

Handwritten labels at the top left: f3-3+, 3-4, 2-3+, 3-1, 2-4+, 2-4.

Handwritten labels at the top center: 4-4, 3-4, 4-2, 3-2, 4-2-1, 3-2, 4-2-2.

Handwritten label at the top right: 11-4.

Large handwritten label: 51-1

Large handwritten label: 51-2

Handwritten label: 23-1

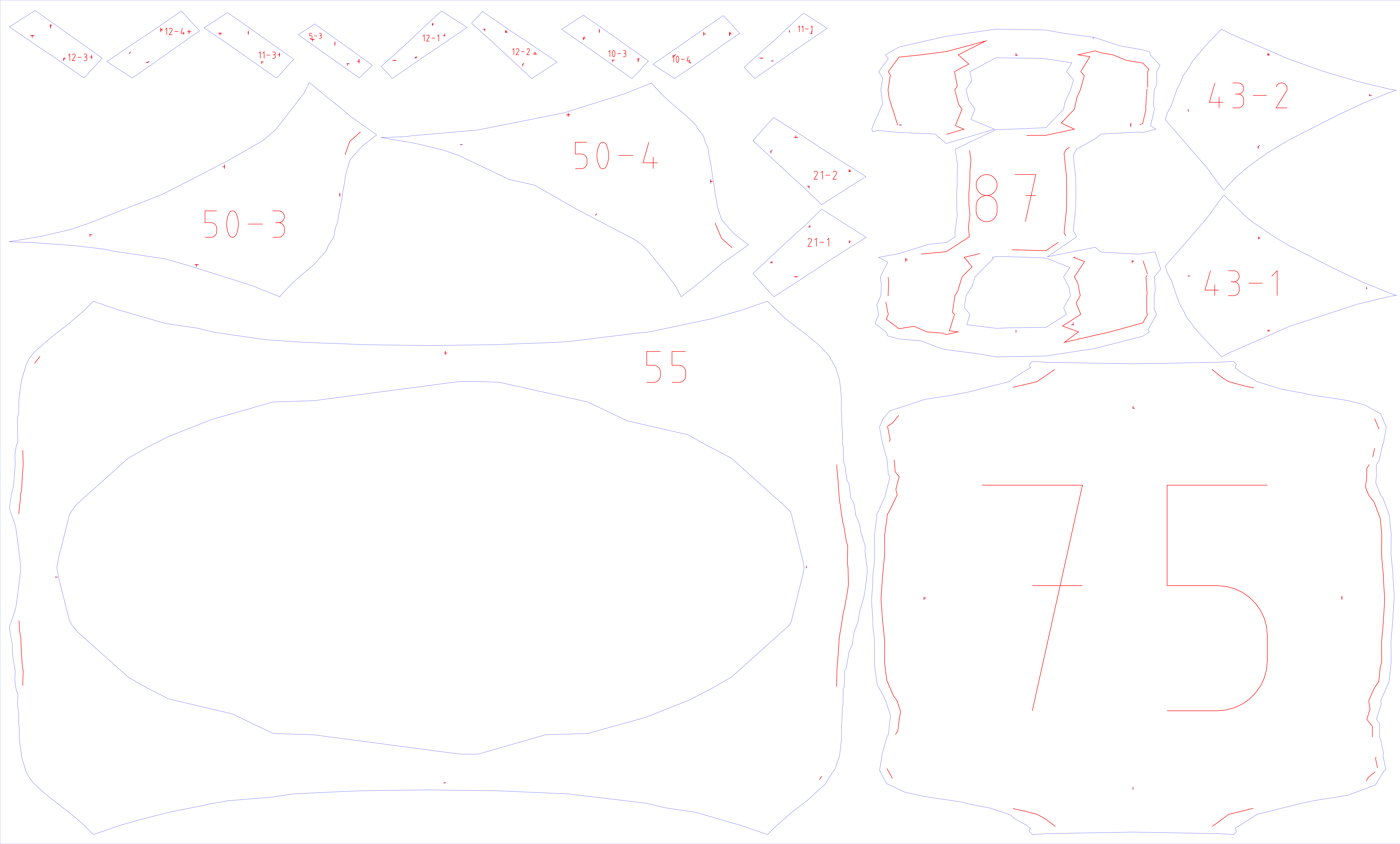
Handwritten label: 89-2

Large handwritten label: 54

Handwritten label: 818

Handwritten labels on the right side of the 818 page: 7-2, 7-1, 6-4, 6-3, 9-2, 9-1.

Handwritten label: 78



$14-3$ $14-4$ $13-3$

$37-4$

$35-3$

$35-4$

$33-1$

$88-1$

$50-1$

$41-1$

$50-2$

$11-2$ $9-3$ $39-1$

56

7 4

$21-3$

$21-4$

$9-4$

$20-3$

$20-4$

$19-3$

$88-3$

$38-4$

$88-2$

$44-1$

$49-3$

$49-4$

$22-1$

$23-2$

$49-1$

$45-1$

57

73

$23-3$

$22-3$

$89-5$

$26-4$

$25-3$

$25-4$

$16-3$

$89-4$

$39-3$

$16-1$

$42-3$

$49-2$

$48-3$

$30-1$

$48-4$

$46-1$

58

7

2

$27-3$

$26-3$

$27-4$

$27-1$

$35-2$

$40-3$

$40-4$

$48-1$

$48-2$

$35-1$

$47-3$

$47-1$

59

71

$31-4$

$25-1$

$31-3$

$19-1$

$3\bar{6}-2$

$43-3$

$43-4$

$89-1$

$89-3$

$4-1$

$47-4$

$47-2$

$3\bar{6}-1$

$4\bar{6}-3$

$4\bar{6}-4$

$\bar{6}0$

76

$7-4$

$17-2$

$17-1$

$16-4$

$18-2$

$18-1$

$$34 - 3$$

$$4 - 3$$
$$5 - 4$$

$$36 - 3$$

$$40 - 2$$

$$42 - 4$$

$$44 - 4$$

$$7 - 3$$

$$10 - 2$$

$$46 - 2$$

$$45 - 3$$

$$40 - 1$$

$$45 - 4$$

$$44 - 3$$

61

70

$37-3$

$38-3$

$41-4$

$32-3$

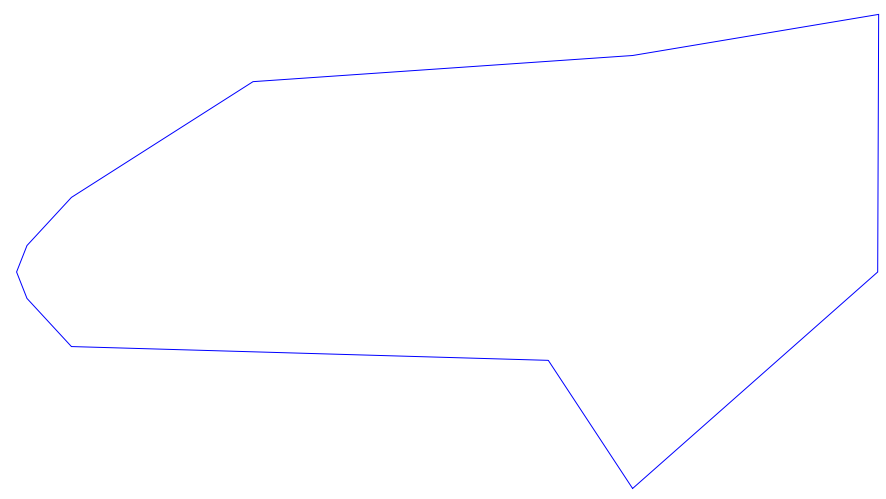
$45-2$

$44-2$

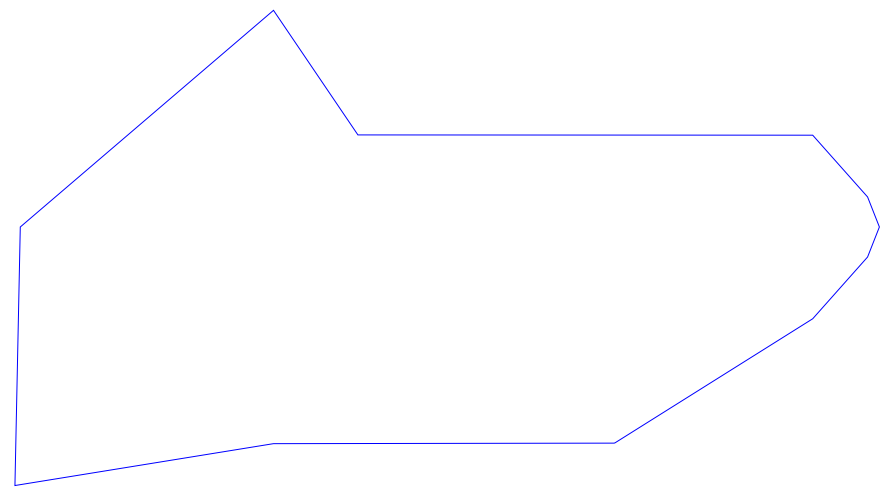
$41-3$

$38-2$

$38-1$



6 2



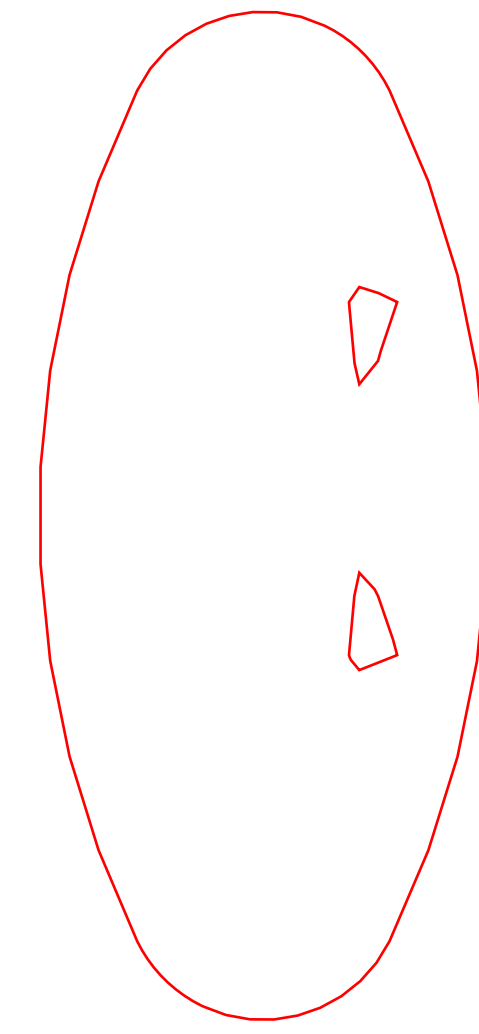
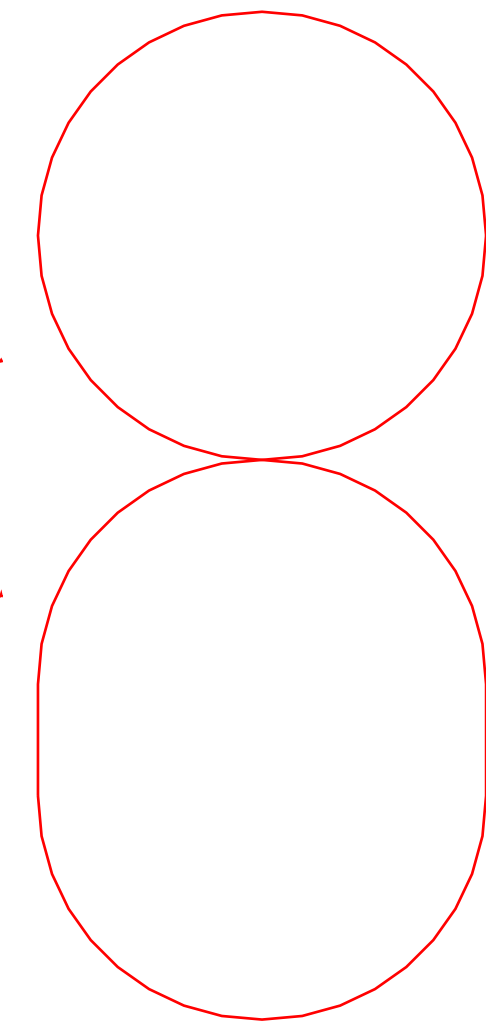
7

9

$33-4$

$33-3$

$34-4$



7

9

$41-2$

$39-4$

$36-4$

$+8-4$

$19-4$

$22-4$

$24-2$

$37-2$

$33-2$

$32-1$

$24-1$

$42-1$

$42-2$

$39-2$

$37-1$

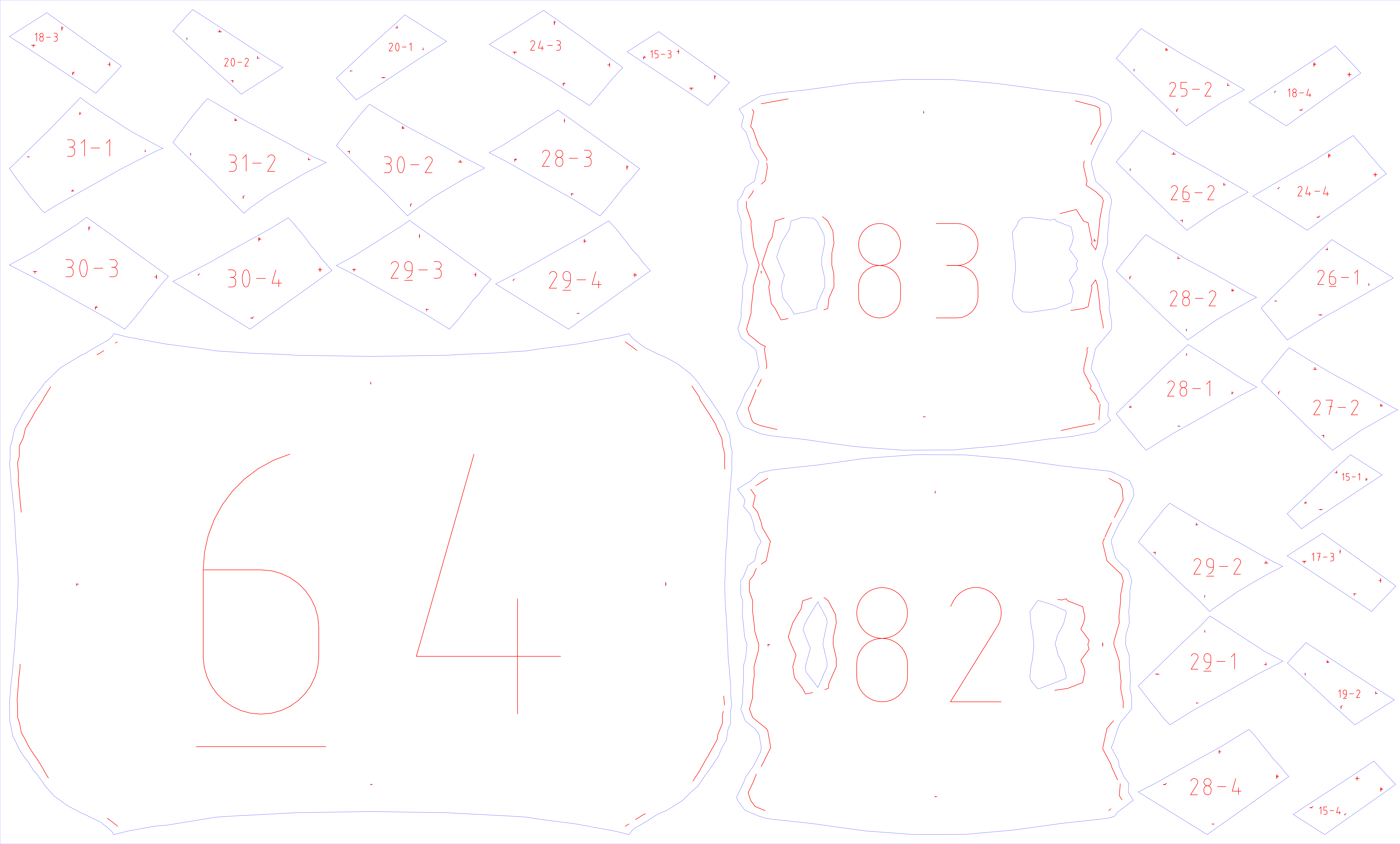
$32-4$

$32-2$

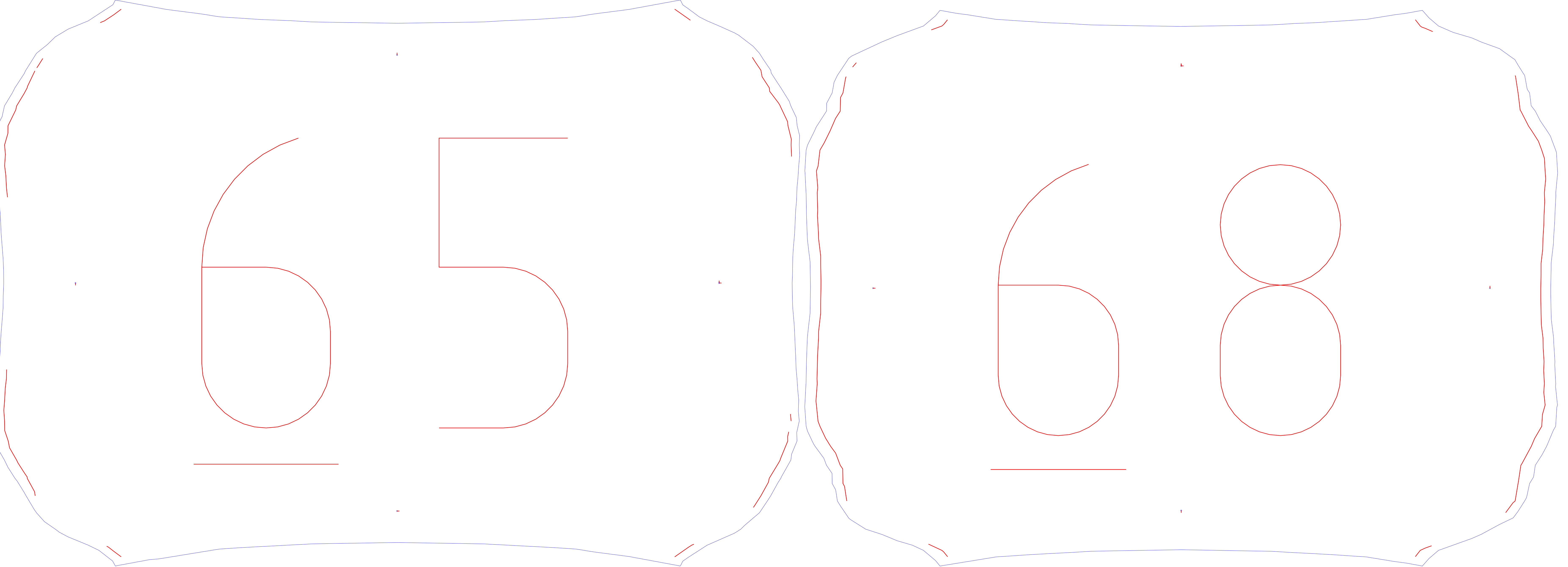
$22-2$

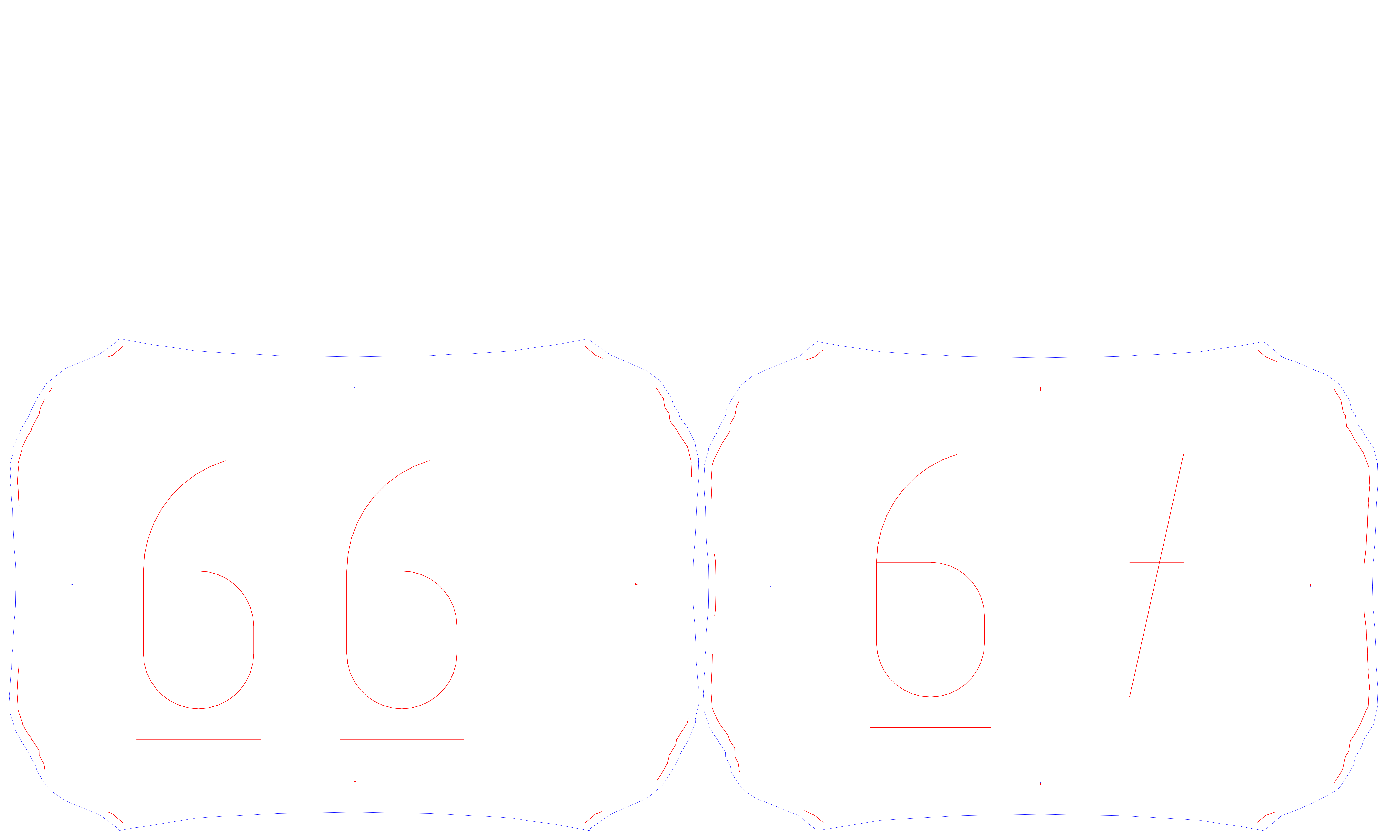
63

69



- 13-4
13-2
15-2
13-1
16-2
14-2
17-4
14-1





A hand-drawn diagram consisting of two overlapping, roughly rectangular shapes. The top shape is labeled '52-2' and the bottom shape is labeled '52-1'. Both labels are written in red ink. The shapes are outlined in blue ink. The top shape has a small red tick mark on its right side. The bottom shape has a small red tick mark on its right side. The two shapes overlap in the center, with the top shape's bottom edge and the bottom shape's top edge meeting in the middle. There are also small red tick marks on the top and bottom edges of both shapes, near the center of their respective horizontal spans.

52-2

52-1

