



**FABRICADEMY**  
textile and technology academy



**waag**  
textilelab amsterdam



keeping time



*TEMPORALITY: the state of existing or having a relationship with time.*

what?

3

kinetic and interactive sculptures.

natural cycles.

characters.





↖ blooming  
& seed  
cycles.



daphne.



migratory cycles  
& birds ↘



philomel.

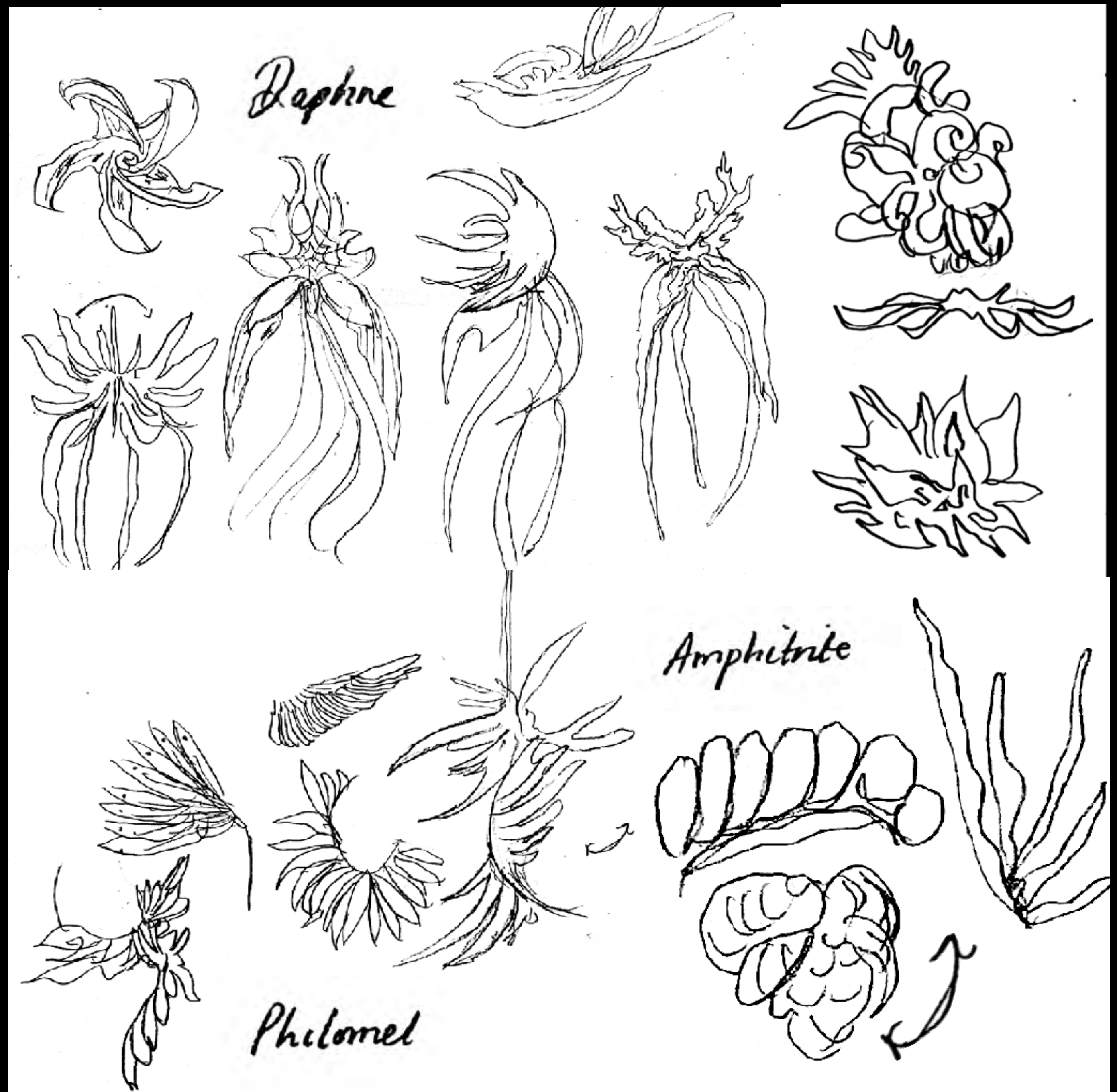
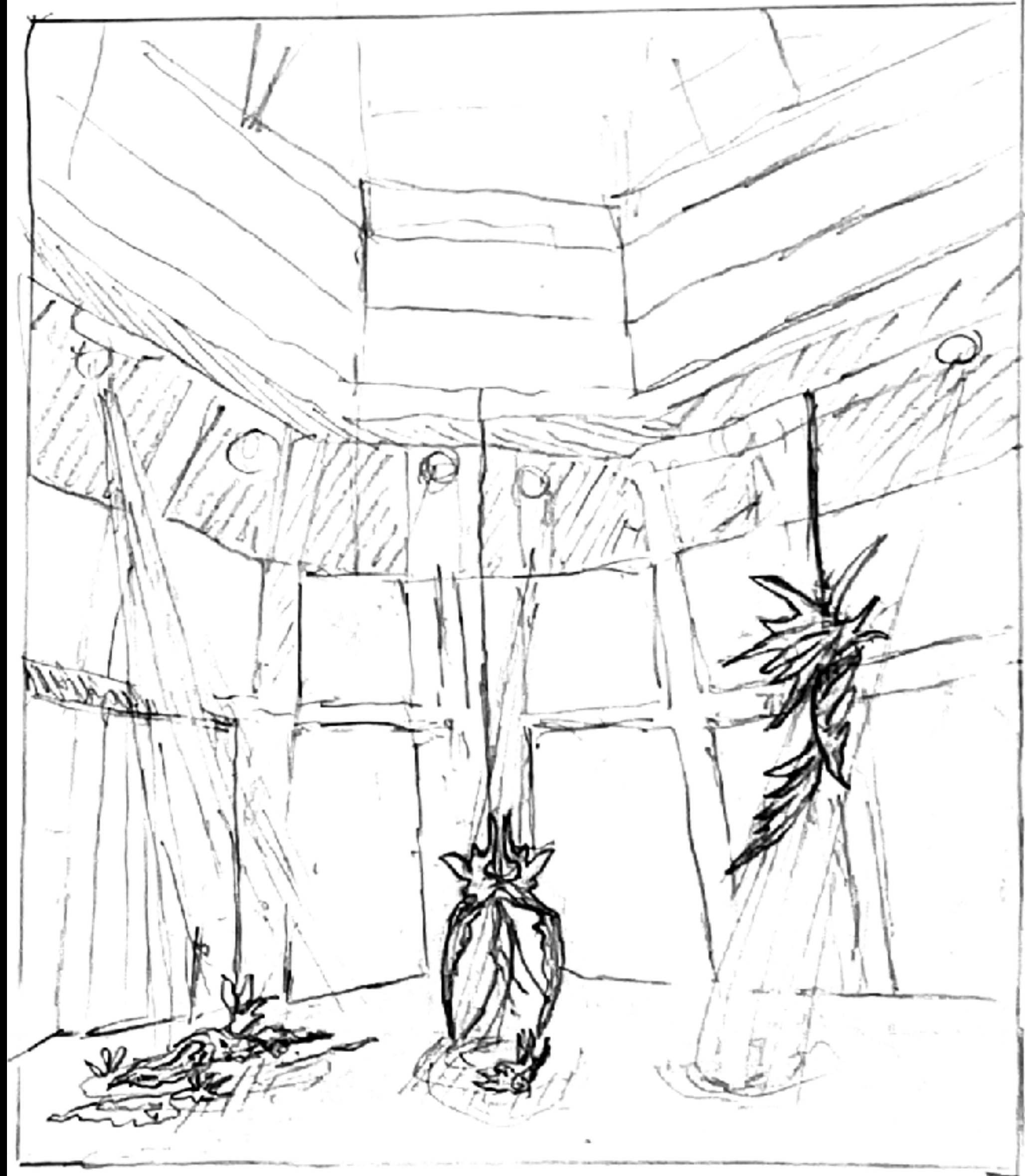
↗ growth cycles  
in waterfall  
ecosystems



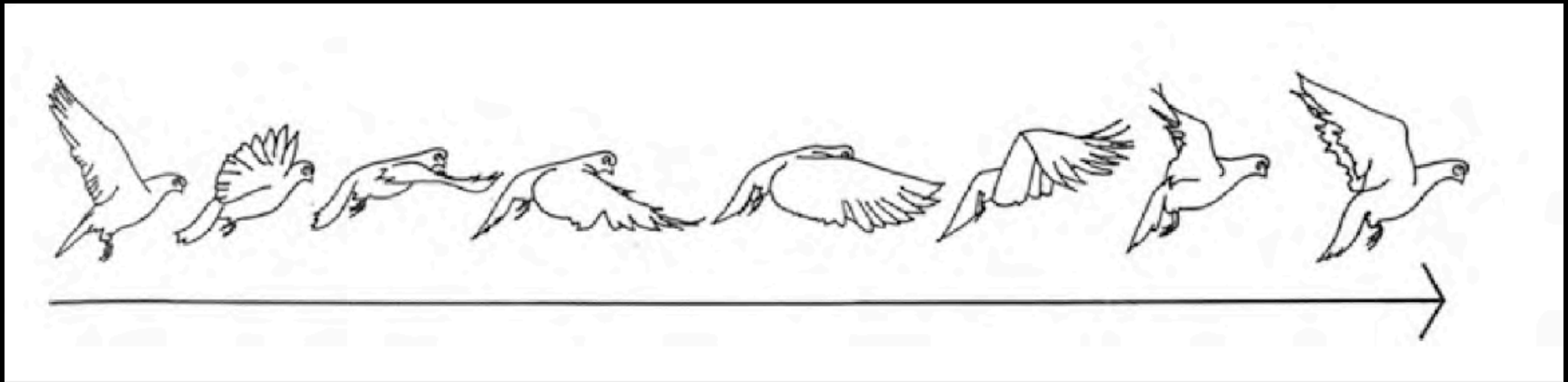
amphitrite.



initial sketches.





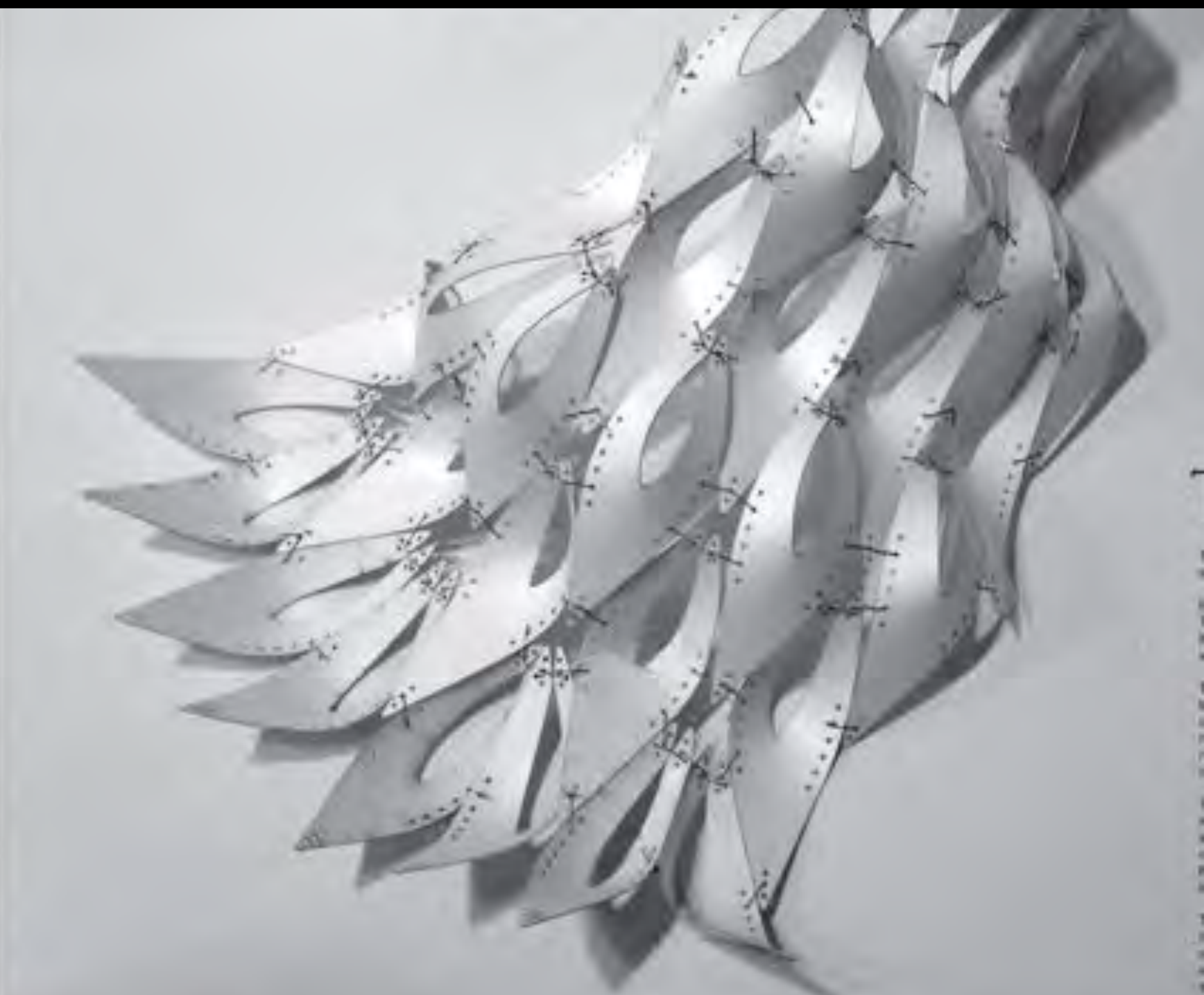


Overlapping geometries are organized through a pre-determined superposition of parallel planes, which are in most cases identical copies of one basic shape (Fig. 27).

Example	1. Scorpionfly (or. <i>Mecoptera</i> ) can reduce the length of its bosom by sliding the segments it is divided into under one another, like a monoclar
---------	---



Wing span & speed.  
Overlapping & bending

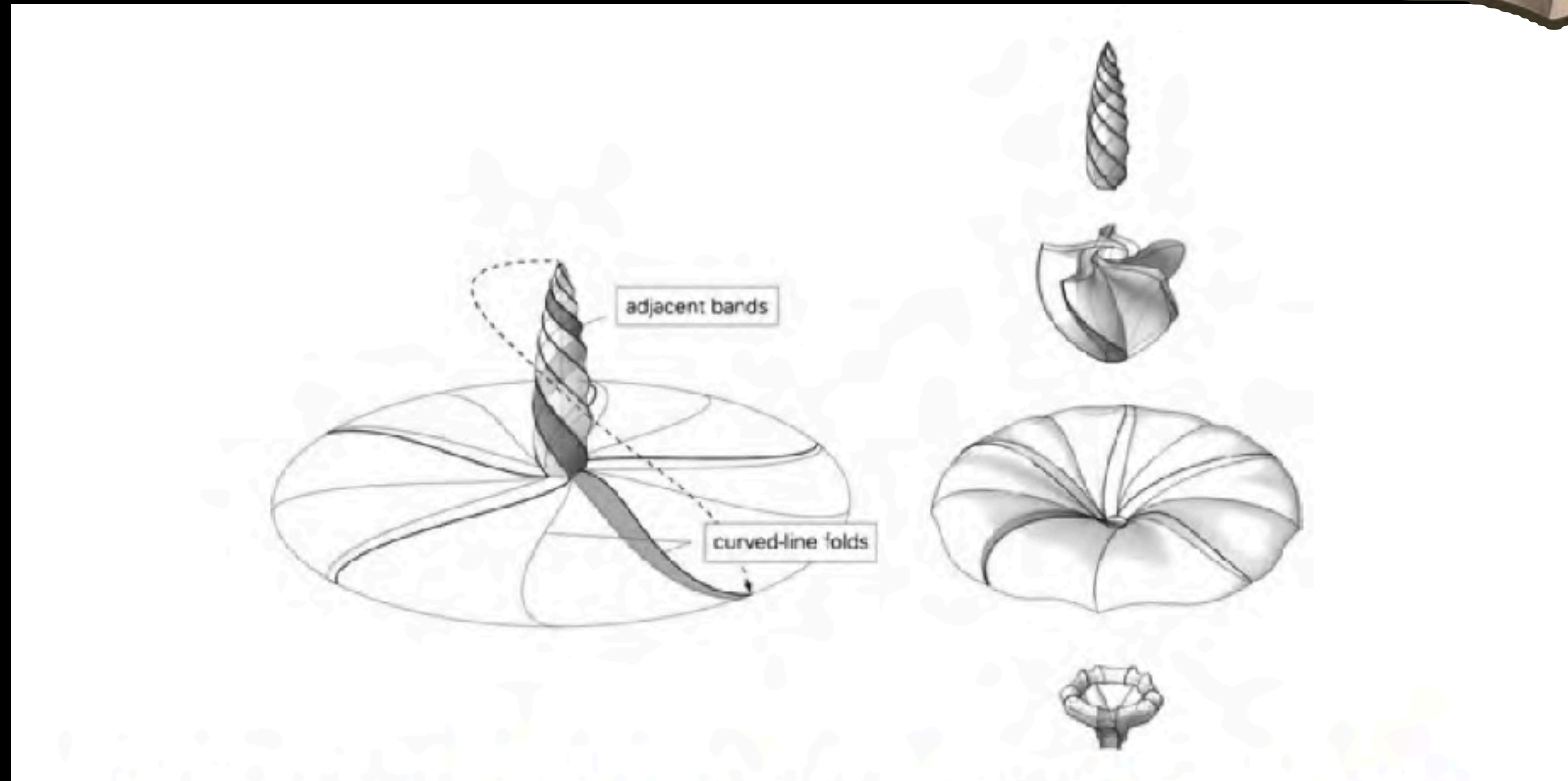
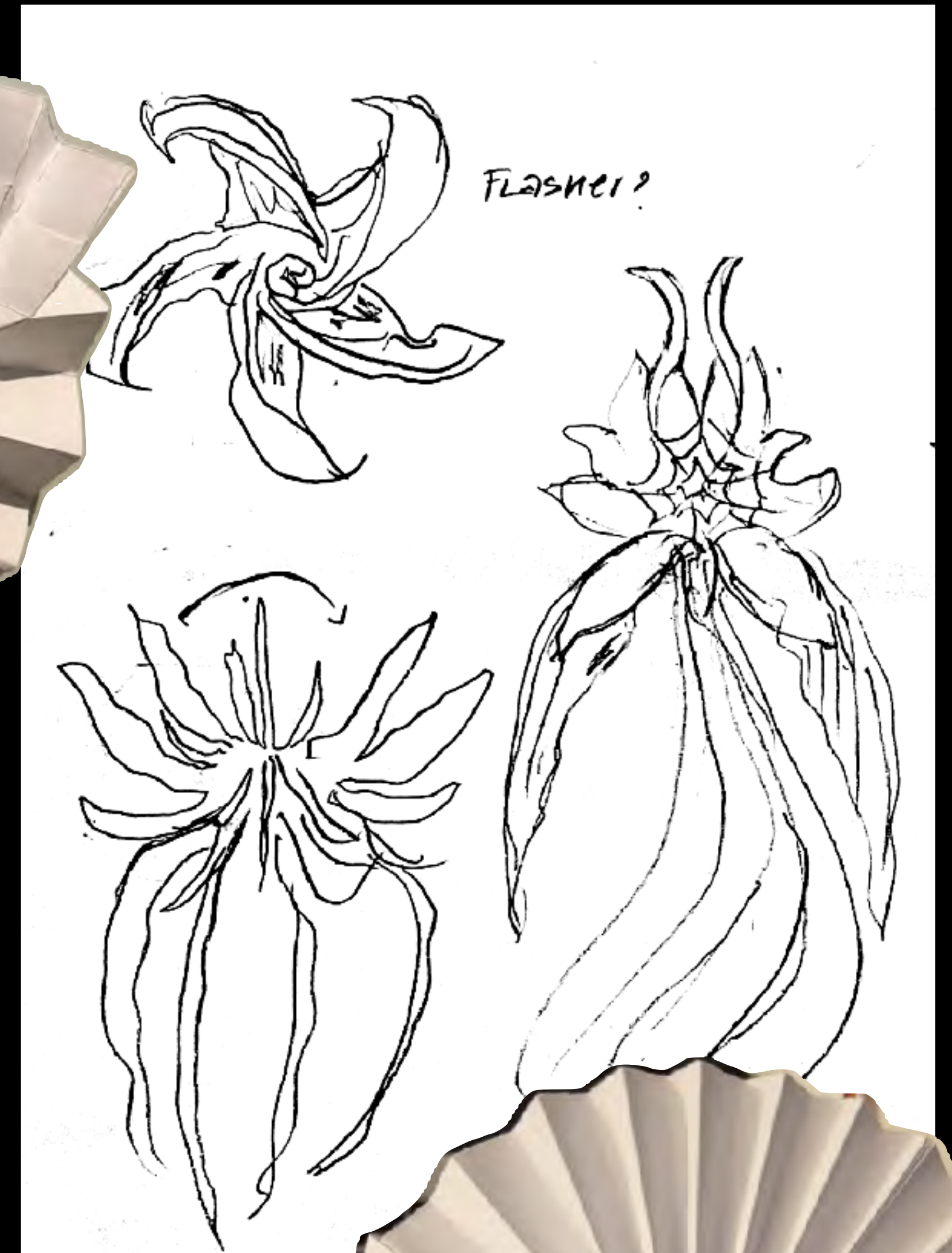


Wearable  
philomel.





Seed Catapulting Mechanism



daphne.

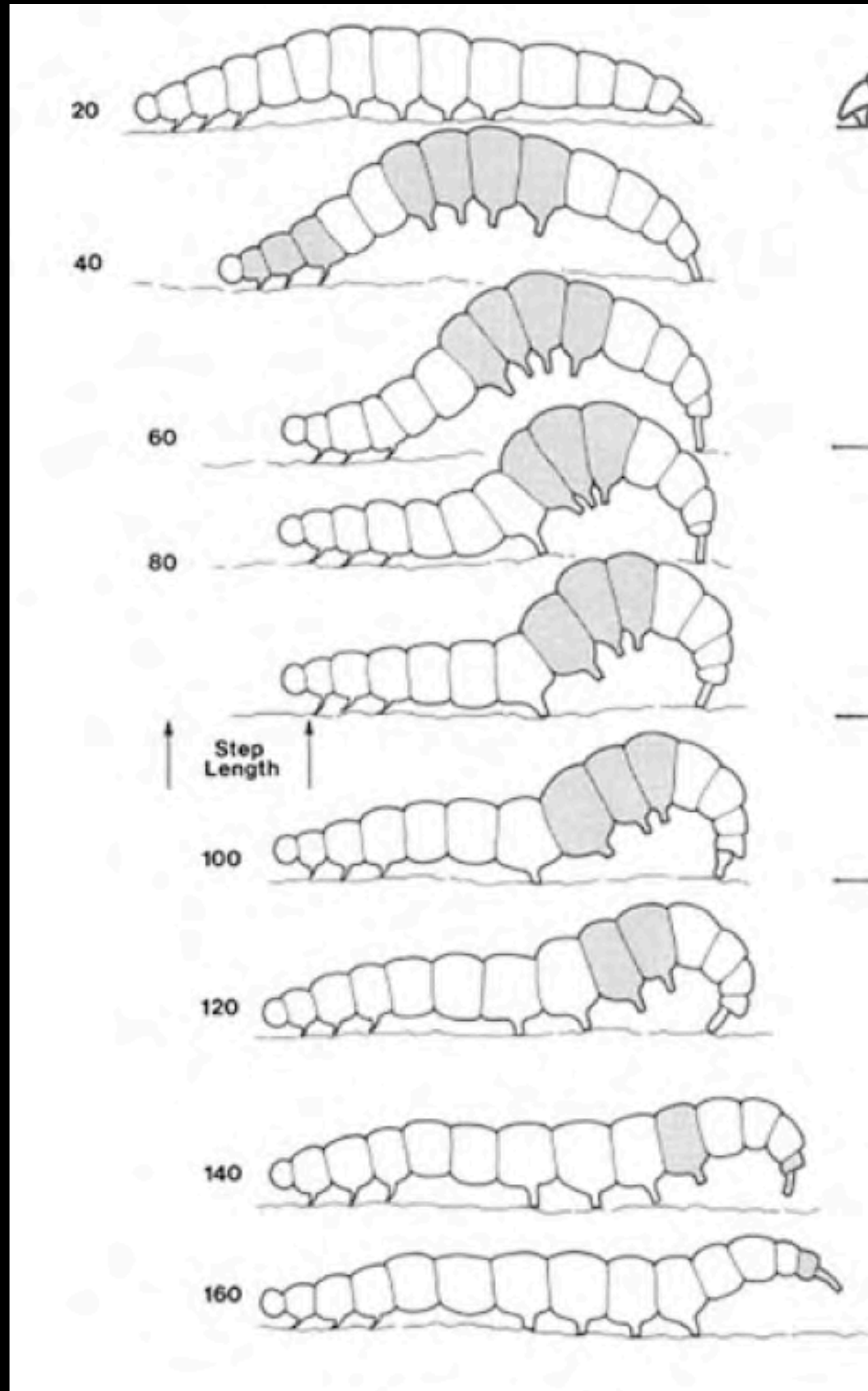
Photonastic opening & closing

Wearables

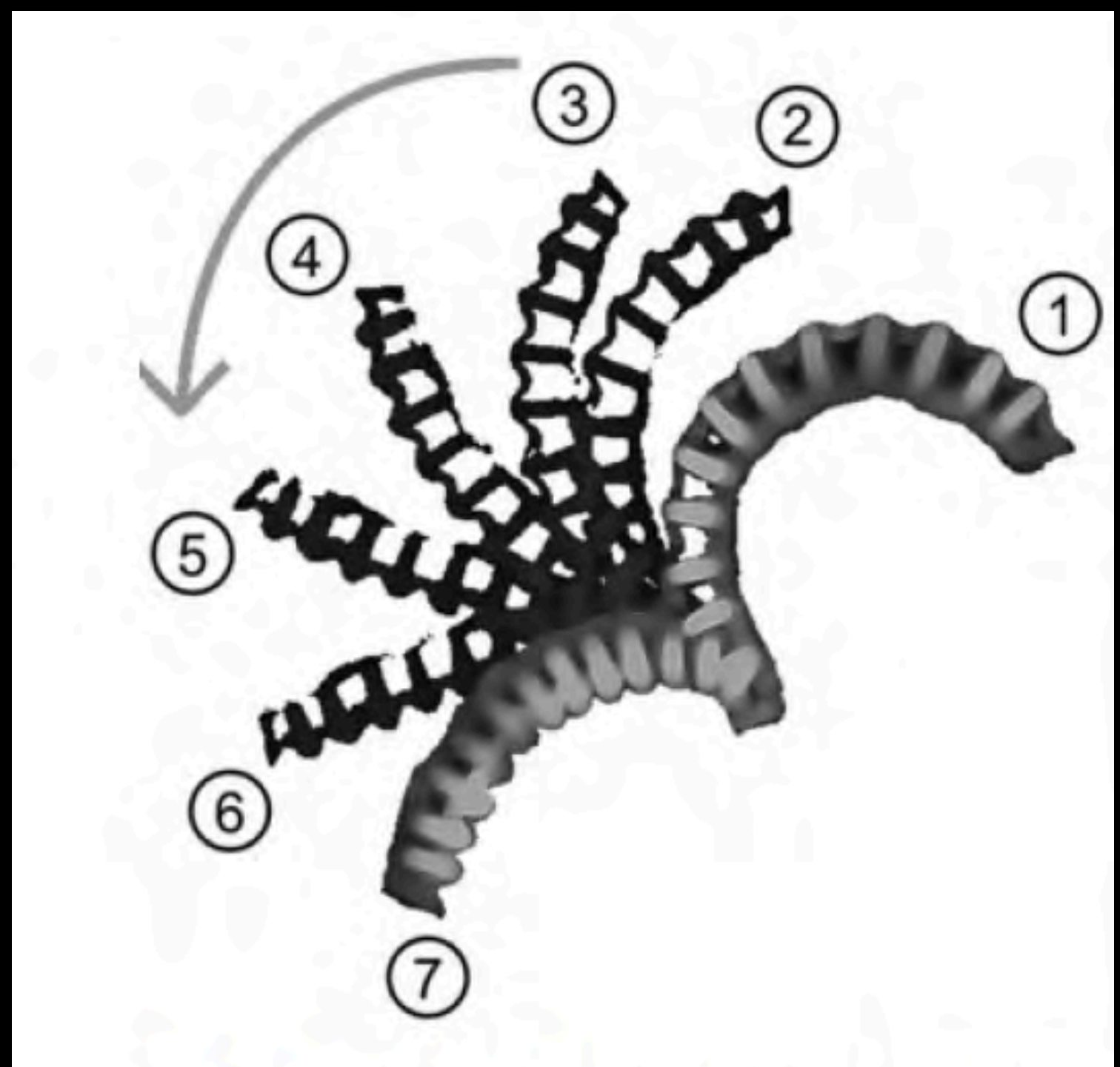




# Softbodied & limbless locomotion



Grippers, concertina, inching



amphitrite.

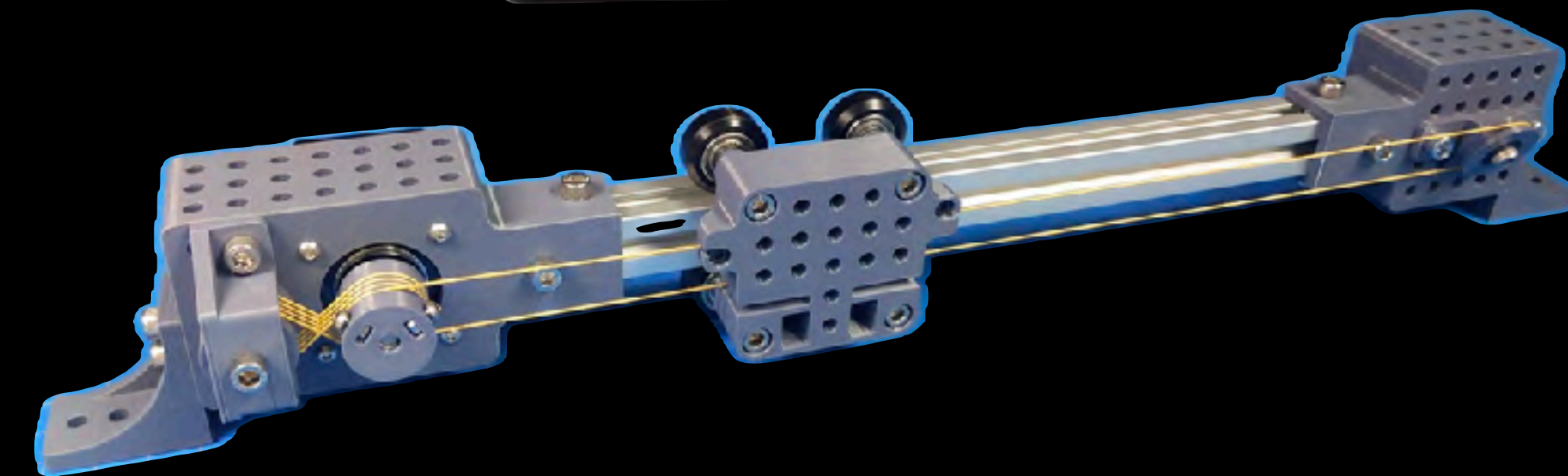
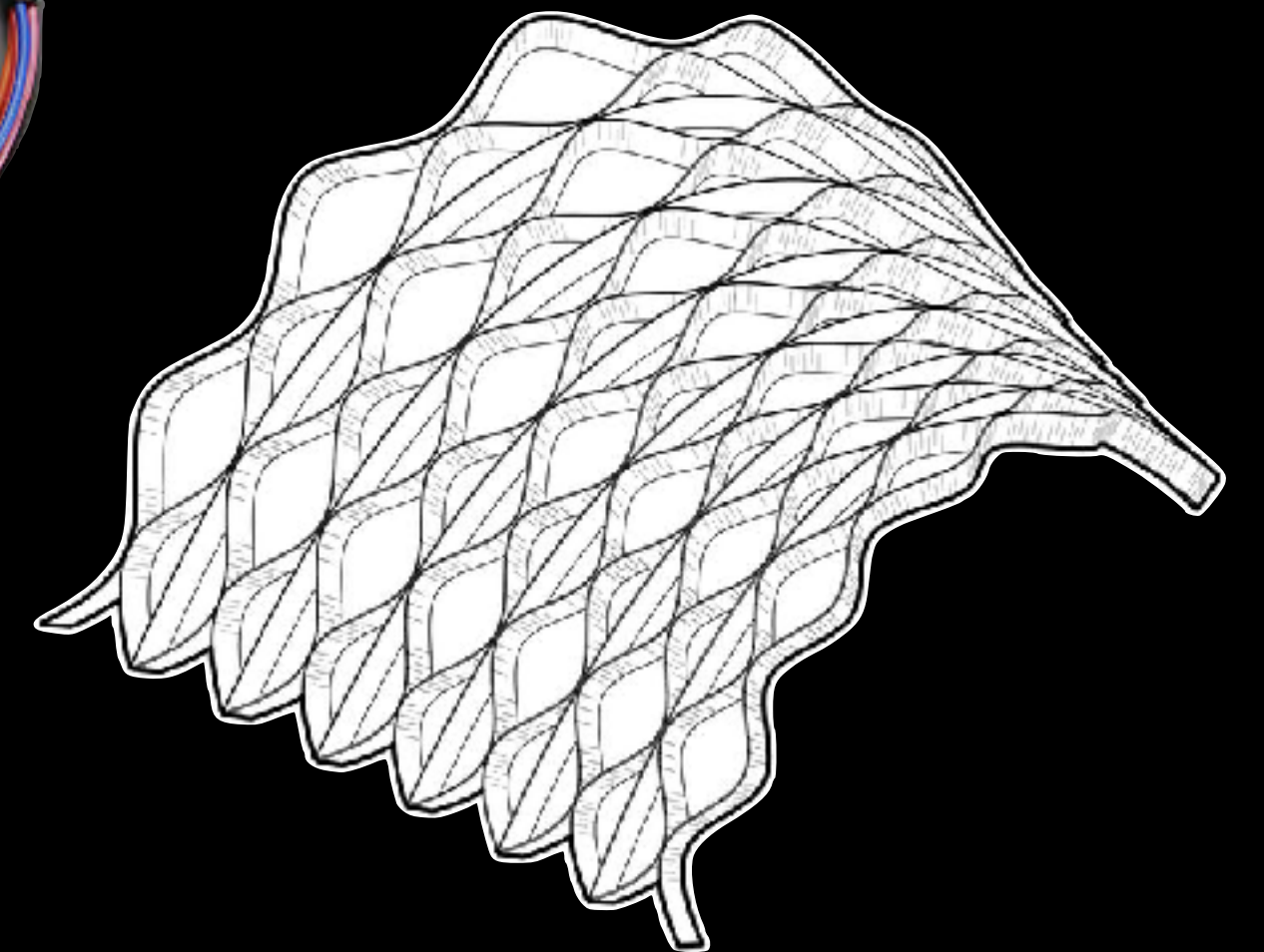
how?



methods and process.

soft robotics.

electronics.



open source hardware.

parametric design  
and lasercutting.

when?



December 19<sup>th</sup> - January 14<sup>th</sup>: DESIGN MOTION

- Research Biomimetic Motion and simple mechanics.
- Paper and fabric prototyping
- Test Fabric pleating techniques and processes.
- Decide and limit types of Motions
- Draw a first schematic for each sculpture (define scale and dimensions)
- Electronics Planning and sketching - Research components/ first bill of materials.

February 14<sup>th</sup> - March 14<sup>th</sup>: AESTHETIC + INSTALL

- Finalised Design- make scale model
- Work on the Electronic Actuation of motion.
- 3D printing attachments and hardware
- Develop Proximity Sensor systems and code
- Refine range of sensor to work in install space.

- Aesthetic and Material Refinement
- Using parametric design, 3D printing and laser cutter to make movement more dramatic.
- Perfecting Hard soft connections.
- Developing and dry running install- trouble shooting suspension of sculptures, lights and projection, power sources, hiding mechanics.
- Designing spectator experience.

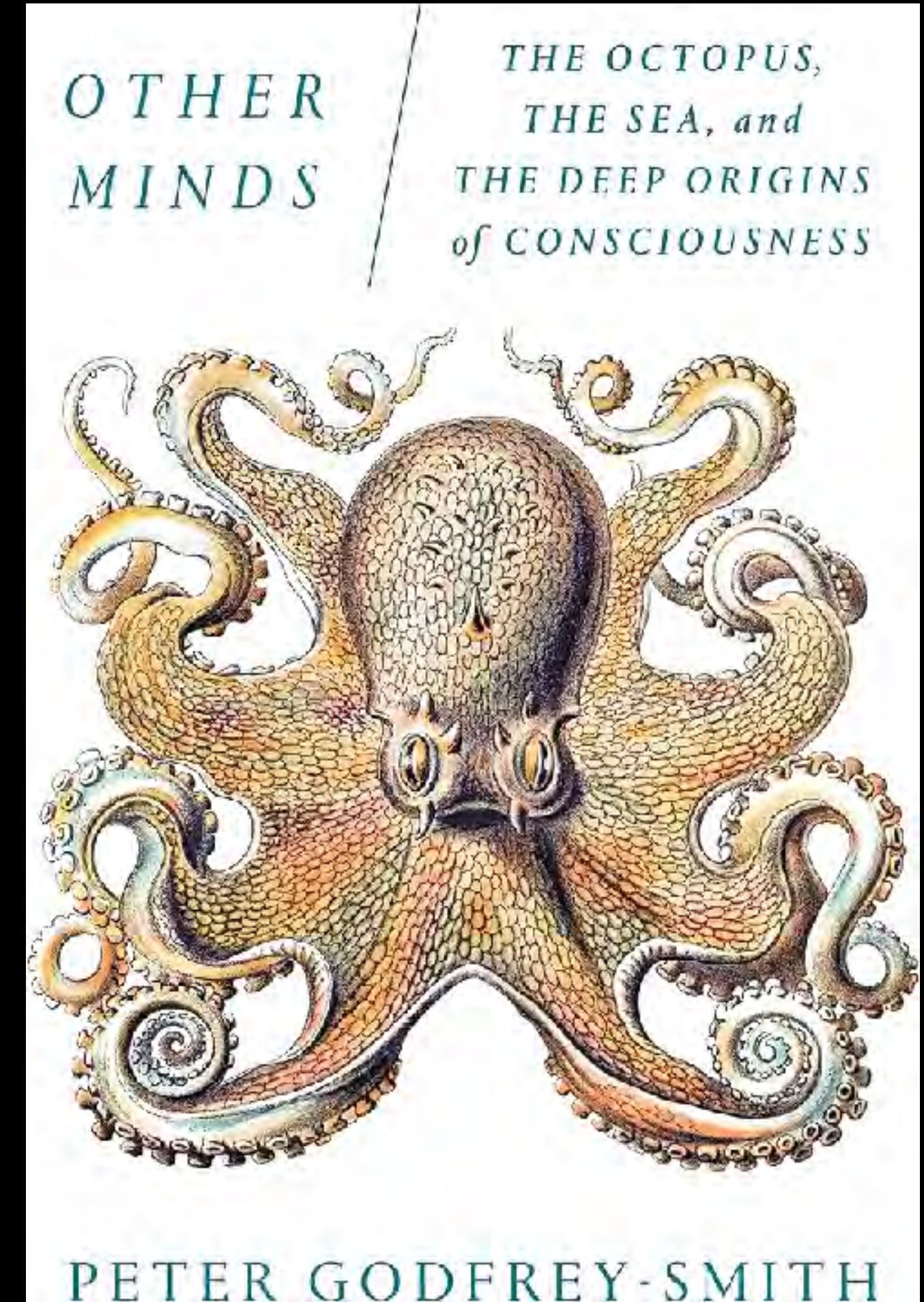
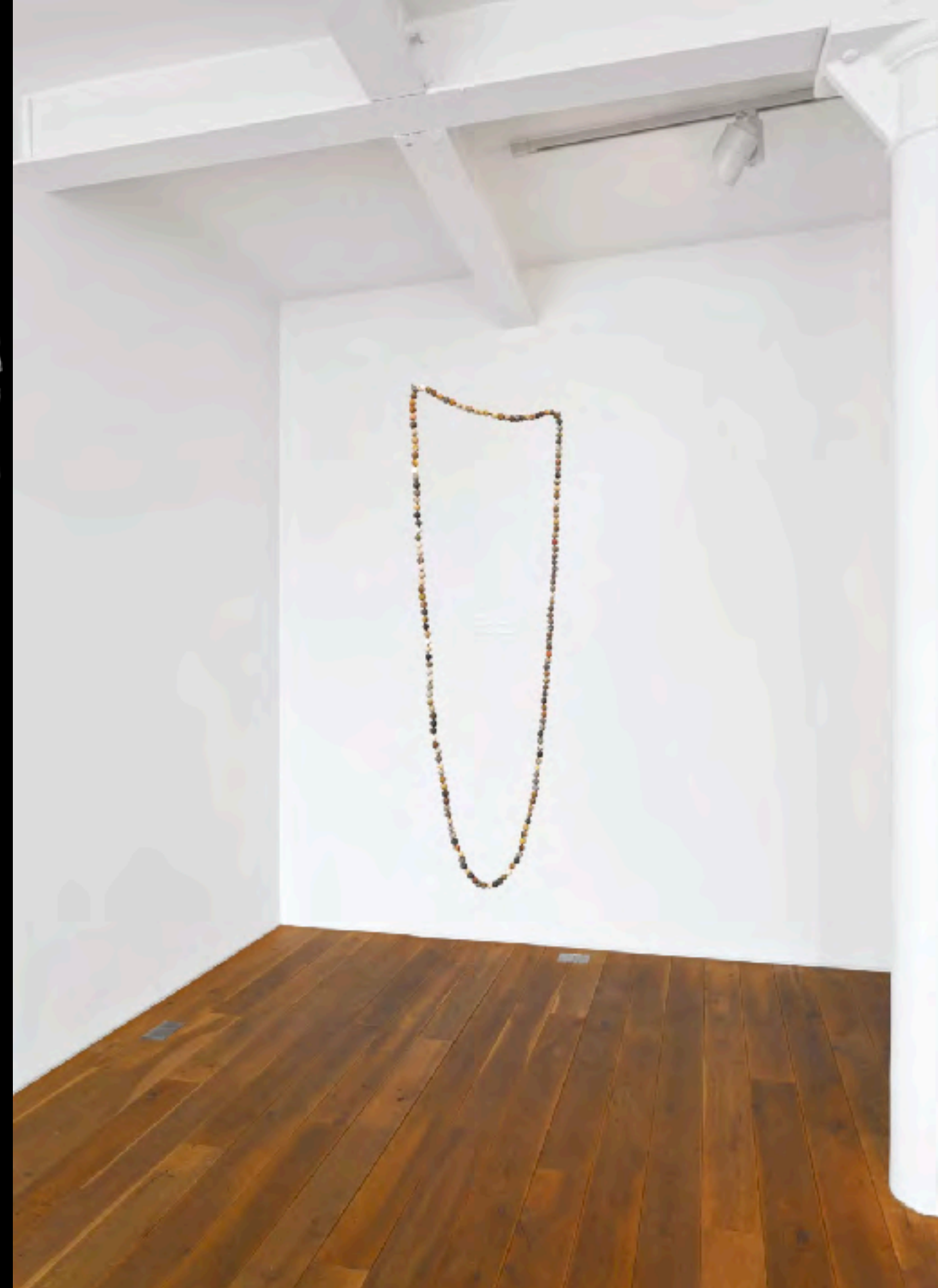
January 14<sup>th</sup> - February 14<sup>th</sup>: ELECTRONICS

context?



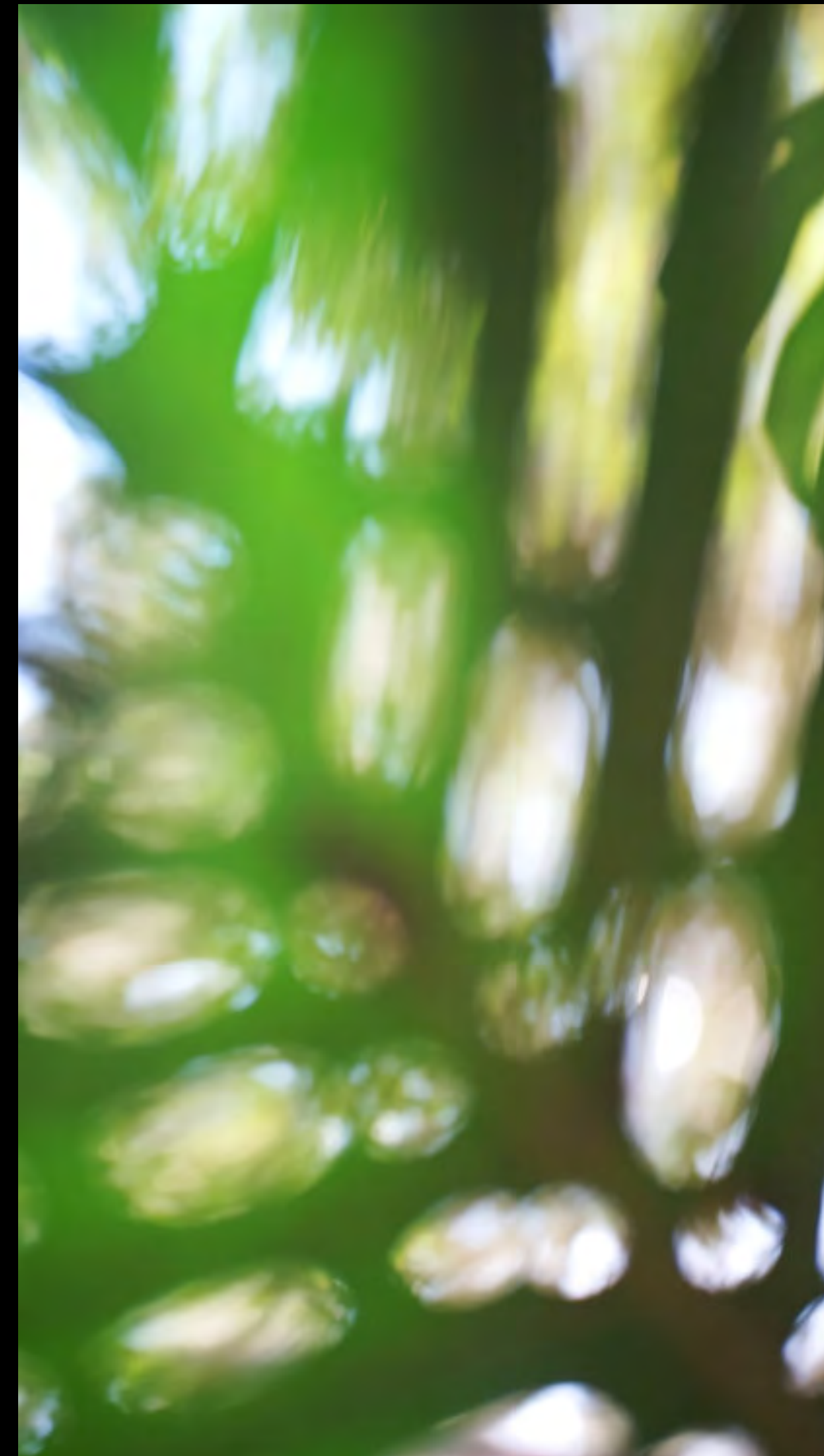
inspiration and research.

Katie Patterson, "There lay the days between" (2022)  
↙ "Fossil Necklace" (2013).



more than human temporality.



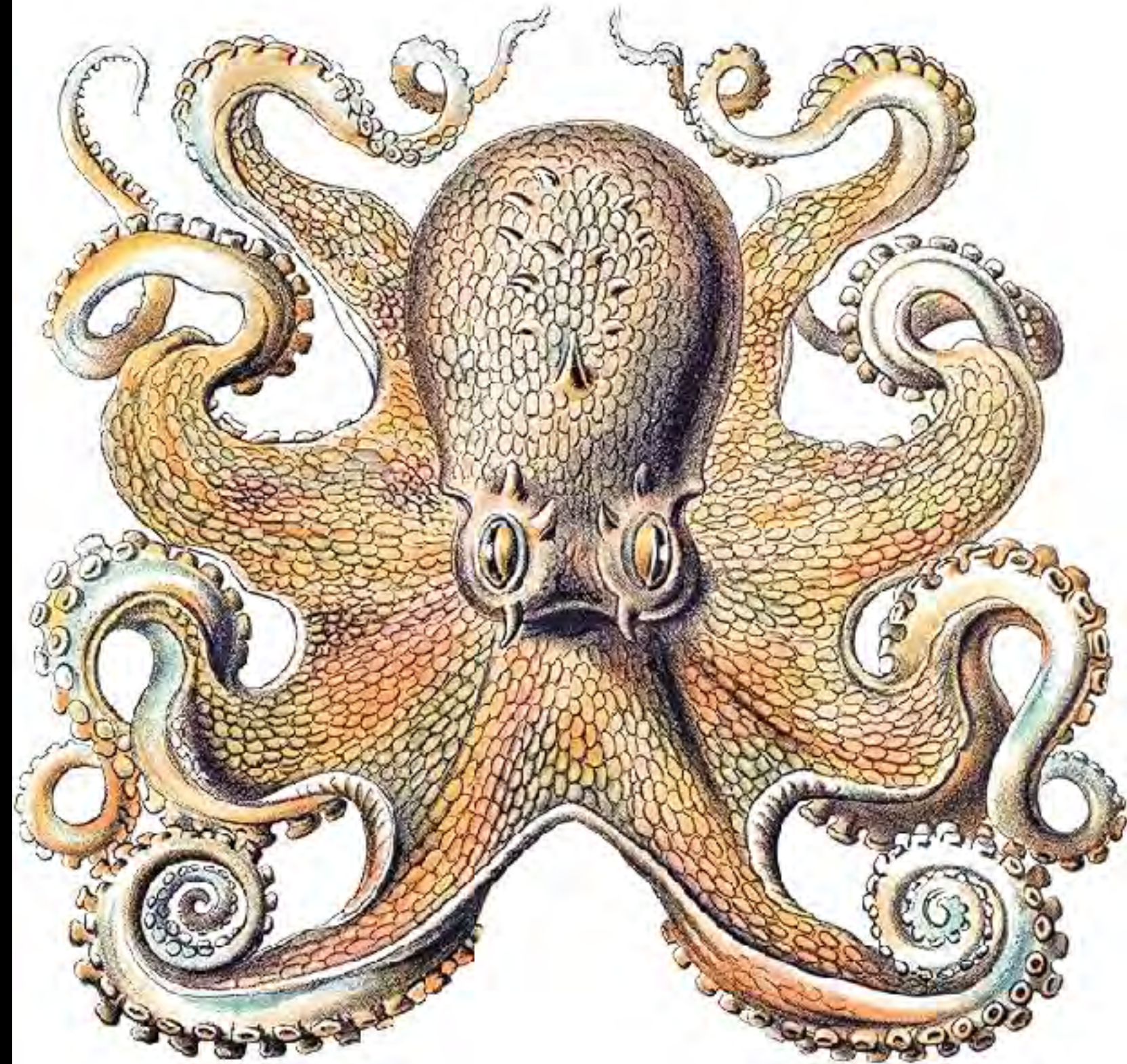


more than human temporality.



# OTHER MINDS

THE OCTOPUS,  
THE SEA, and  
THE DEEP ORIGINS  
of CONSCIOUSNESS

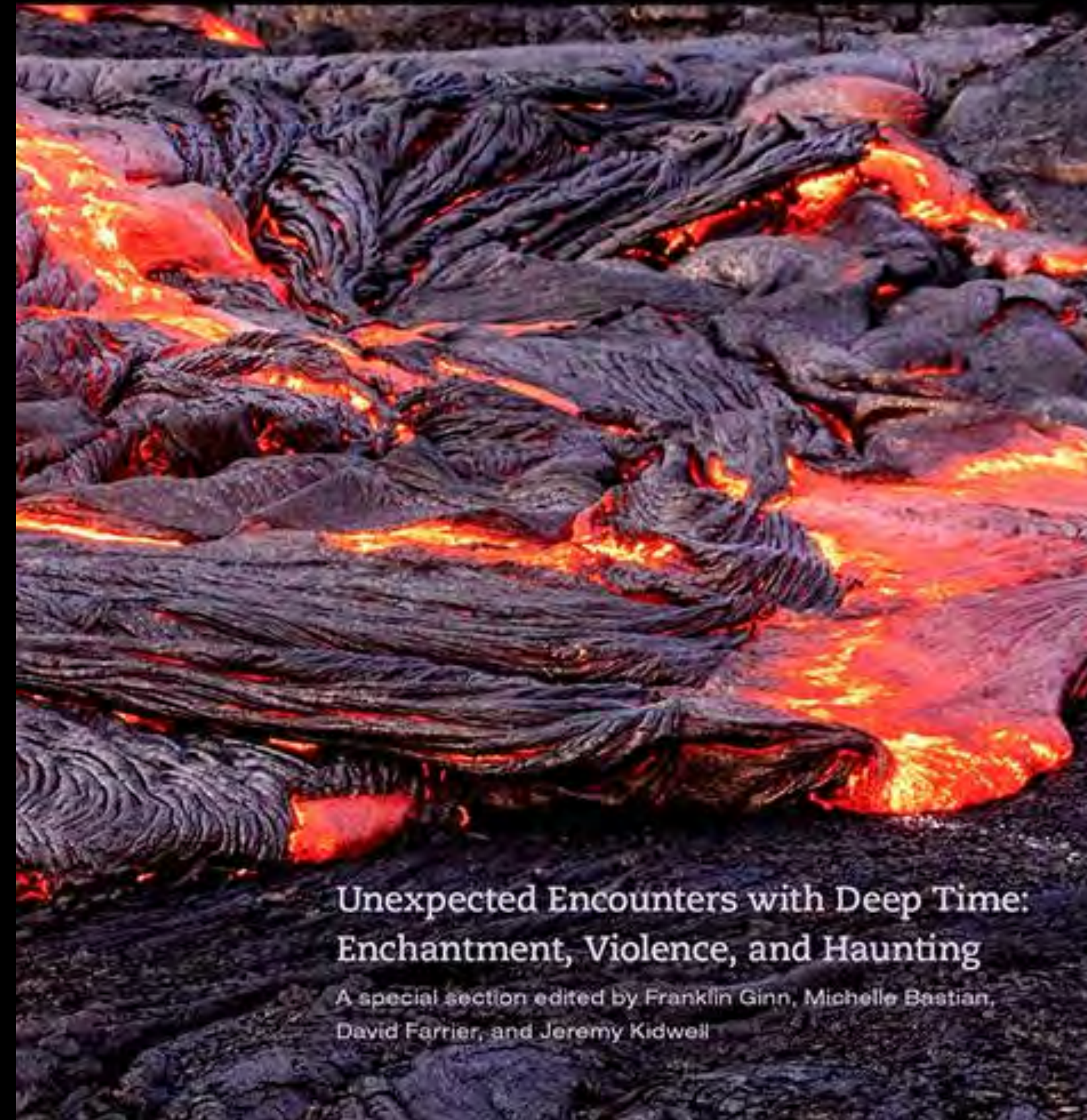


PETER GODFREY-SMITH



ENVIRONMENTAL  
HUMANITIES

Volume 10, Issue 1, May 2018



Unexpected Encounters with Deep Time:  
Enchantment, Violence, and Haunting

A special section edited by Franklin Ginn, Michelle Bastian,  
David Farrier, and Jeremy Kidwell

## 4 A Sense of Time

Listen now

second feel the same for a fly, a bird, or a swordfish, as it does  
' Geoff Marsh drills into the science of time perception within  
between species.

more

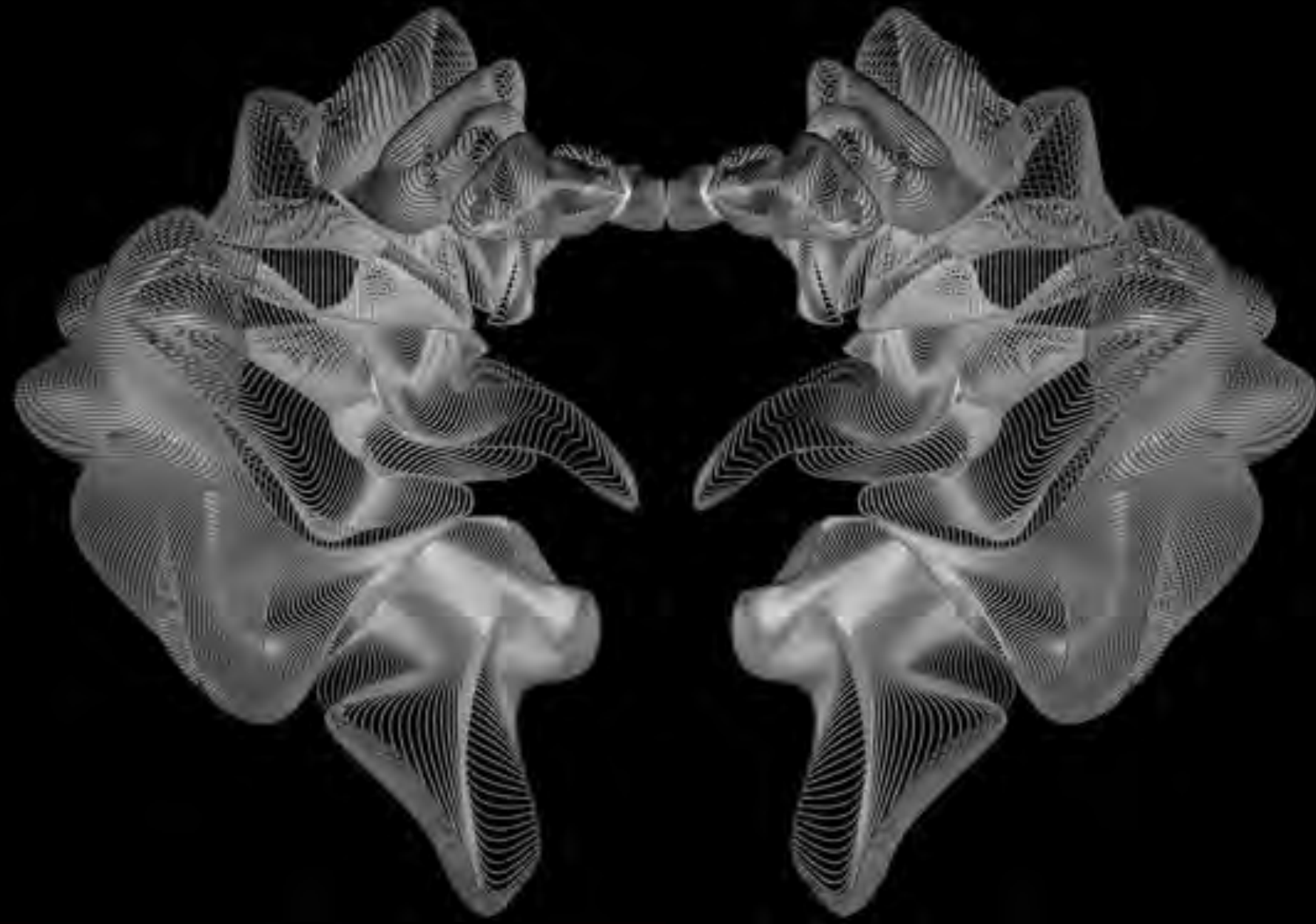
more than human temporality.





speculative fictioning.



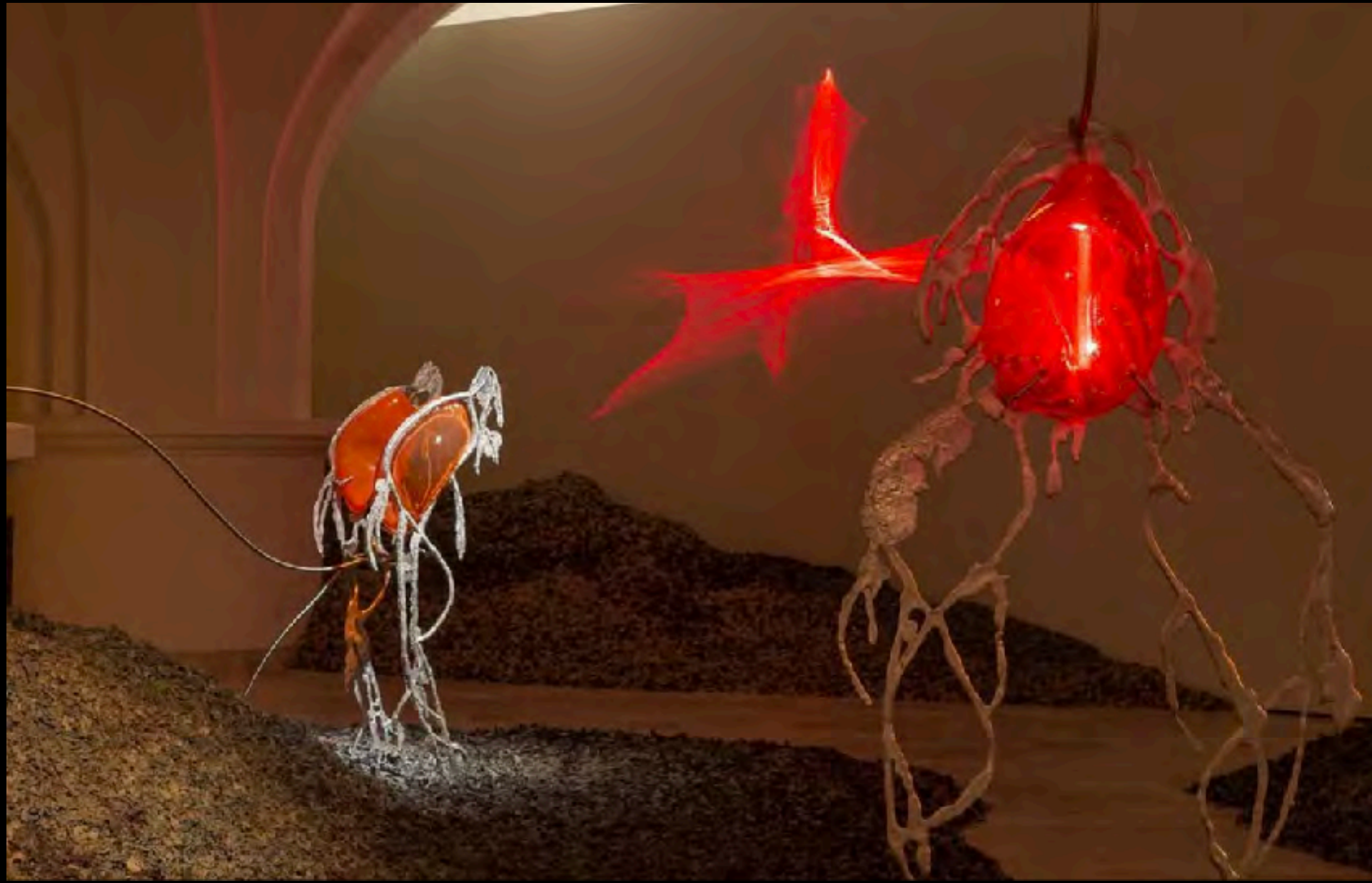


process.



inspiration and research.

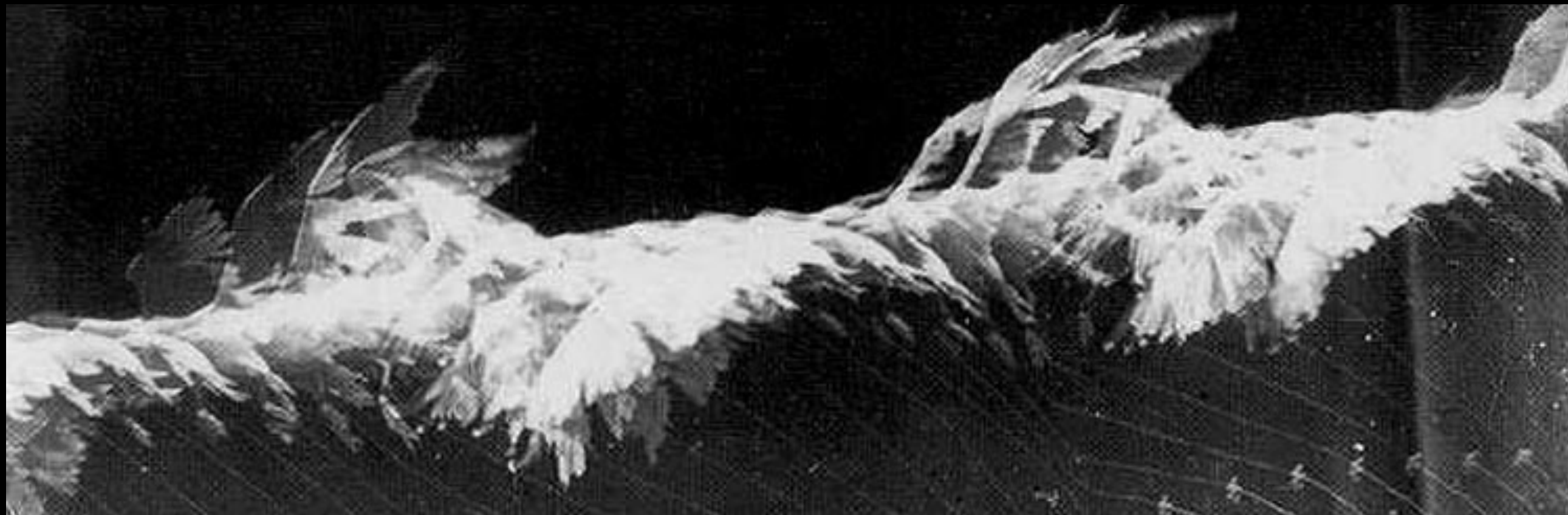
*Left to Right : Pakui Hardware, La Biennale di Venezia (2024),  
Marquerite Humeau, FoxP2 (2016) and Arrivals (2016).*



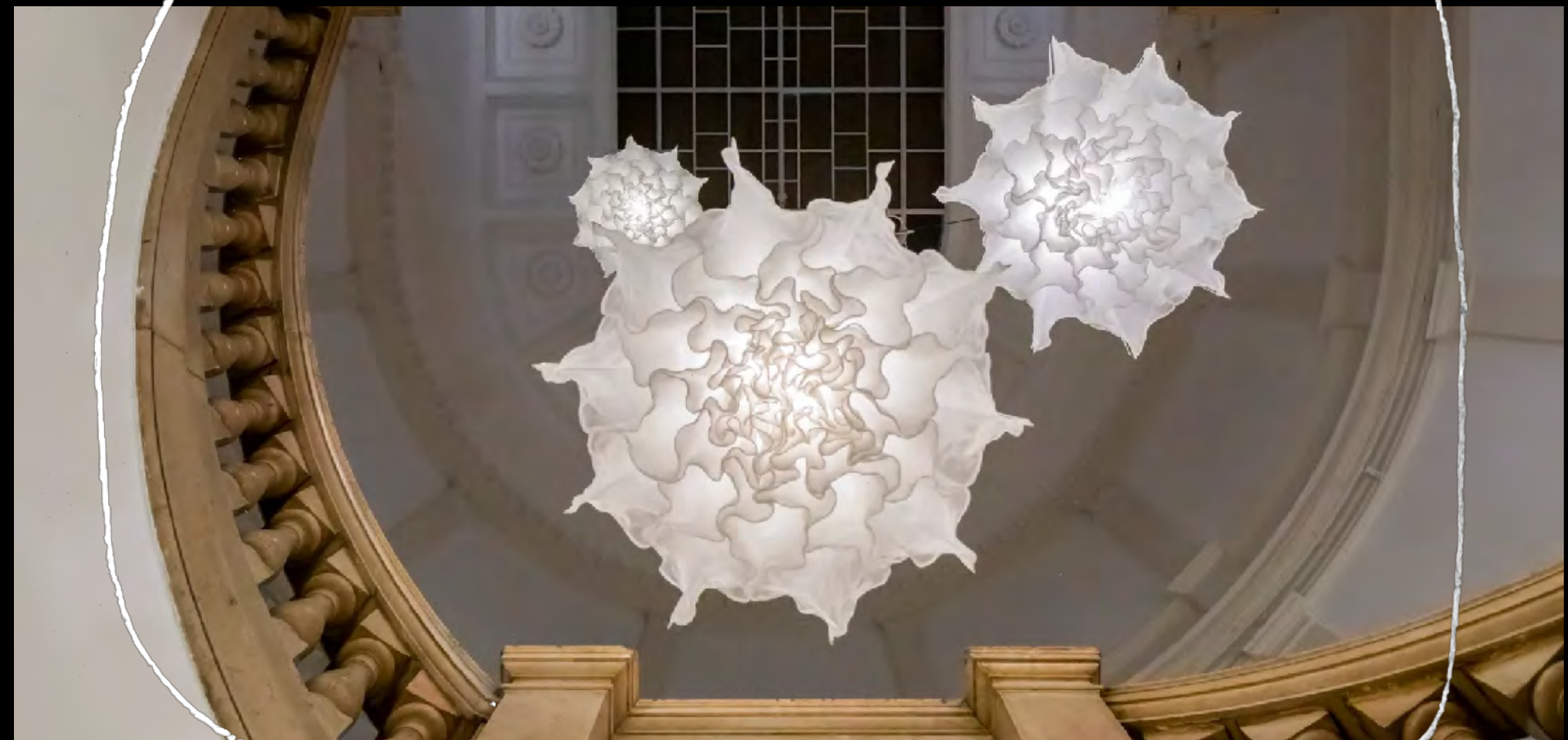
speculative fictioning.



inspiration and research.



Left to Right: Casey Curran, *Parable of Gravity* (2021),  
Theo Jansen, *Strandbeest*, Etienne-Jules Marey, *Flight  
of Gull* (1885), Studio Drift, *Skylights* (2023).



biomimetic movement.





keeping time

