

Midterm - ElectricThreads

Gabríella Kamí Árnadóttir Fabricademy 2024 - 2025



What - Bodysuit

Multi-functional bodysuit: Designed to be worn under cosplay costumes.

Shapewear functionality: Provides a seamless silhouette and enhances the fit and appearance of the costume.

Integrated electronics: Connects directly to the costume, ensuring seamless operation of electronic components.

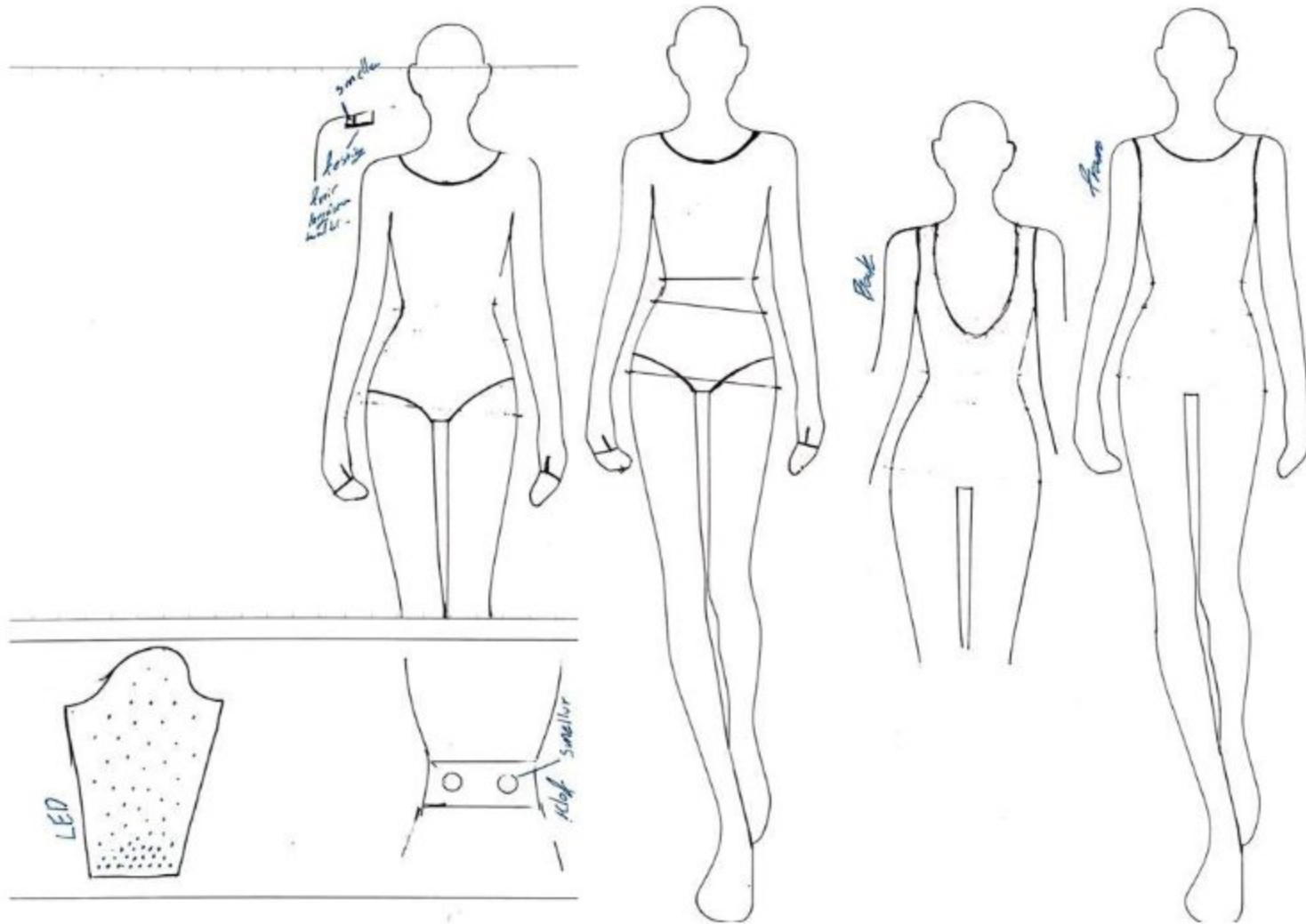
Built-in lights: Strategically placed to add extra flair and vibrancy to the costume.

Battery pack compartment: Includes a secure space to hold the battery pack, powering all electronic components.

Support for wings/backplate: Features a design that accommodates a durable backplate for wings or other large costume accessories.

Enhanced comfort and mobility: Streamlines setup and improves wearability for the user.

Sketches

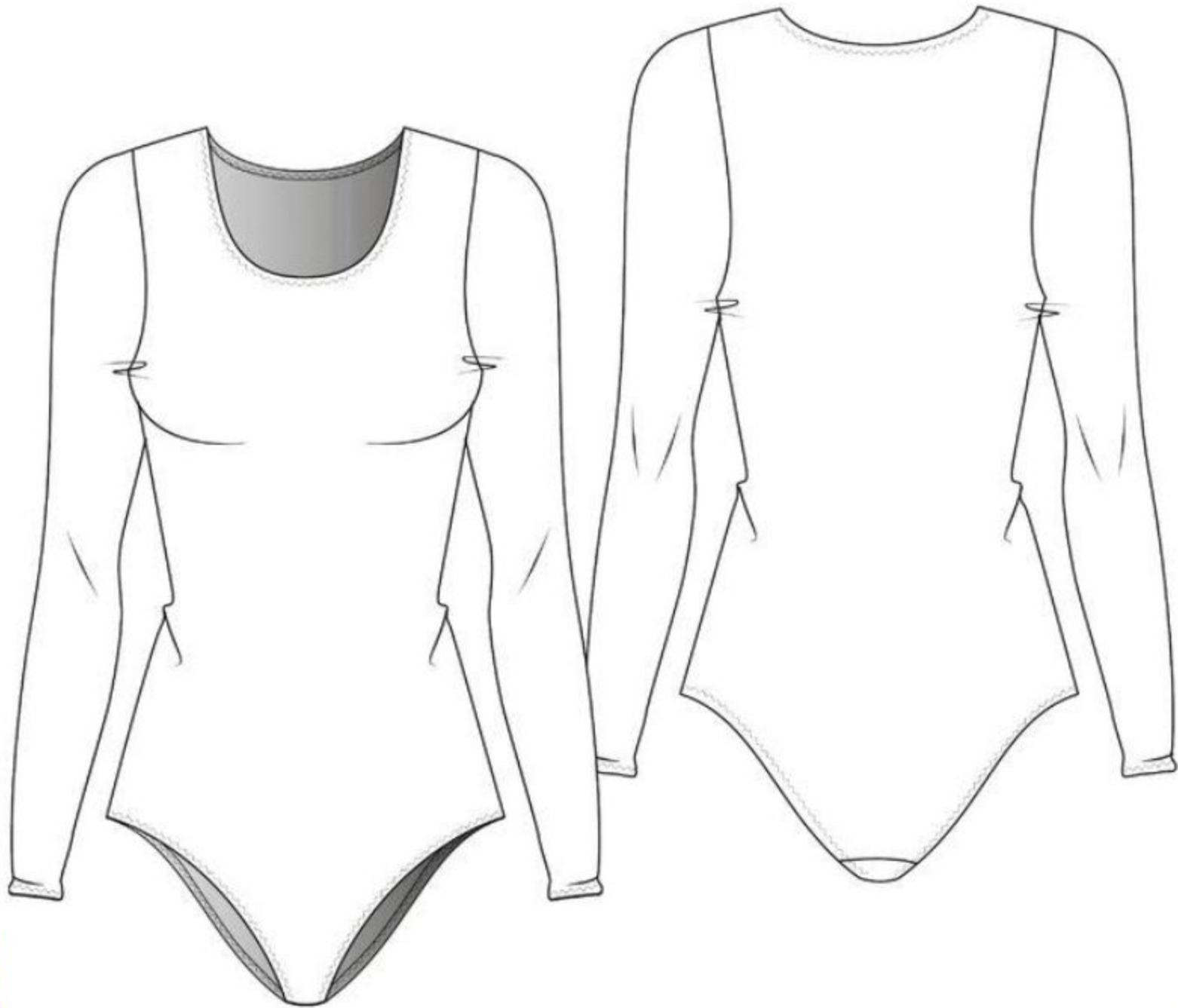


Sketches

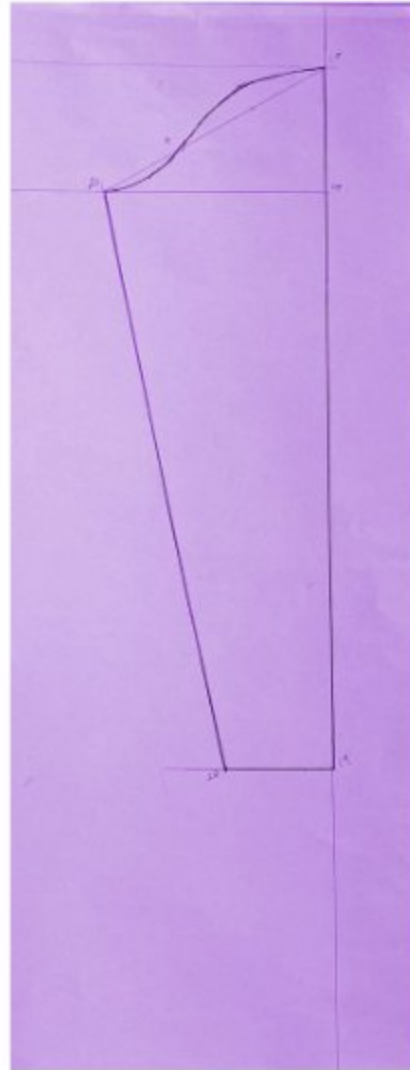
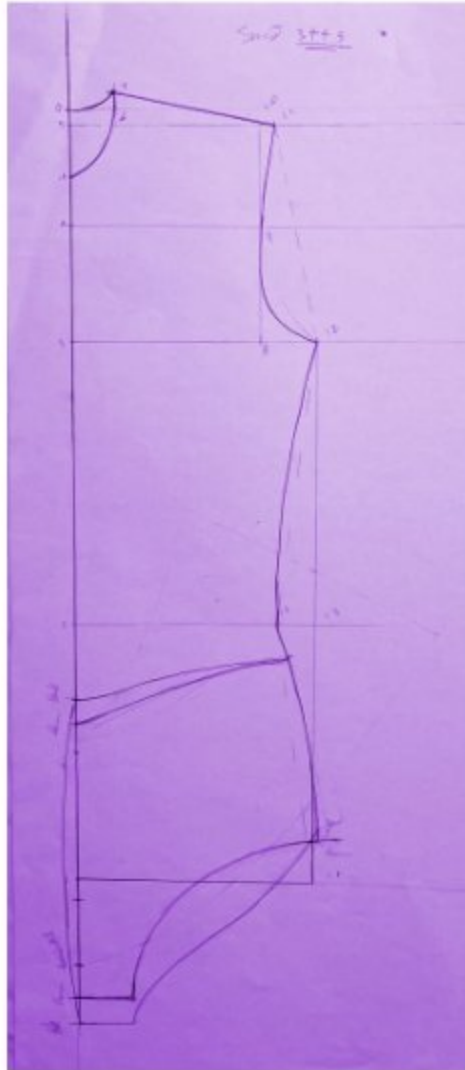


FABRICADEMY
textile and technology academy

Sketches



Sketches



Sketches



FABRICADEMY
textile and technology academy



Prototype



Prototype





Who - Sister

Accessible Design: Costumes are adapted for wheelchair use and seated positions.

Safety First: Avoid sharp elements to prevent skin irritation or injury.

Electronics Placement: Attach components to a bodysuit instead of the costume's interior.

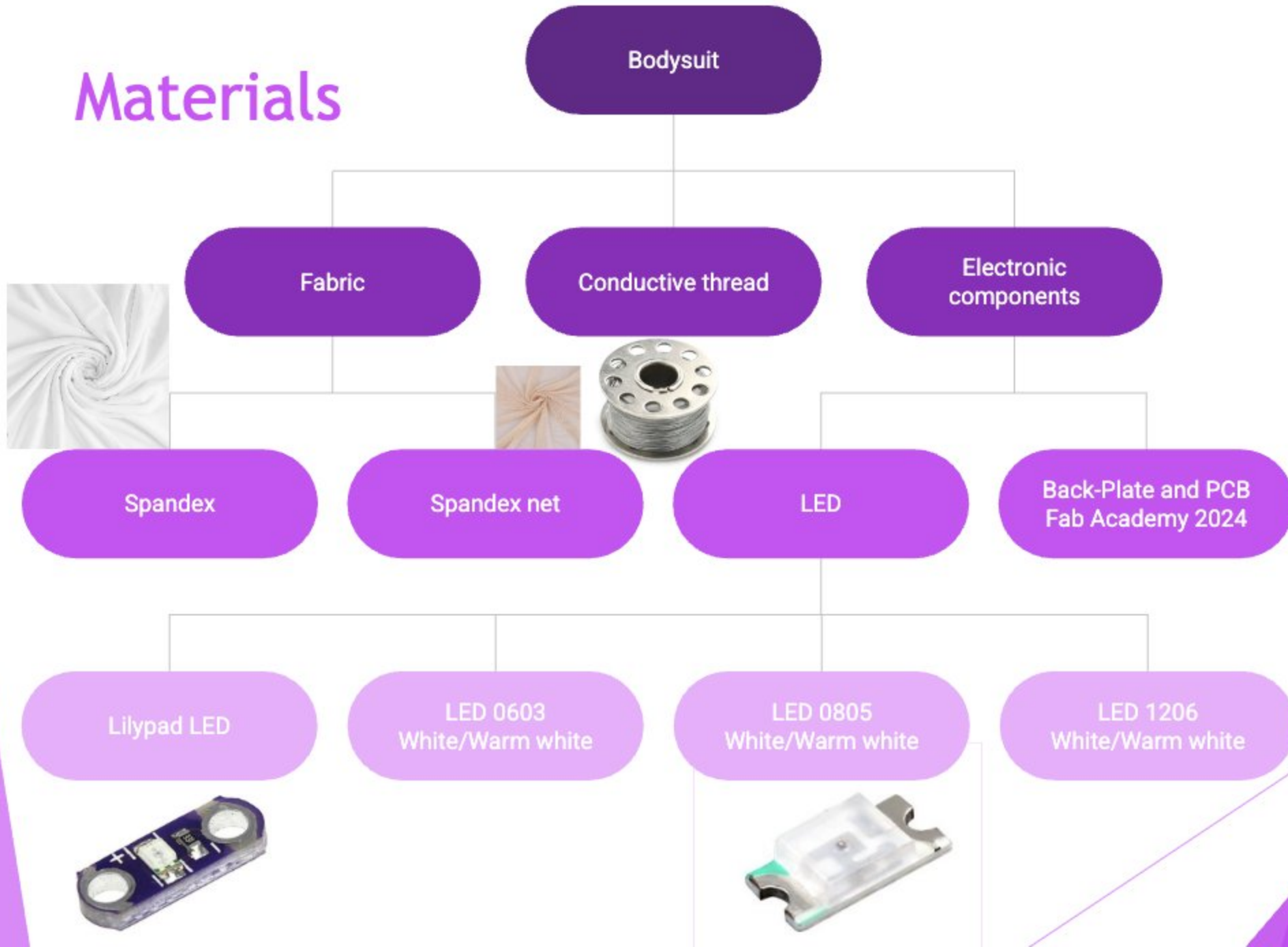
Ease of Use: Designs allow smooth transitions into character poses.

Inclusive Costumes: Focus on comfort, functionality, and visual appeal.

why

- ▶ Few cosplay makers use bodysuits for hidden attachments.
- ▶ Hiding electronics' stitching required extensive hand-stitching.
- ▶ A bodysuit streamlines the process and enhances both functionality and appearance.

Materials





Thank you

