

"We are stardust brought to life, then  
empowered by the universe to figure itself  
out — and we have only just begun.

-Neil deGrasse Tyson

# How It All Started

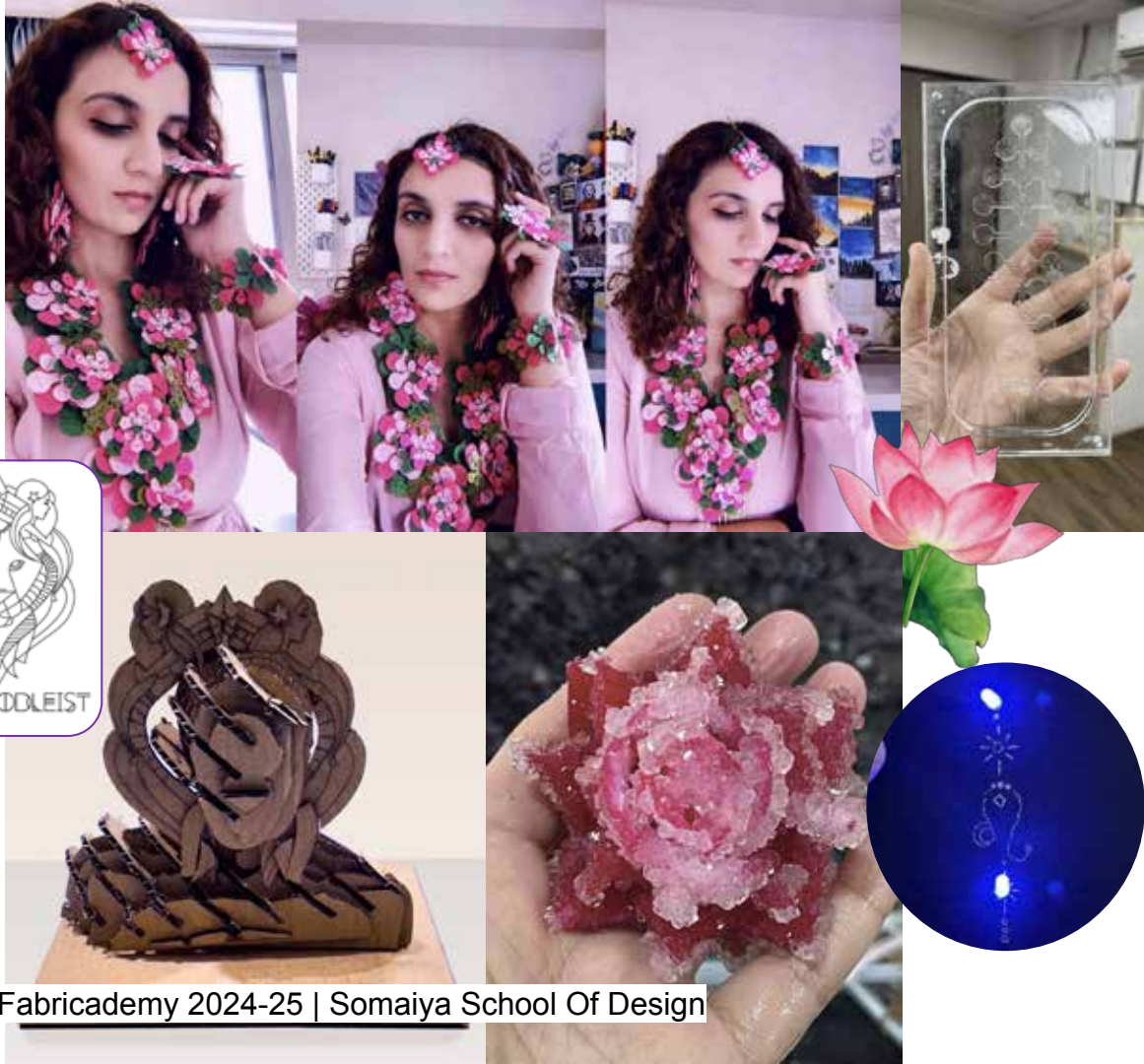
Mandalas have been a constant visual anchor in my creative journey, while symbolism has added layers of meaning to my explorations.





# Fabricademy Journey

Both elements found their way into many of my Fabricademy projects, guiding my process with depth, intention, and aesthetic rhythm.



# The Idea

As a digital designer, my work is often screen-based and visual.

Fabricademy gave me the opportunity to explore beyond the flat and digital—into the world of materials, tools, and technology.

This project bridges my love for mandalas with hands-on making, blending digital skills with craft to create something tactile, wearable, and spiritually resonant.








**Tradition & technology  
are often seen as opposites**

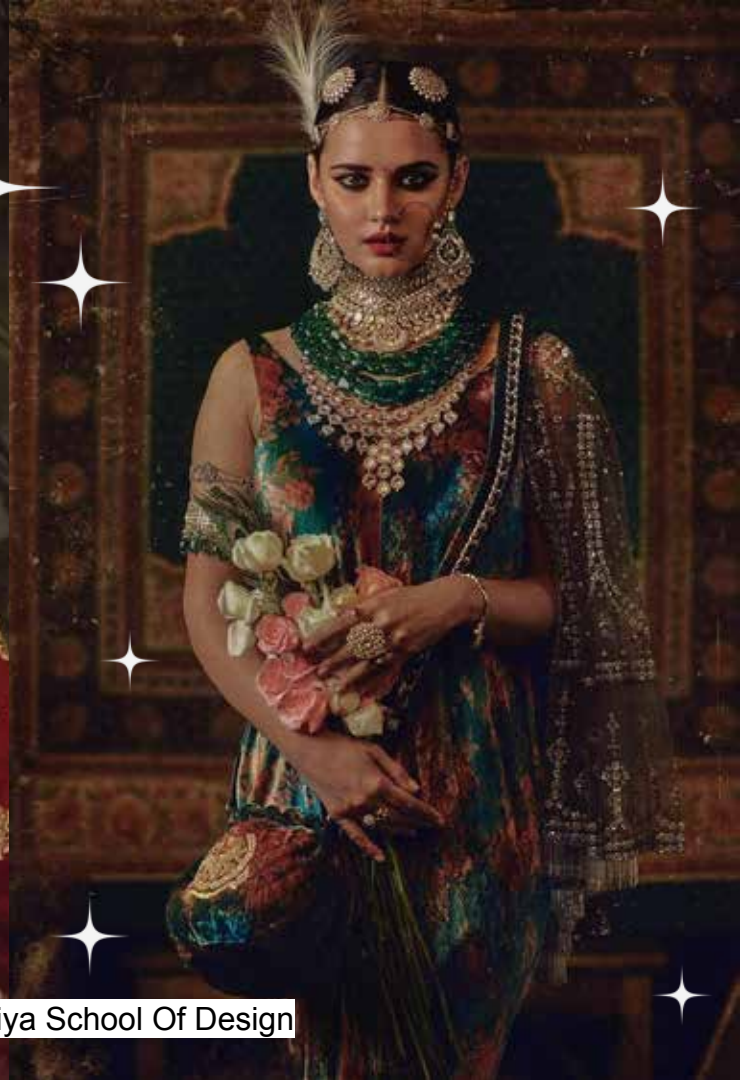




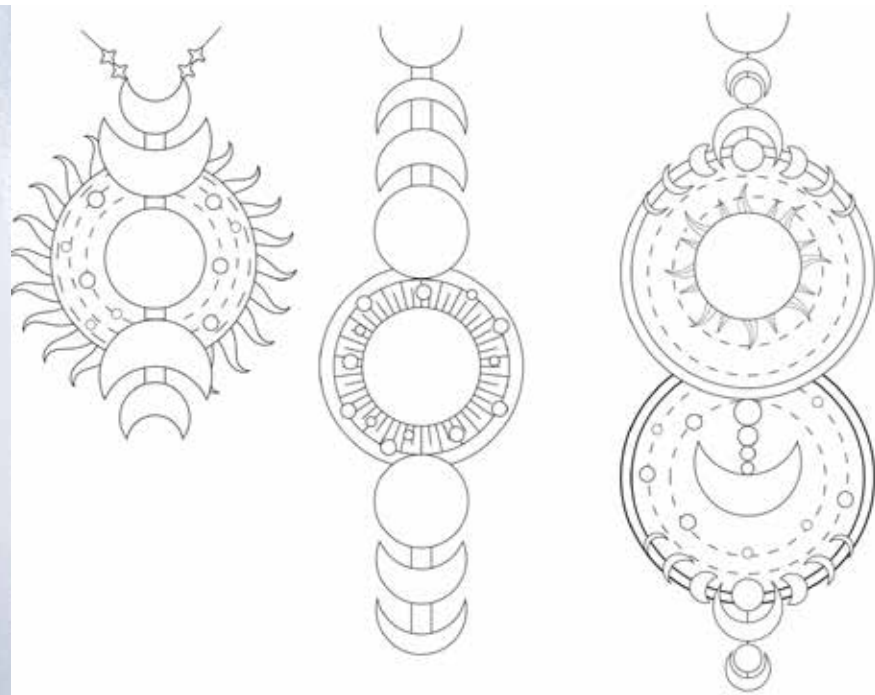
***"What if I could bring together the softness  
of traditional craft with the precision of  
digital fabrication?"***



**Jewelry has always  
been more than an  
adornment**

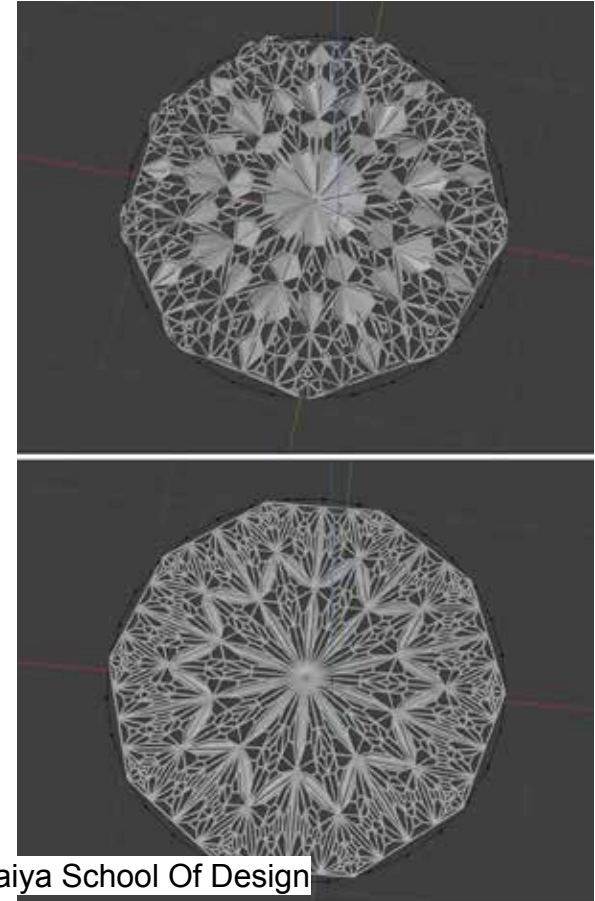
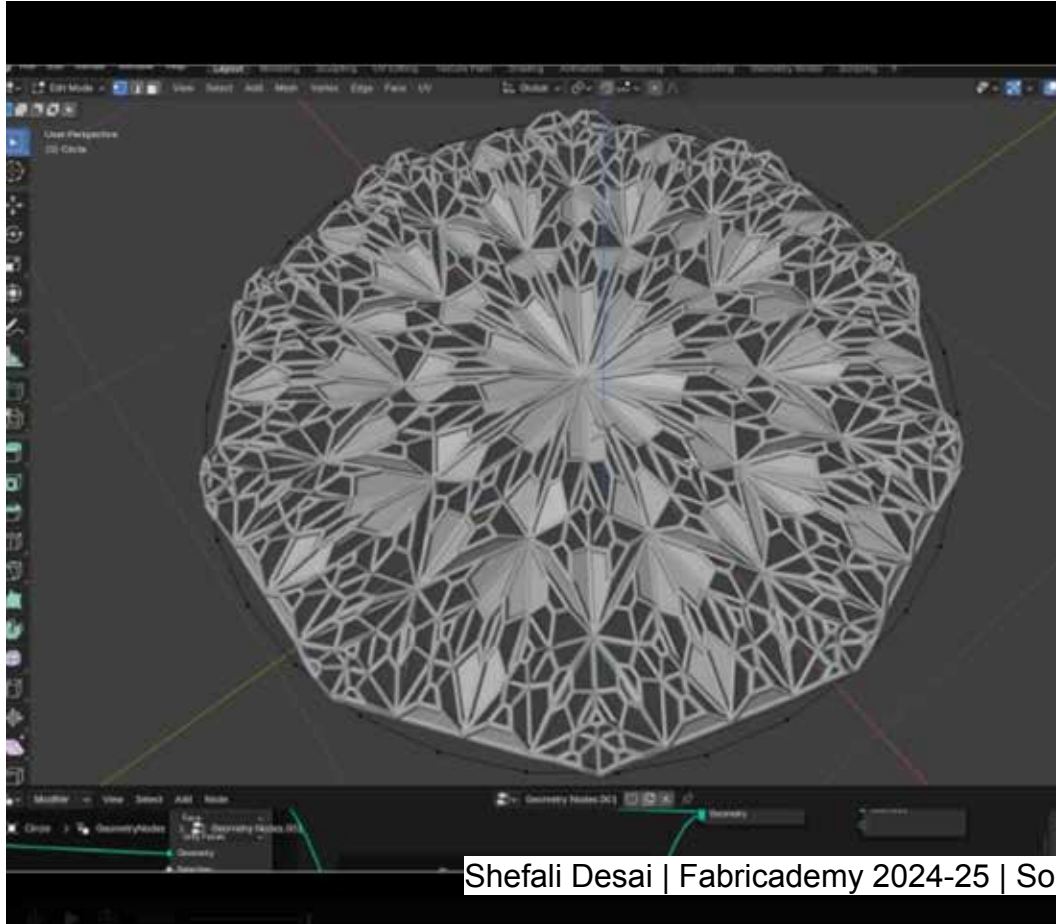


# Initial Design Process





# Parametric Experiments



Shefali Desai | Fabricademy 2024-25 | Somaiya School Of Design

# Experiments with the Shri Yantra Design




Shefali Desai | Fabricademy 2024-25 | Somaiya School Of Design



# Inspired By The Shri Yantra

The **Shri Yantra** is a sacred geometric symbol of **cosmic balance, creation, and manifestation**. Composed of interlocking triangles, it represents the **union of divine feminine and masculine energy**, guiding the flow of spiritual and material abundance. More than a motif, it is an **ancient map of the universe**, harmonizing energy, intention, and form.

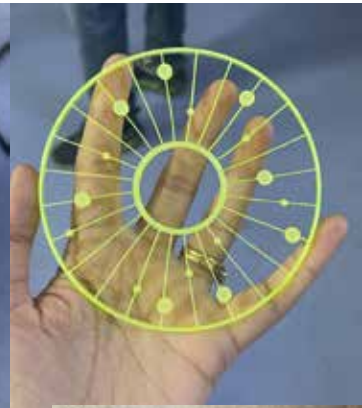
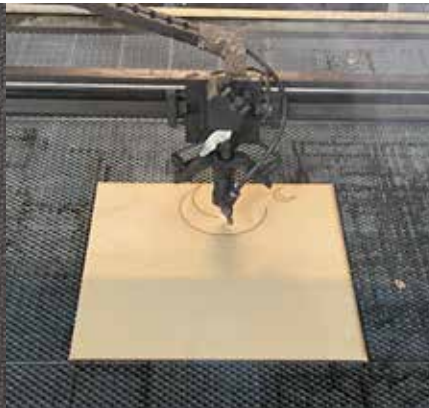




But I didn't want to simply illustrate it. I wanted to **give it life—through materials, light, and structure.**



# Production Process







Loom Weaving



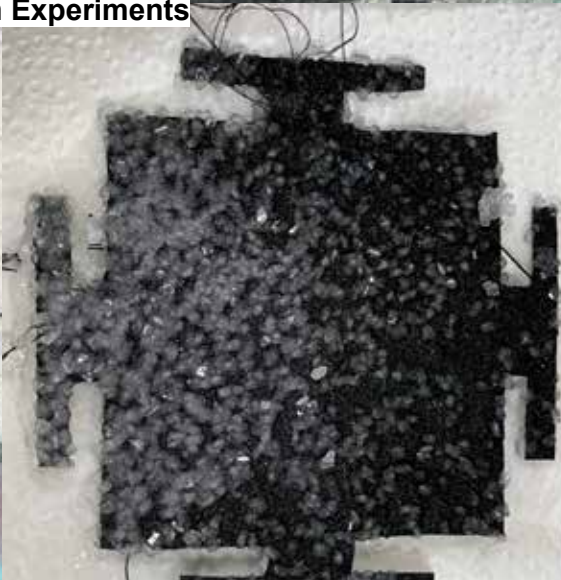
Final Laser Cuts







Crystallization Experiments



Shefali Desai | Fabricademy 2024-25 | Somaiya School Of Design



Embroidery







**The Traditional – Soft, Intimate, Handcrafted**







**The Digital – Precise, Structured, Futuristic**



Shefali Desai | Fabricademy 2024-25 | Somaiya School Of Design





## The Cosmic – Organic, Patterns, Transformations








**The Interplay of Hard & Soft, Light & Dark**







Now I'd like to *let the piece speak for itself.*



# The Goddess

Shefali Desai | Fabricademy 2024-25 | Somaiya School Of Design



This isn't just a necklace; it's a **fusion of ancient wisdom and modern innovation**. This piece finds **harmony—proving that tradition and technology don't compete, they complete each other.**



With this piece, I don't just design...I offer an invitation to see, to feel & to wear a part of the universe

🚀 **Expanding into a Full Collection** – Exploring how different pieces can embody sacred geometry and material interplay

🎨 **Collaborating with Artisans** – Bringing more traditional craft techniques into contemporary jewelry

💎 **Working with Jewelry & Fashion Designers** – To create a line that fuses artistry, craftsmanship, and futuristic design



The background is a dark blue field filled with a complex, glowing network of thin, light blue lines. These lines connect numerous small, bright blue dots, creating a web-like or neural network structure. Some dots are more prominent than others, and the overall effect is one of dynamic, interconnected energy.

I am **Shefali Desai**,  
and this is just the beginning...  
of **The Goddess series.**





# Thank You

Fabricademy | 2024-2025



Somaiya School  
Of Design