



# Recoded Tatreez

A story of a thousands stories



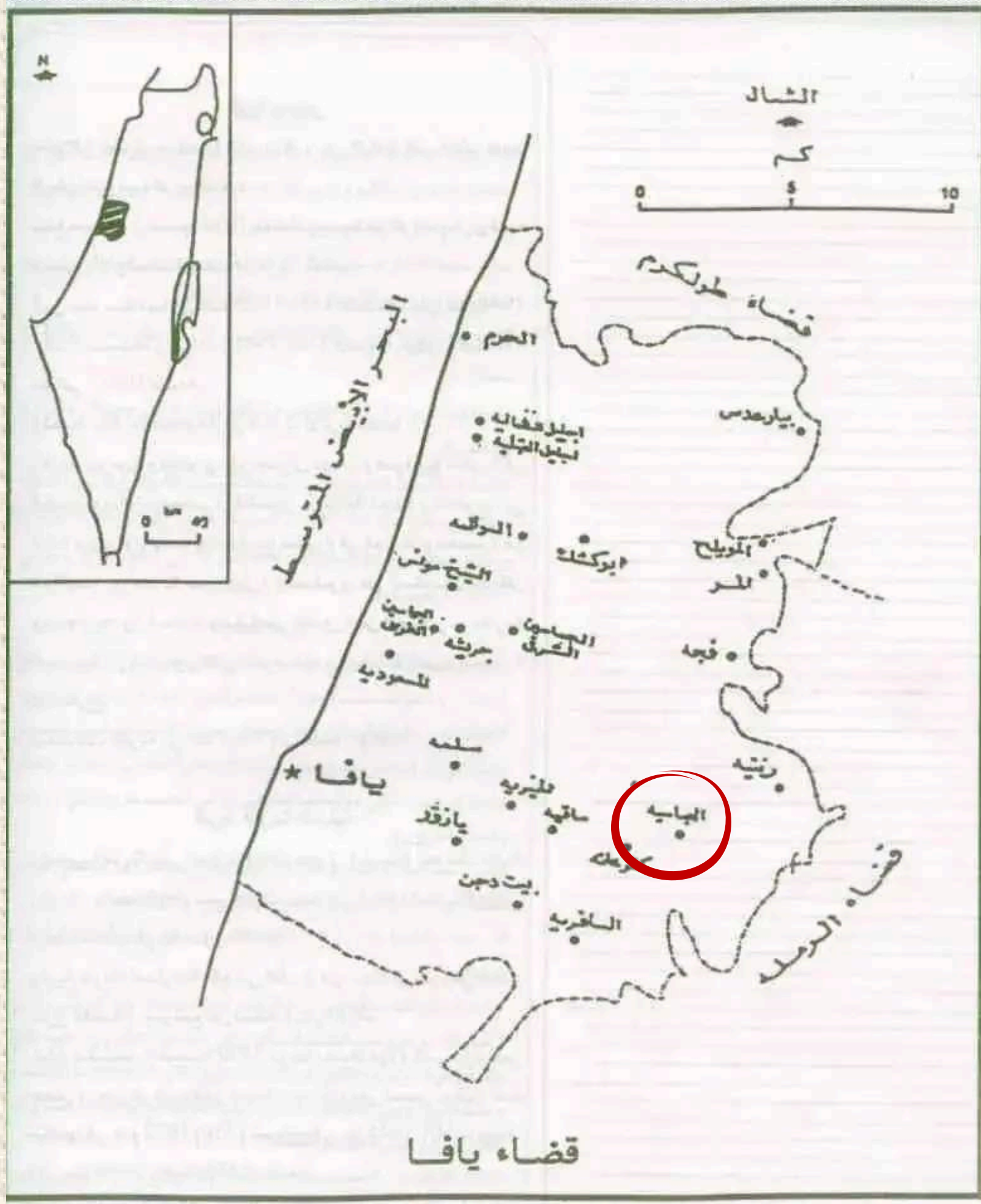
A Program by | أحد برامج

مؤسسة ولي العهد  
Crown Prince Foundation



مساحة الصنّاع  
The Makerspace

# A FASHION AS A CARRIER OF MEANING



أخذ منازل القرية، وقد بات الآن مكتباً لشركة تأمين إسرائيلية (سنة 1990) [العباسية]



PERSONAL PHOTOS FROM MY FAMILY FOR OUR VILLAGE

# LIFE IN PALESTINE BEFORE THE NAKBA

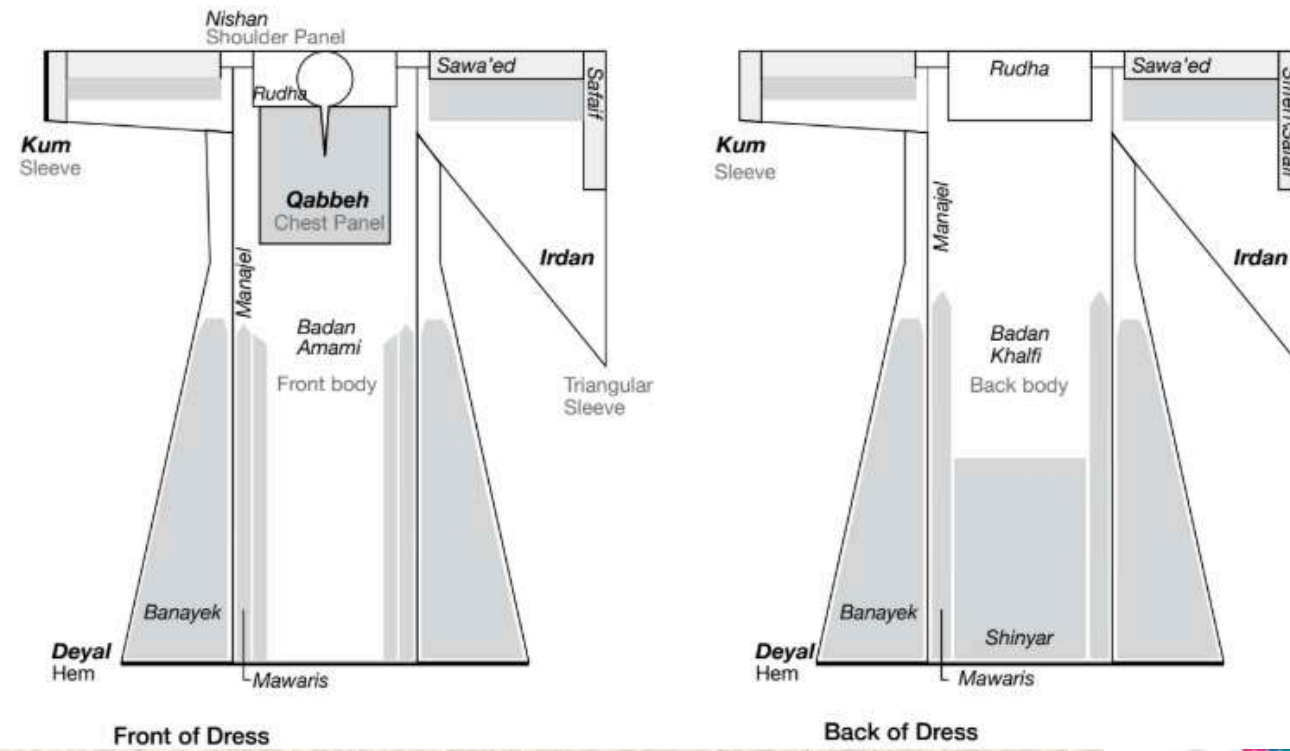
PALESTINIAN TATREEZ, ESPECIALLY THE PEASANT (FALLAH) TATREEZ KNOWN AS CROSS STITCH, IS ONE OF THE OLDEST DECORATIVE TRADITIONS IN THE WORLD, AND ITS ORIGINS DATE BACK TO THE TIME OF THE CANAANITES.



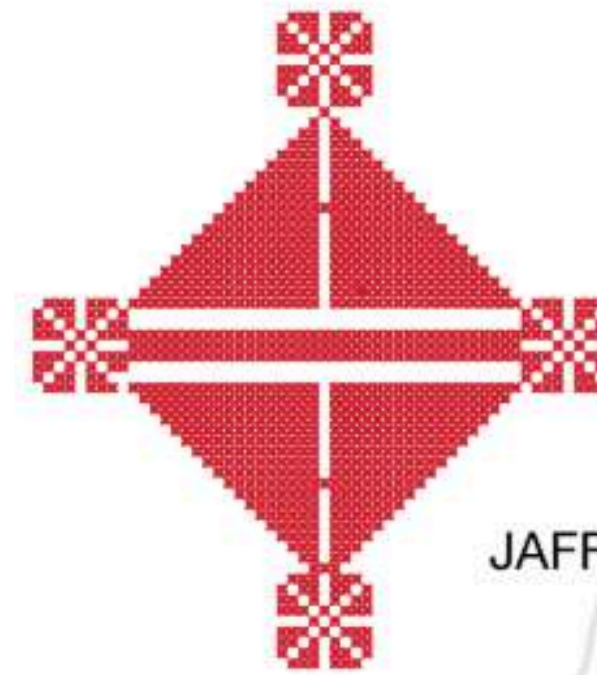
# THOB & PATTERNS FROM DIFFERENT CITIES IN PALESTINE



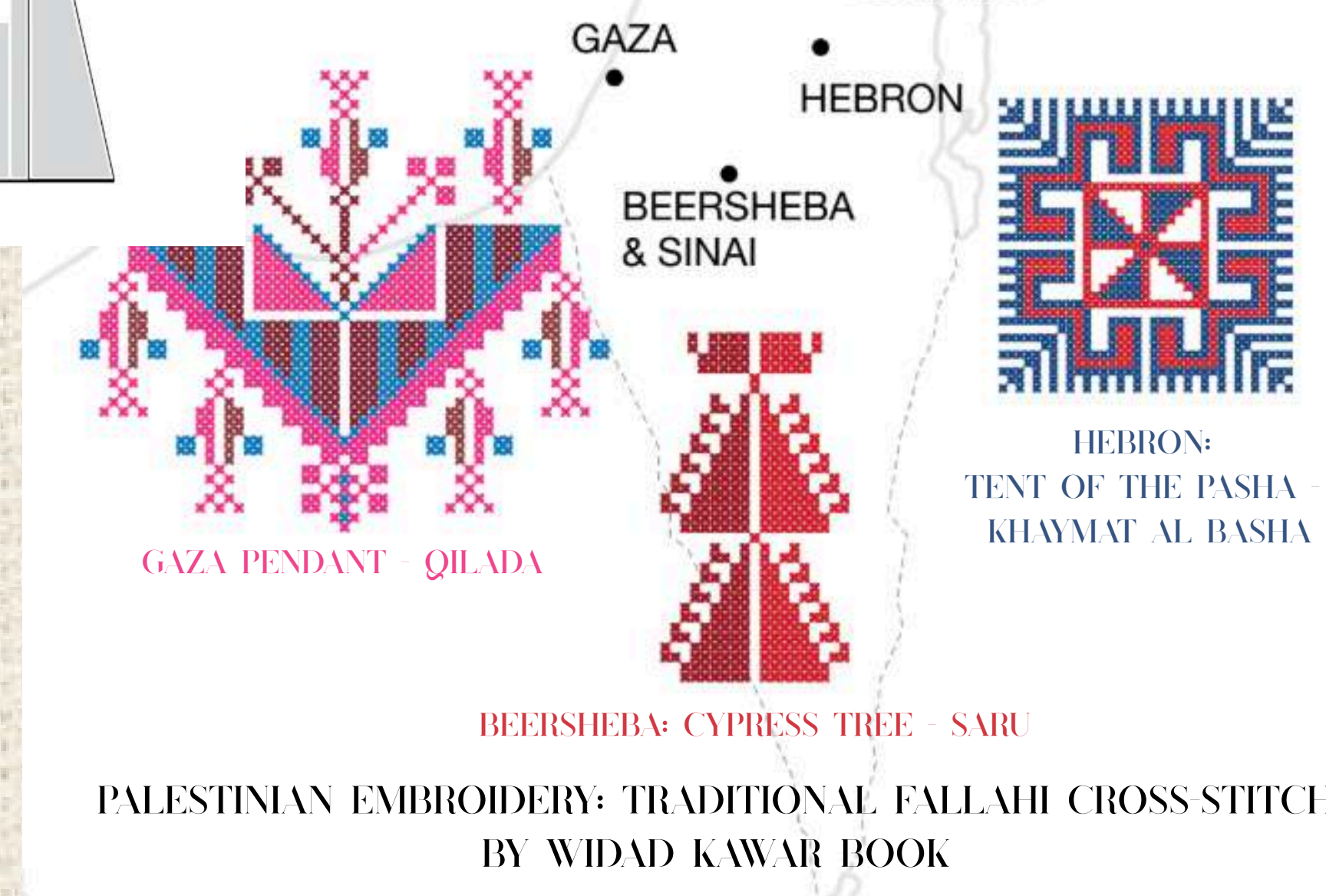
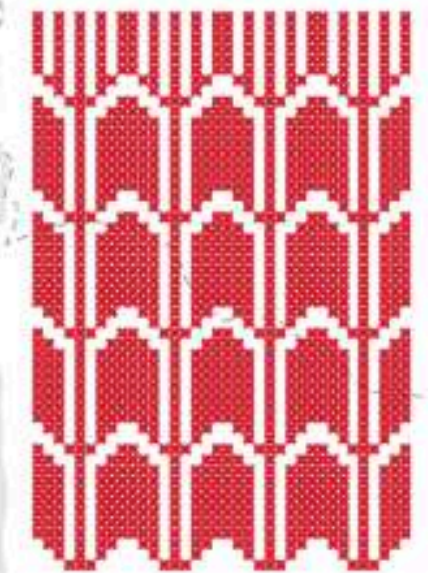
Costume patterns and placement of embroidery



JAFFA : AMULETS - HUJUB



RAMALLA: PALM TREE - NAKHLA



JAFFA

RAMALLAH

JERUSALEM

BETHLEHEM

GAZA

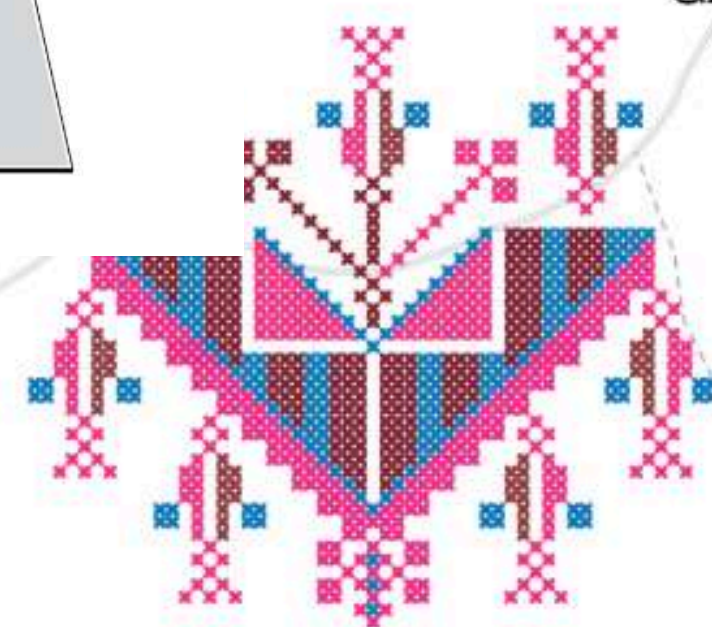
HEBRON

BEERSHEBA & SINAI



HEBRON:  
TENT OF THE PASHA -  
KHAYMAT AL BASHA

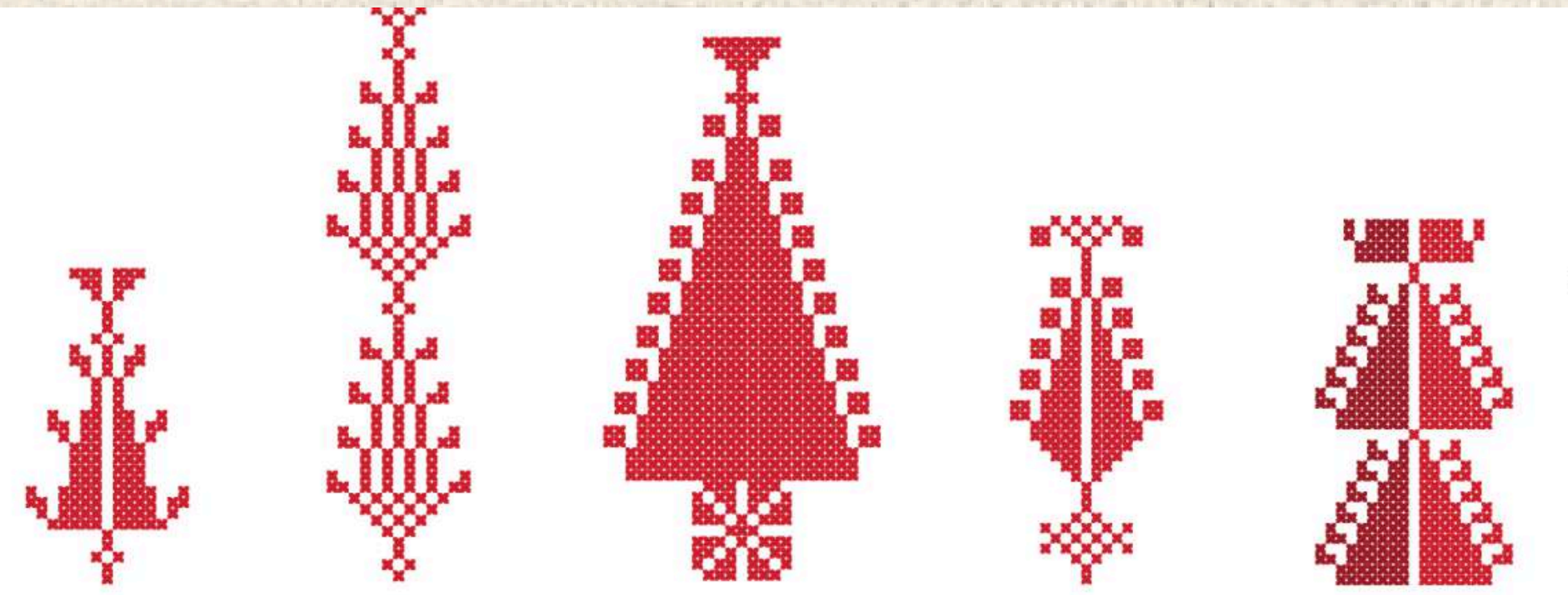
GAZA PENDANT - QILADA



BEERSHEBA: CYPRESS TREE - SARU



PALESTINIAN EMBROIDERY: TRADITIONAL FALLAHI CROSS-STITCH  
BY WIDAD KAWAR BOOK



Ramallah      Hebron      Jaffa      Gaza      Beersheba

WE CANT FIND ANY PHOTO FOR OUR VILLAGE THOB DETAILS & TATREEZ!!!



The only Photo of my parents grandmother wearing very simple tatreez thob



**The Nakba and Forced Displacement** (1948): The displacement of women from their villages disrupted the continuity of embroidery traditions in each village.



Loss of Original Dresses: Many dresses were **lost or damaged** during the displacement without documentation.

## Why did part of the thobs get lost?



**Forced Assimilation** into New Communities: The mixing of women from **different villages** led to a blending of motifs and a **loss of village identity**.

Policies of Cultural Erasure: **Colonial practices** contributed to the marginalization of the Palestinian dress and its symbolism.

She is not one woman  
She is a story embodied  
Her name is Palestine



ASL MEANS: ORIGIN



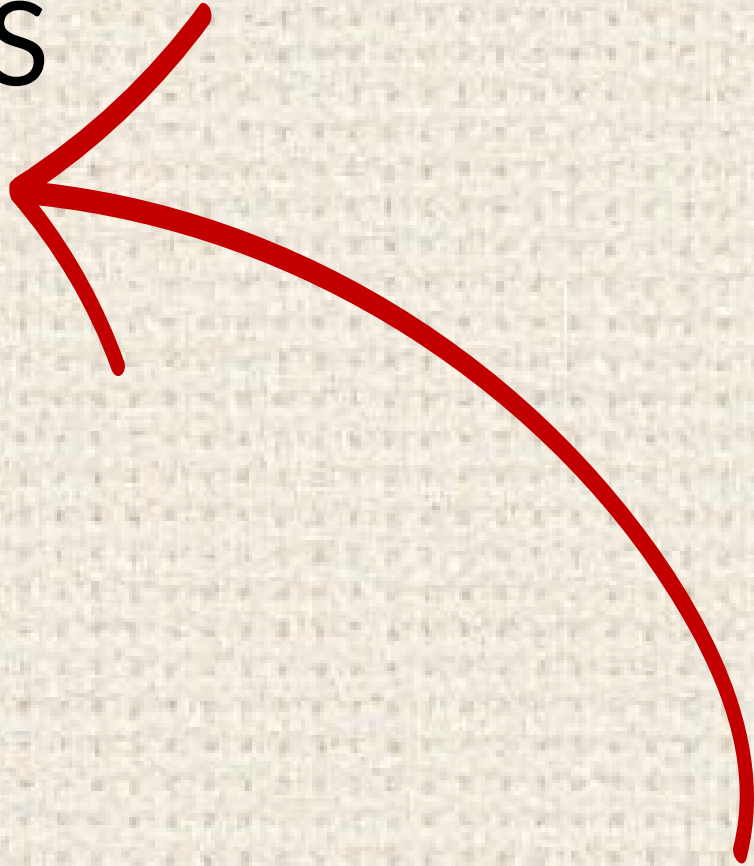
ASL THOB



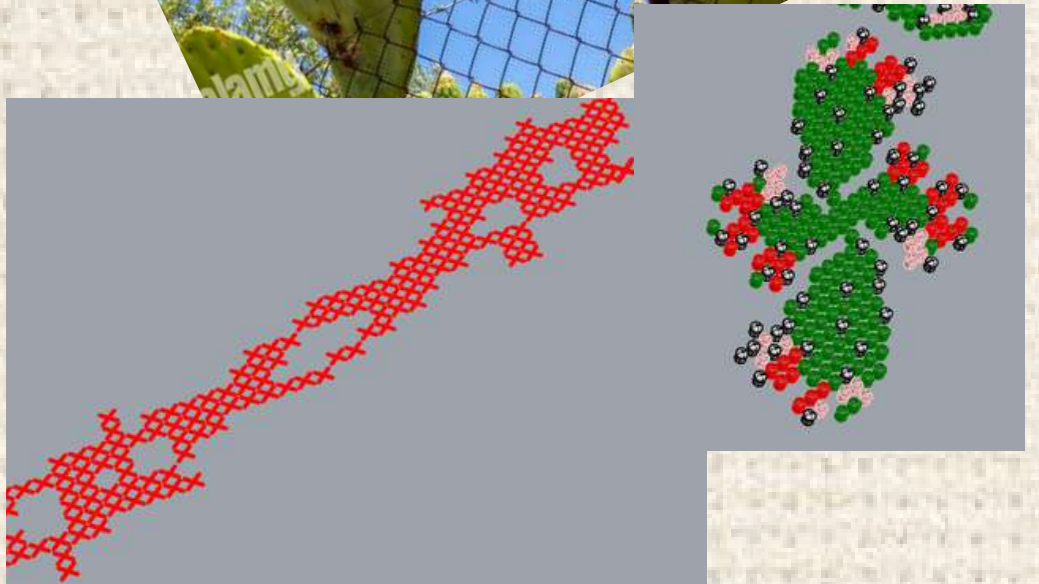
COLOUR PALETTE



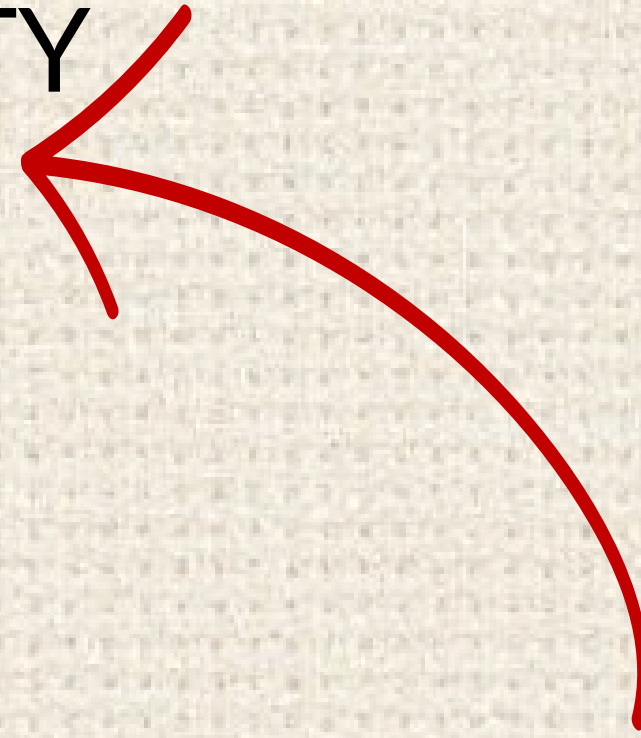
SHAHID MEANS: WITNESS



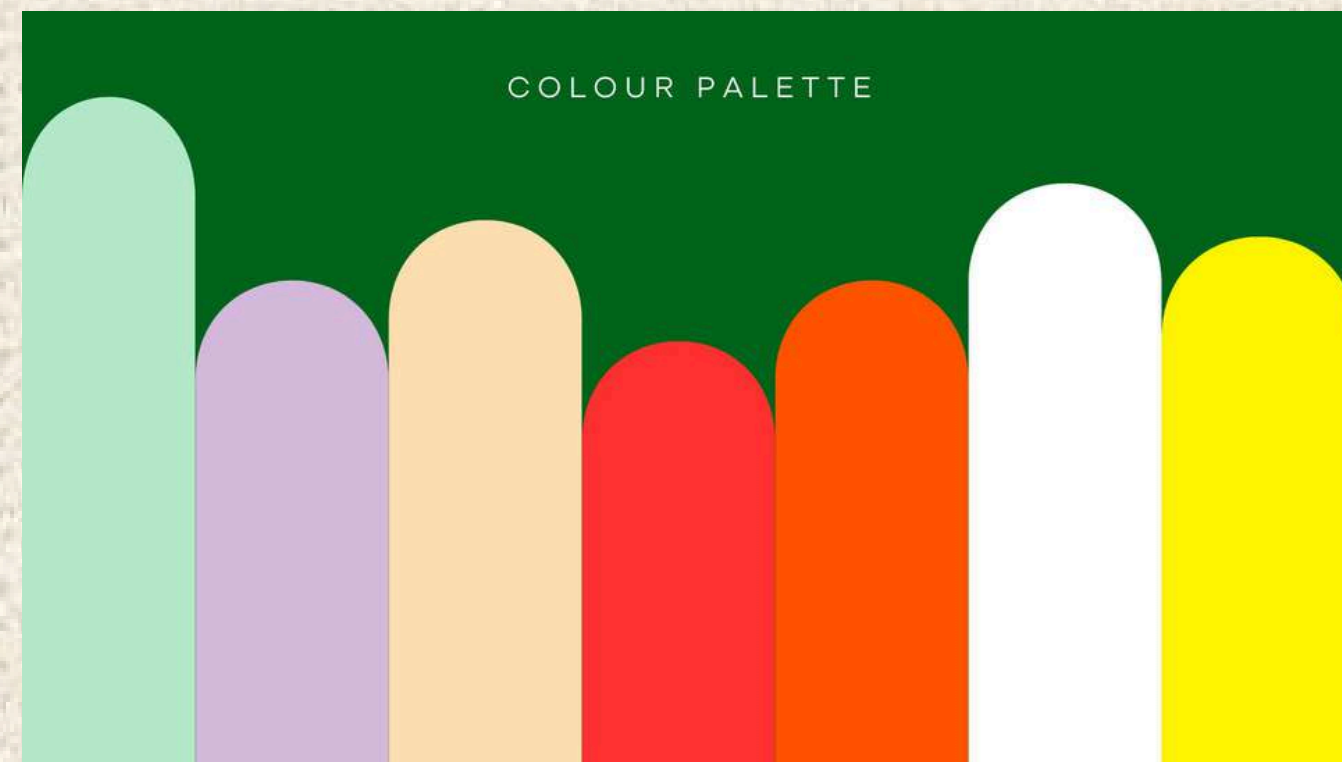
SHAHID THOB



YAQEEN MEANS: CERTAINTY

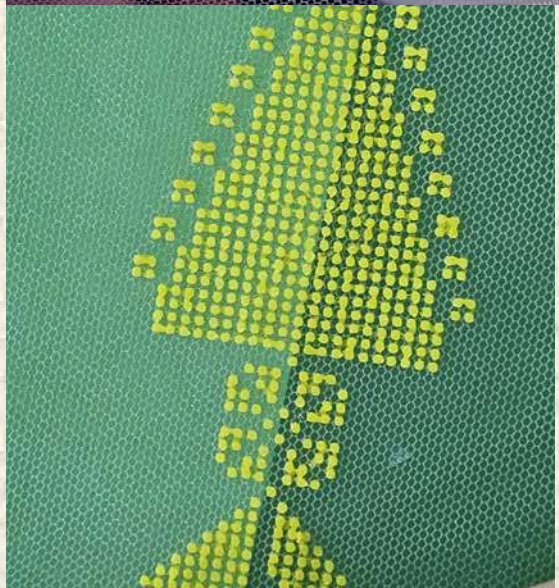
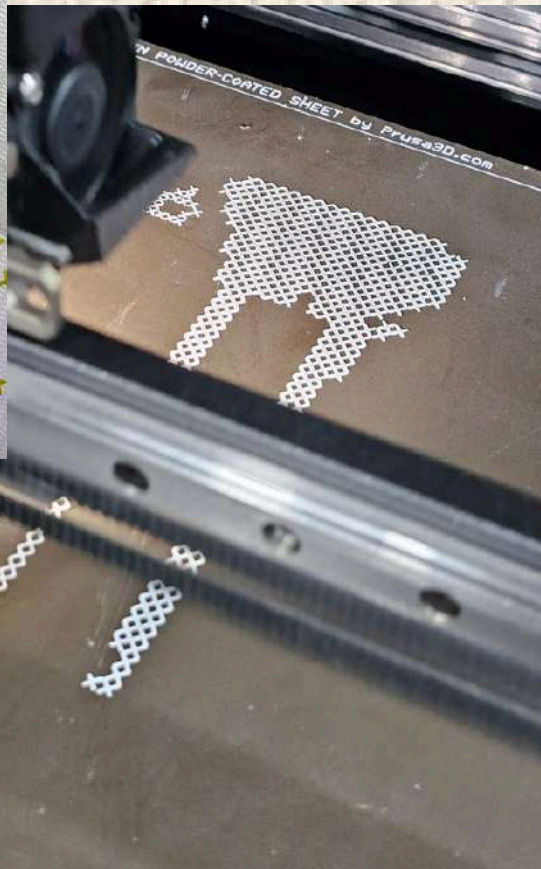
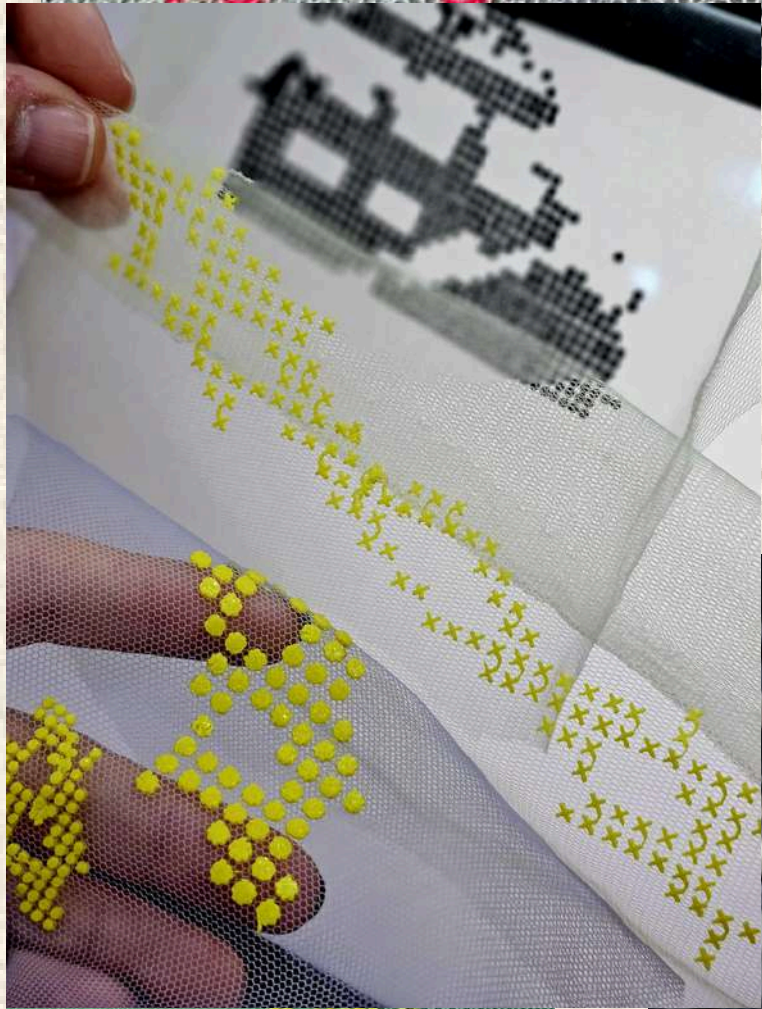
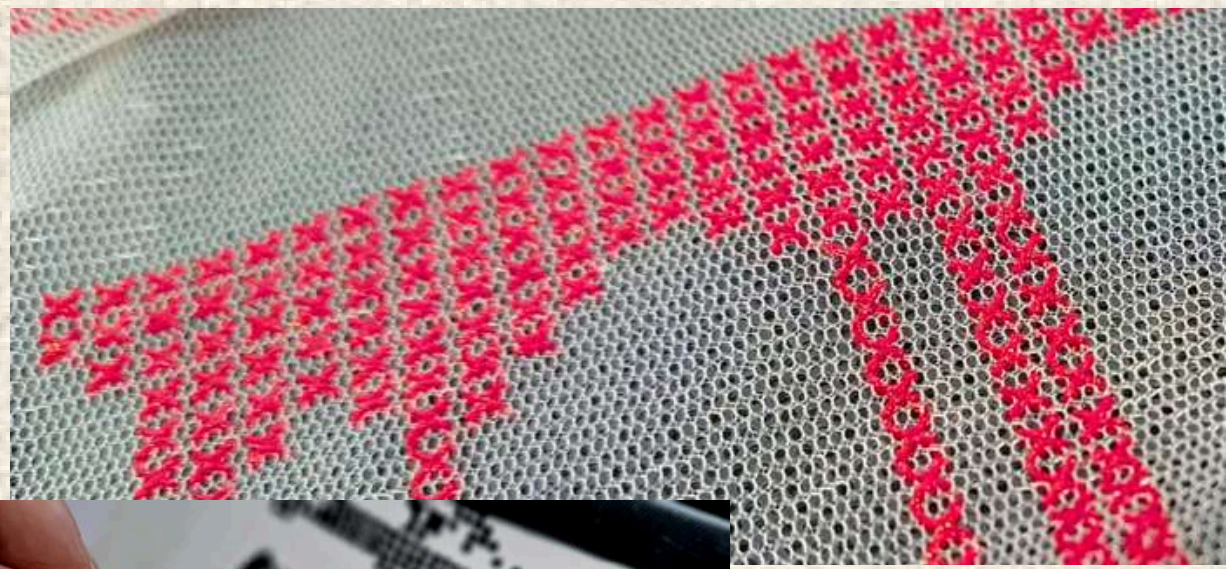


YAQEEN THOB

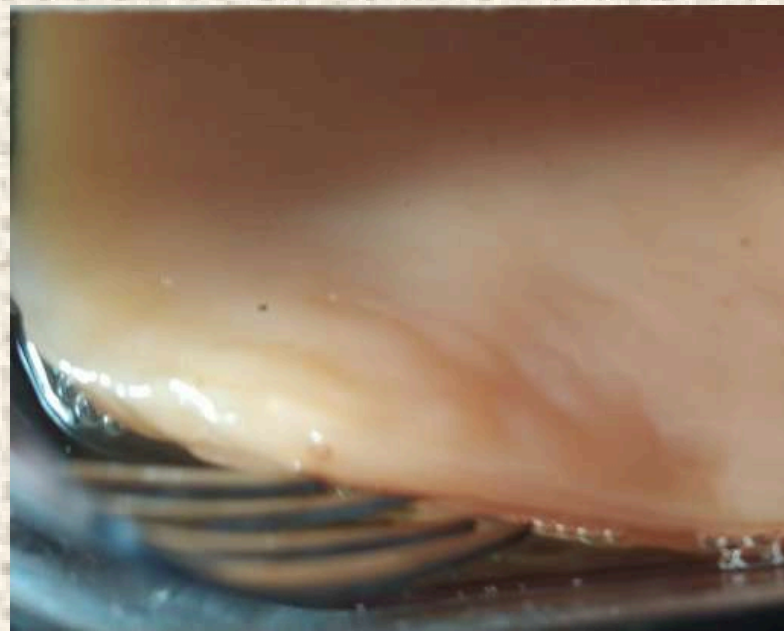


# BELTS & HEAD PIECES





# PROTOTYPING



chest panel 2.3dm (234 MB) - Rhinoceros 8 Commercial - [Perspective]

File Edit View Curve Surface SubD Solid Mesh Drafting Transform Tools Analyze Render Window Help

Display mode set to "Rendered".  
Display mode set to "Shaded".

Command:

Standard CPlanes Set View Display Select Viewport Layout Visibility Transform Curve Tools Surface Tools Solid Tools SubD Tools Mesh Tools Render Tools Drafting New in V8

Perspective

Layers

Q,Sea

Layer Layer Layer Layer Layer Layer Layer Layer Layer Layer Layer

ISnap

End Near Point Mid Cen Int Perp Tan Quad Knot Vertex Project

Disable

File

Legend

Tool

Used filament

- Extruder 1 1.26 m 3.76 g
- Extruder 2 0.94 m 2.81 g
- Extruder 3 0.39 m 1.16 g
- Extruder 4 0.20 m 0.60 g
- Extruder 5 1.28 m 3.82 g

Original Prusa XL - 5T Input Shaper 0.4

Supports: None

Infill: 15% Brim:

Name

grey

Sinking

grey.stl

black.stl

orange.stl

yellow.stl

red.stl

Part manipulation

World coordinates  X  Y  Z

Position: 179.56 182.49

Rotate (relative): 0 0

Scale: 100 100

Size [World]: 262.12 91.7

Inches

Sliced Info

Used Filament (g): 12.14

- Filament at extruder 1 3.76
- Filament at extruder 2 2.81
- Filament at extruder 3 1.16
- Filament at extruder 4 0.60
- Filament at extruder 5 3.82

Used Filament (m): 4.07

- objects 3.77
- wipe tower 0.30

Used Filament (mm<sup>3</sup>): 9794.21

Cost: 0.31

- objects 0.29
- wipe tower 0.02

Estimated printing time:

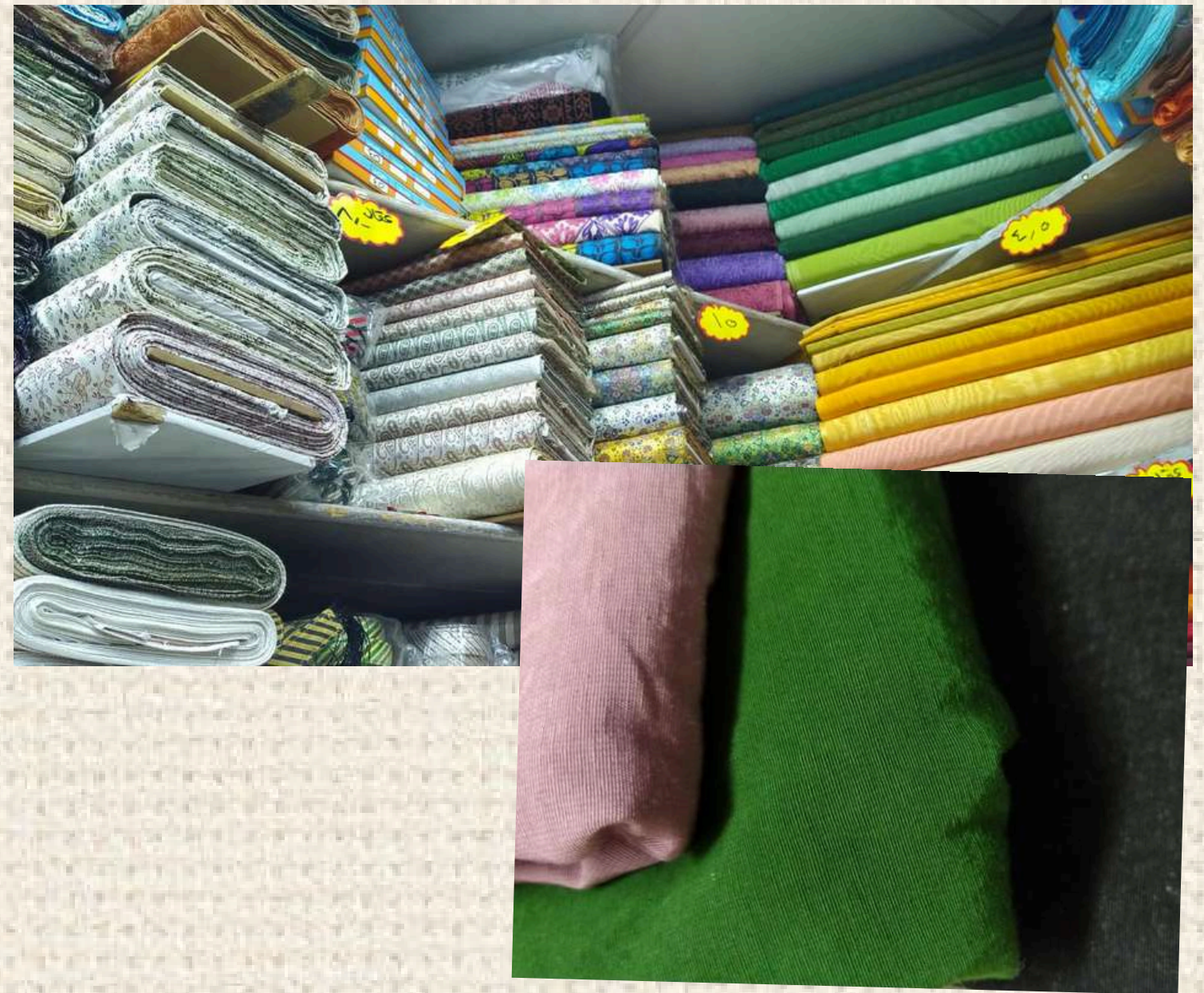
- normal mode 2h32m
- stealth mode 2h46m

Number of tool changes 20

WARNING: Detected print stability issues: [Reset](#)

Update check failed for the following vendors: [Update](#)

830245



WHERE I AM KNOW





THANK YOU