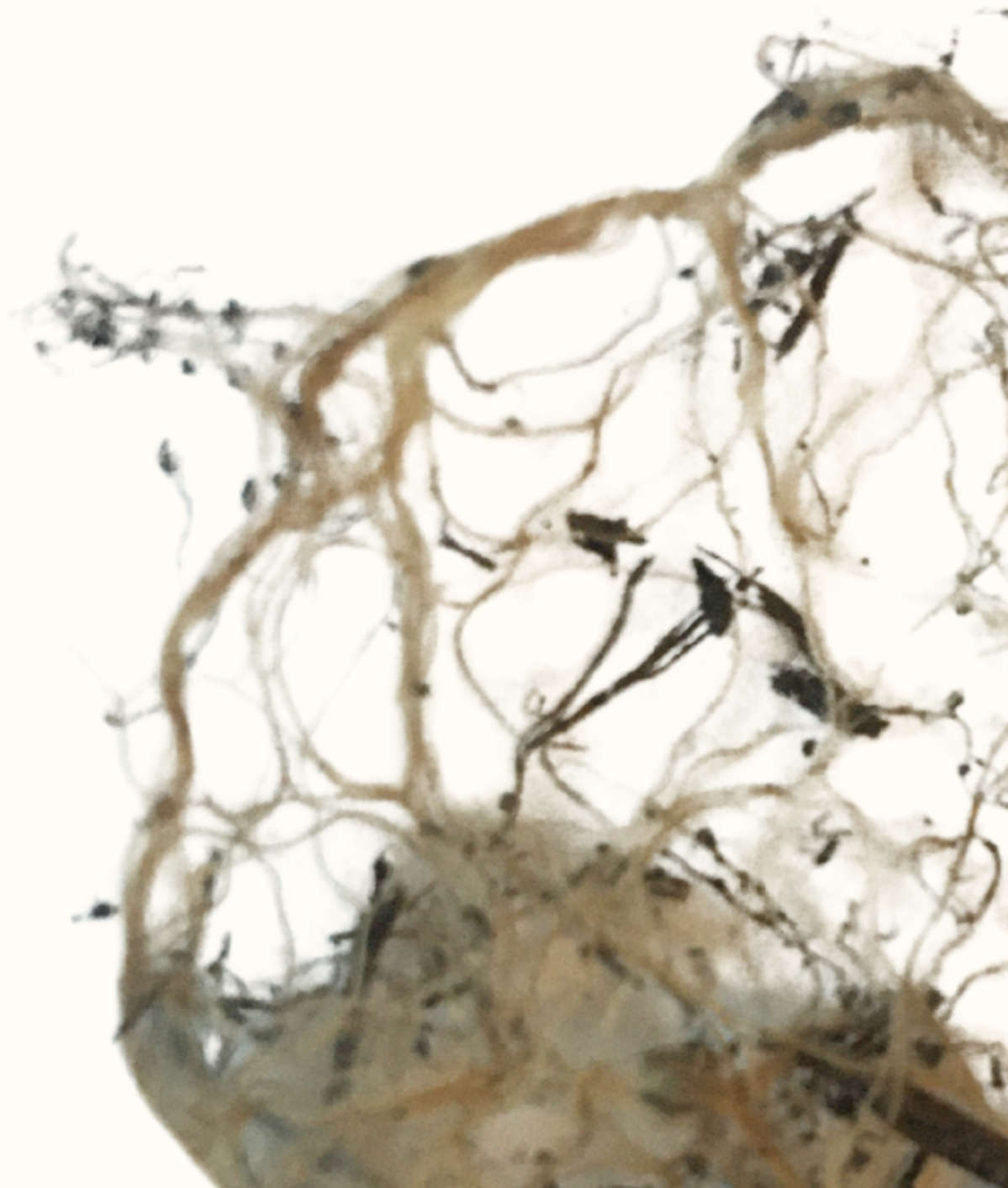


# (UN)ROOTED

---

A N I N T E R A C T I V E I N S T A L L A T I O N  
E X P L O R I N G B E L O N G I N G , G R O W T H &  
C O N N E C T I O N

Project Proposal  
Fabricademy 2025/2026  
Johanna Schründer



# How am I rooted when everything is in motion?

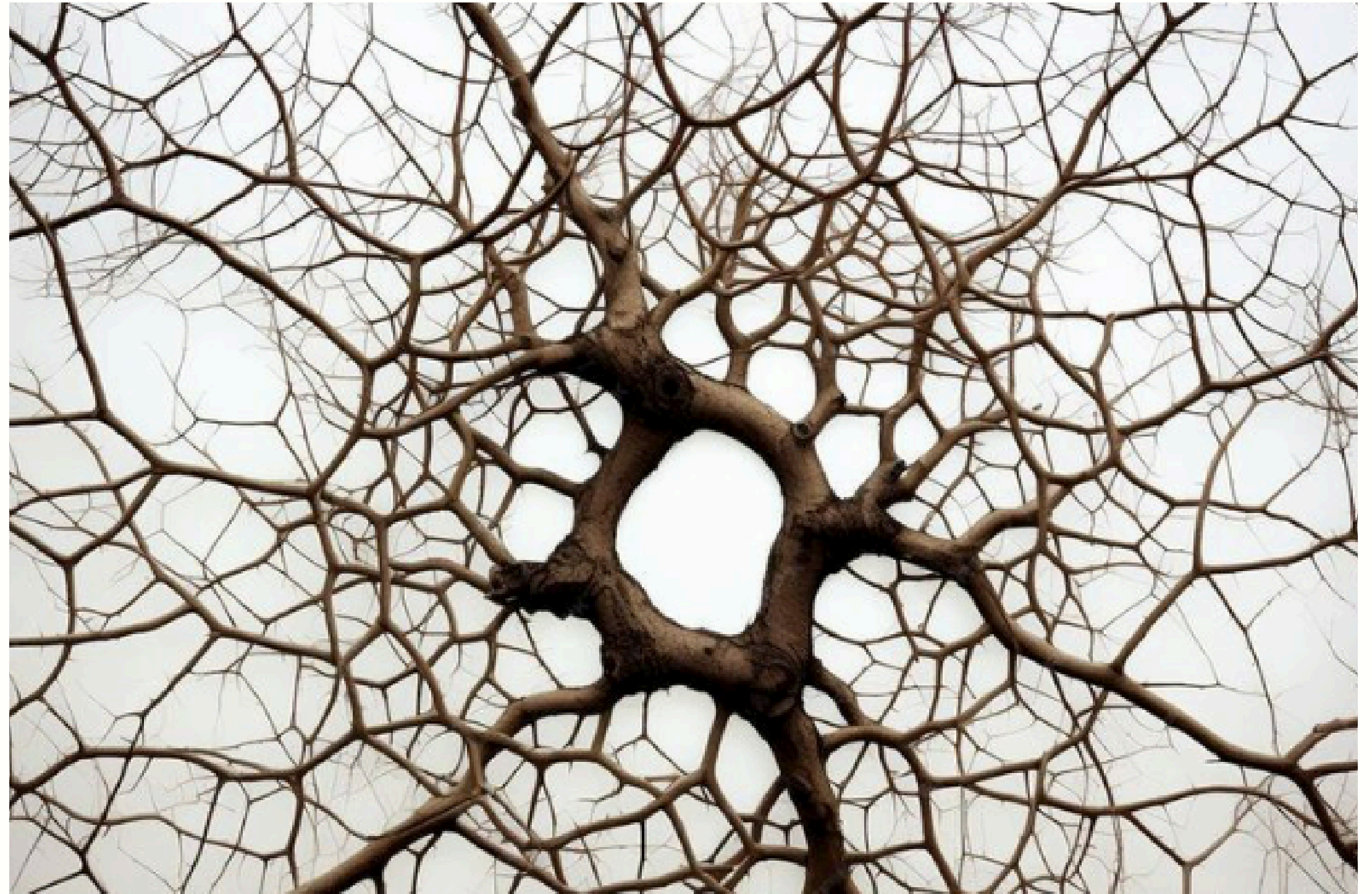


image credits: Peter Marlow/Magnum Photos

- We live in a time of continuous mobility - Places, identities, and relationships are fluid
- Rootedness as a Process
- Rooting is no longer only physical or social. It also exists in digital space.

# Reconneting with our roots

- Inviting people to reconnect with their roots and experience a sense of groundedness.
- The installation creates space to reflect on what it means to feel rooted—physically, emotionally, and collectively.



# Roots & Parametric Design

- Blanket made of naturally grown roots.
- Roots grown inside parametric molds  
→ based on parameters such as distance to the exhibition space and age
- Collaborative growth process  
→ friends, family, colleagues each grow roots using a provided kit.
- Grown roots are returned and assembled into a quilted blanket,



image credits: Johanna Schröder



AI-generated image

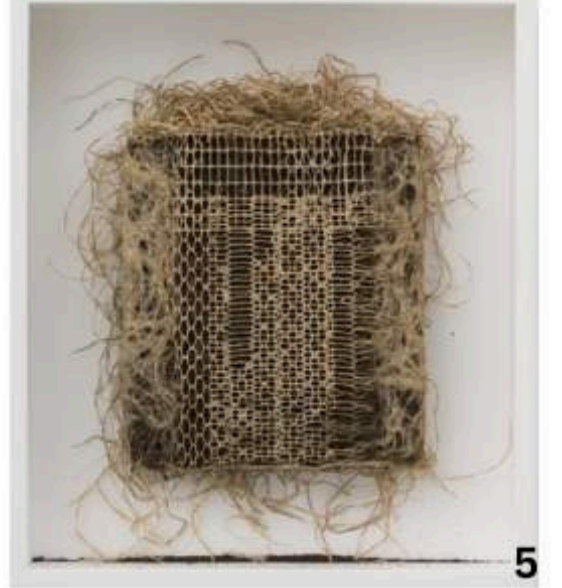
# Sensors & Interaction

- **Touch sensor**  
→ triggers video projection of growing roots
- **Proximity sensor**  
→ growing root sounds (louder when closer, silent when distant)
- **Screen Projection**  
→ connection of physical & digital, Visualization via Touch Designer

*Visitors interact directly with the roots, experiencing connection through movement and touch.*

# State of the art

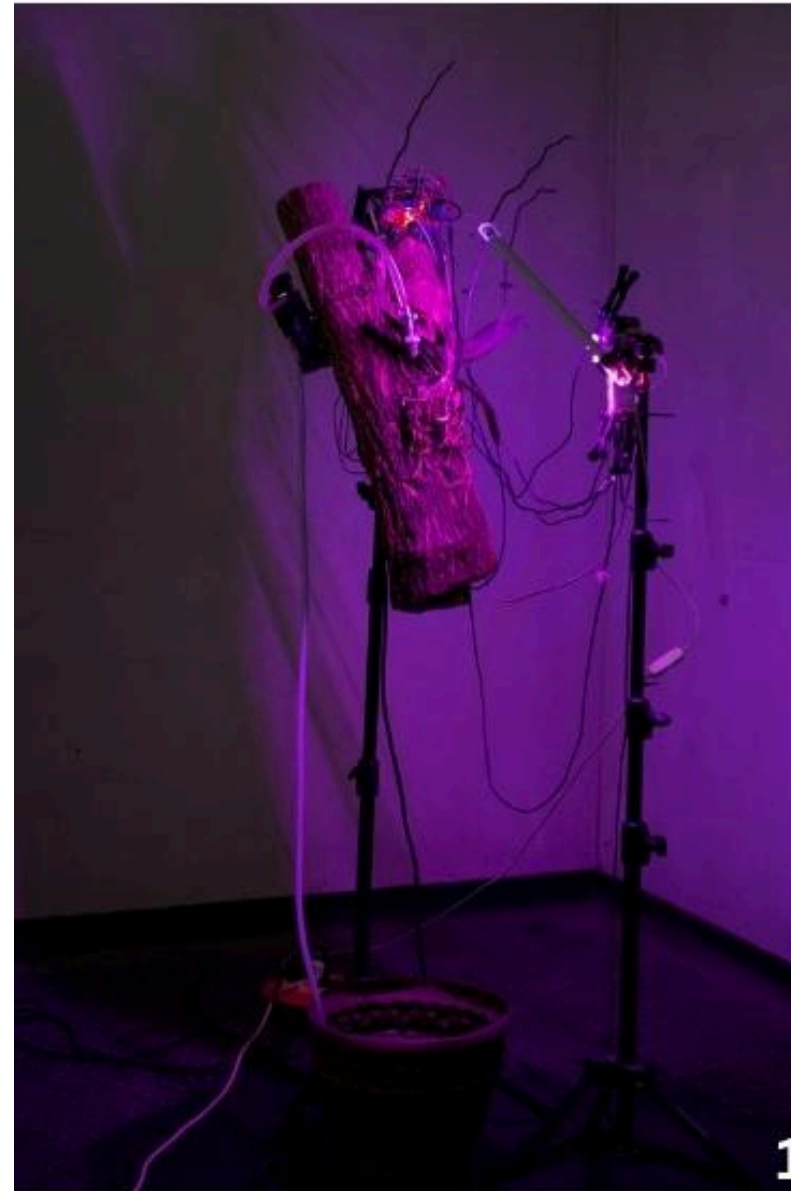
*roots*



1. Grown Exploration - Jacob Olmedo
2. Root Systems - Carole Collet
3. Rootful - Zenna Holloway
4. Amber Grain Embroidery - Barbara Rakovska
5. Apical - Diana Scherer

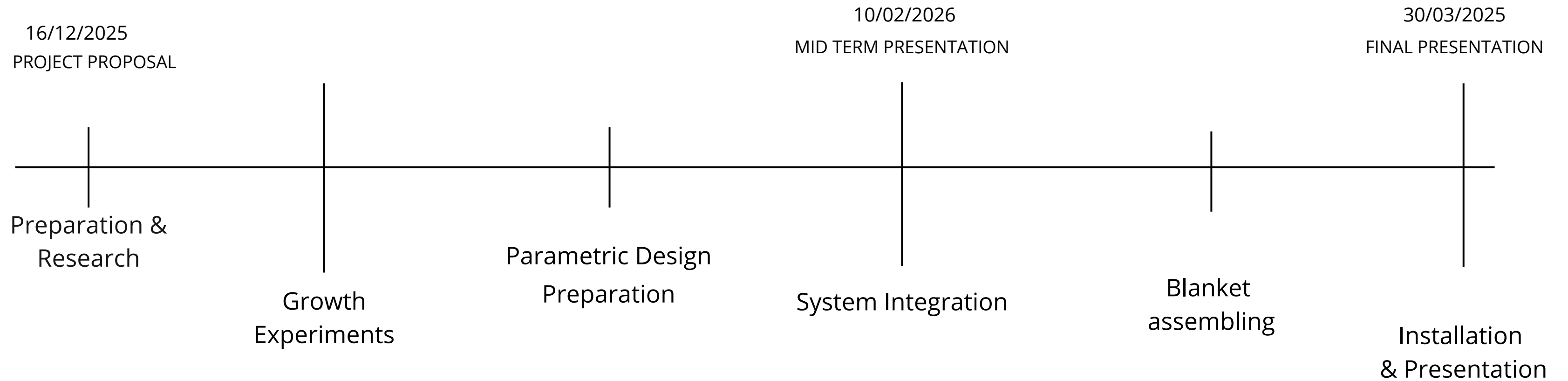
# State of the art

*interactive*



1. The orchid beauty, 2023 - Volkan Dincer
2. A Fabric that Remembers - Laura Devendorf
3. Of Work And Waves - Mika Satomi & Hannah Perner-Wilson

# Timeline



Research growth & biomaterials  
Build grow box, test settings  
Experiment with sensors & sound

Grow roots under different conditions  
Involve participants  
Record root growth sounds

Form studies Grasshopper  
Parametric molds  
Prototype via laser cut / 3D print

Arduino sensors  
Connect to TouchDesigner

Connect sensor & roots  
Assemble root squares

Prepare Installation  
Final Set-up



THANK YOU