



FABRICADEMY
textile and technology academy

IBERO
PUEBLA

MID TERM PRESENTATIONS

LAURA MUTH



OCEAN BREATH

WHY

Turning necessity
into opportunity

WHAT

Wearables
+ Biofabrication

WHO

Laura Muth

WHEN

January – March
2026

WHERE

MEXICO
IBERO / IDIT



WHY





SARGA

SSUM





WHAT

THE PROJECT

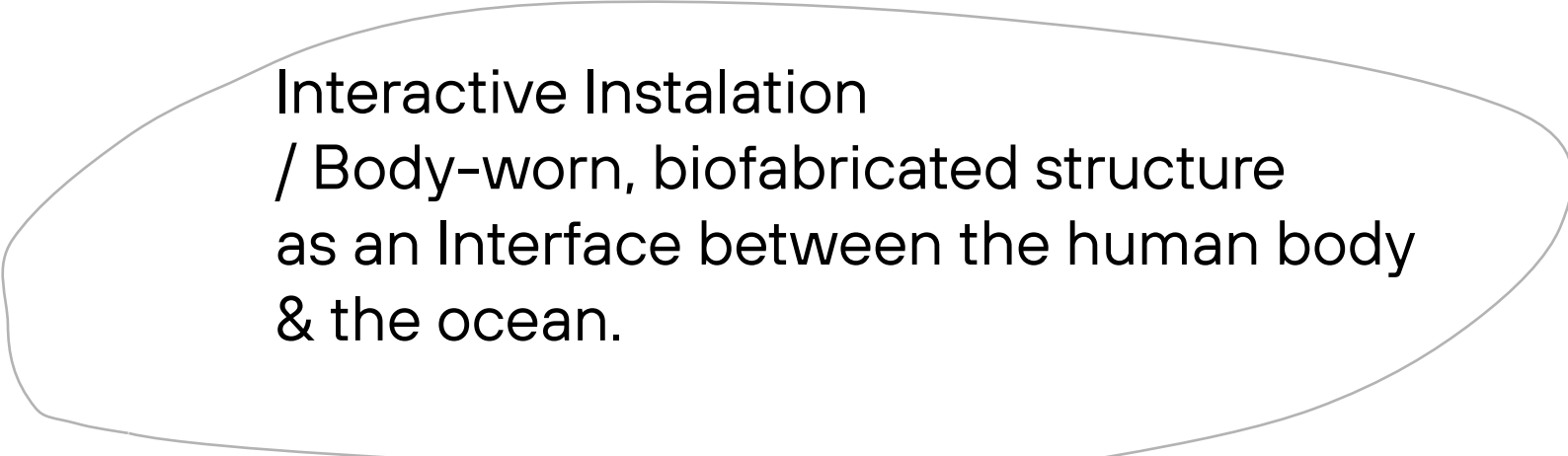
Questions:

how we relate to environmental crises when they are no longer distant, but physically present on our bodies.

THE PROJECT

Questions:

how we relate to environmental crises when they are no longer distant, but physically present on our bodies.



Interactive Instalation
/ Body-worn, biofabricated structure
as an Interface between the human body
& the ocean.

THE PROJECT

Questions:

how we relate to environmental crises when they are no longer distant, but physically present on our bodies.

Interactive Instalation
/ Body-worn, biofabricated structure
as an Interface between the human body
& the ocean.

The wearable reacts subtly to bodily data
- breath

Translating internal rhythms:
- gentle motion

THE PROJECT

Questions:

how we relate to environmental crises when they are no longer distant, but physically present on our bodies.

Interactive Instalation

/ Body-worn, biofabricated structure as an Interface between the human body & the ocean.

Sargassum exists in a state of contradiction:

it is both:
pollutant & resource,
excess & opportunity.

The wearable reacts subtly to bodily data

- breath, heartbeat, or movement

Translating internal rhythms:

- gentle motion, texture shifts, or light.

THE PROJECT

Questions:

how we relate to environmental crises when they are no longer distant, but physically present on our bodies.

Interactive Instalation

/ Body-worn, biofabricated structure
as an Interface between the human body
& the ocean.

Sargassum exists in a state of contradiction:
it is both:
pollutant & resource,
excess & opportunity.

The softness, fragility, & organic irregularities
of the biofabricated seaweed
//
The precision of sensors, code,
& digital fabrication
=
creating a dialogue between
nature & technology.

The wearable reacts subtly to bodily data
- breath, heartbeat, or movement

Translating internal rhythms:
- gentle motion, texture shifts, or light.

THE PROJECT

Questions:

how we relate to environmental crises when they are no longer distant, but physically present on our bodies.

Interactive Instalation

/ Body-worn, biofabricated structure as an Interface between the human body & the ocean.

Sargassum exists in a state of contradiction: it is both:
pollutant & resource,
excess & opportunity.

The softness, fragility, & organic irregularities of the biofabricated seaweed
//
The precision of sensors, code, & digital fabrication
=
creating a dialogue between nature & technology.

The wearable reacts subtly to bodily data
- breath, heartbeat, or movement

Translating internal rhythms:
- gentle motion, texture shifts, or light.

Wearable Artifact:
Invasive presence as a material for reflection, care & regeneration.

THE PROJECT

Questions:

how we relate to environmental crises when they are no longer distant, but physically present on our bodies.

Interactive Instalation

/ Body-worn, biofabricated structure
as an Interface between the human body
& the ocean.

Sargassum exists in a state of contradiction:
it is both:
pollutant & resource,
excess & opportunity.

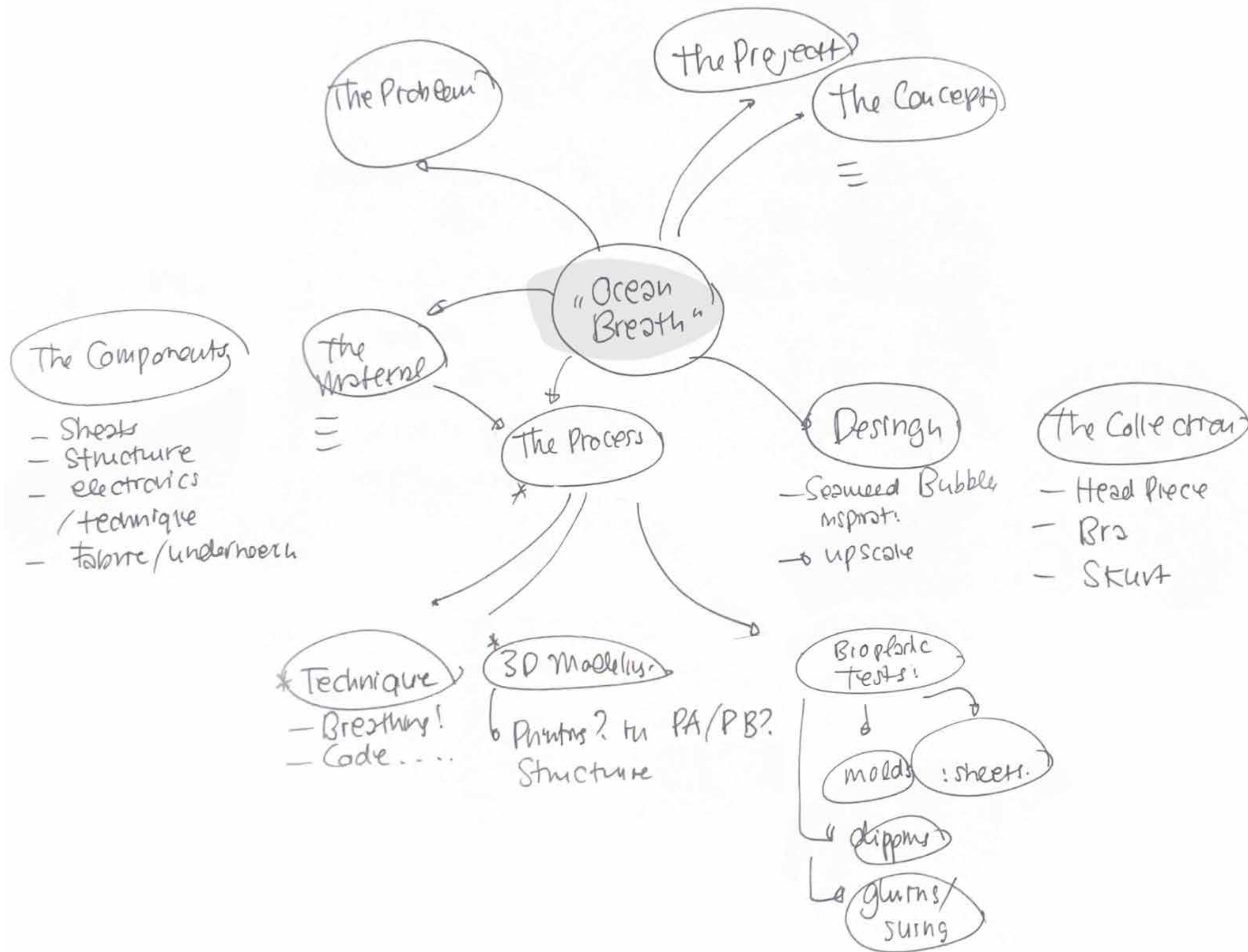
The softness, fragility, & organic irregularities
of the biofabricated seaweed
//
The precision of sensors, code,
& digital fabrication
=
creating a dialogue between
nature & technology.

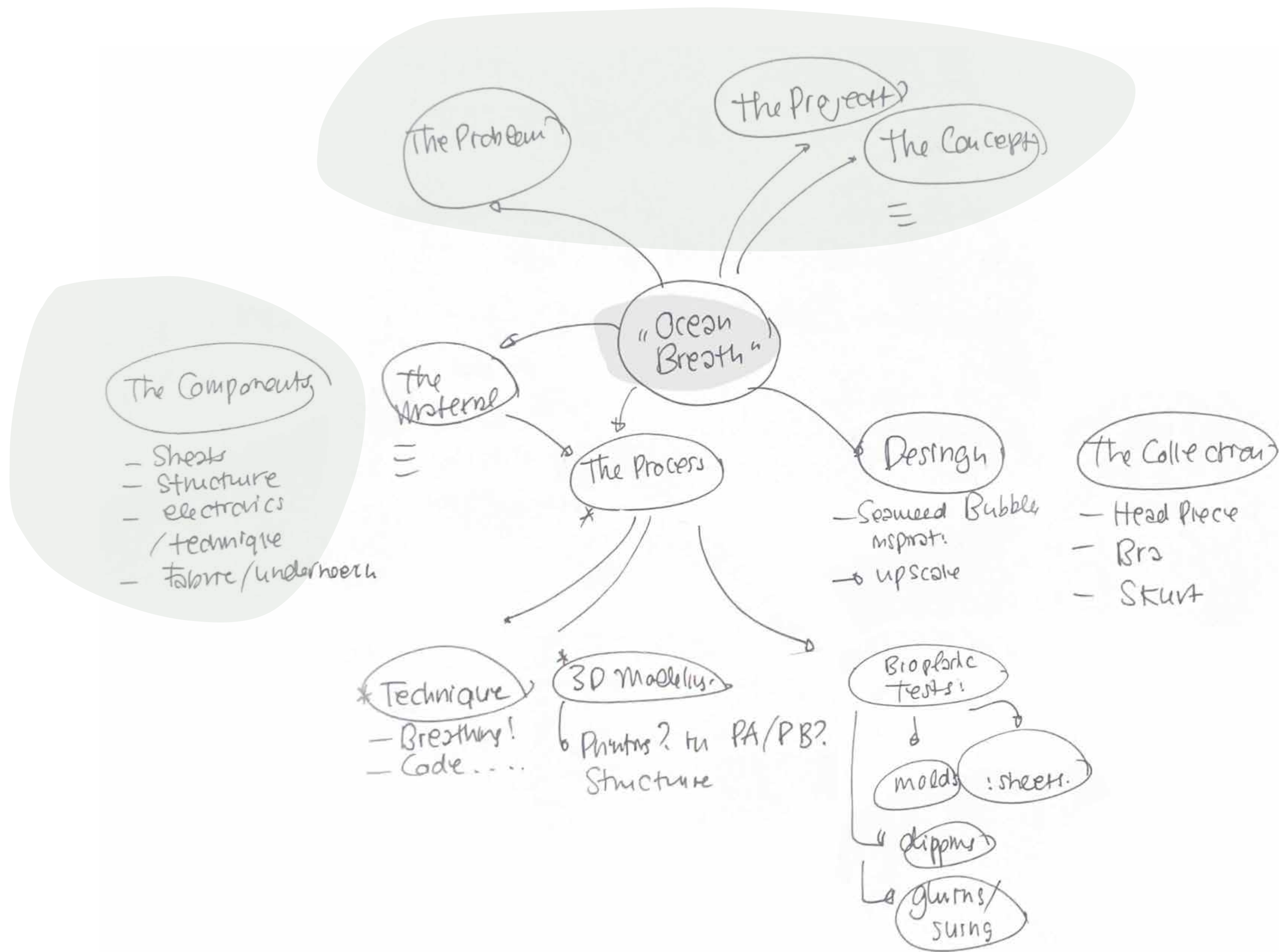
The wearable reacts subtly to bodily data
- breath, heartbeat, or movement

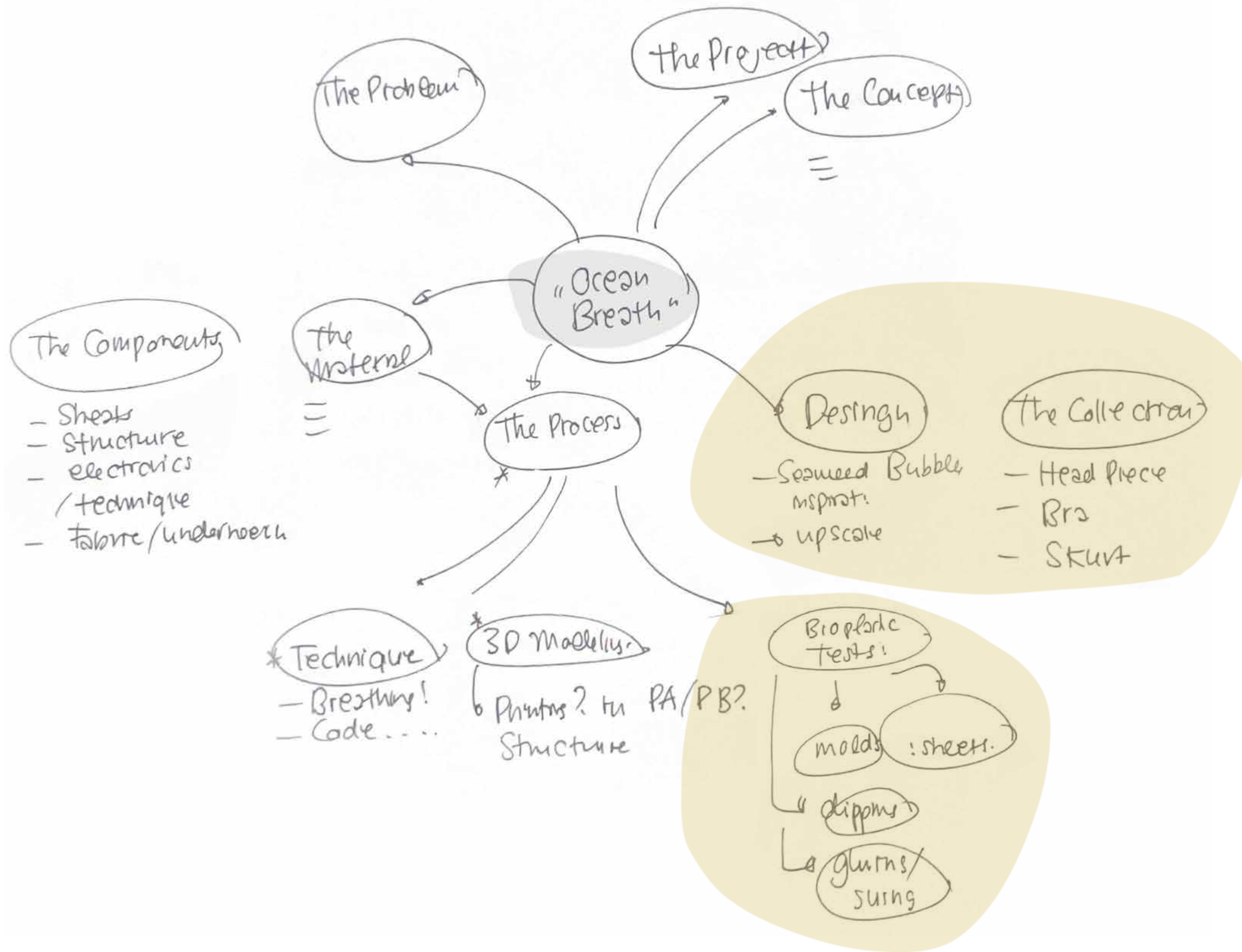
Translating internal rhythms:
- gentle motion, texture shifts, or light.


Wearable Artifact:
Invasive presence as a material for reflection,
care, & regeneration.

conclude:
The project exists in the space between
care & discomfort
technology & ecologie
problem & potential.

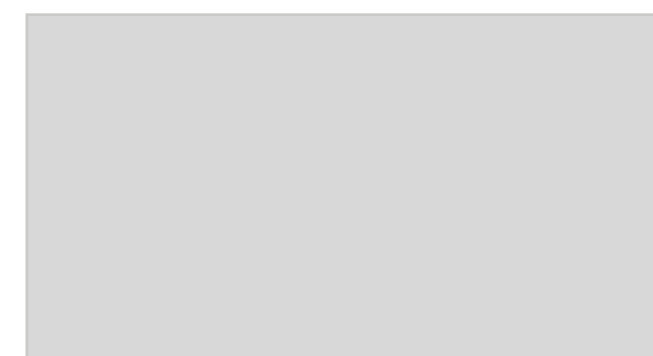
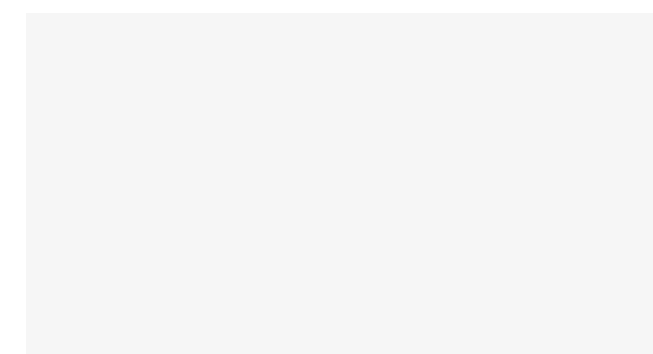


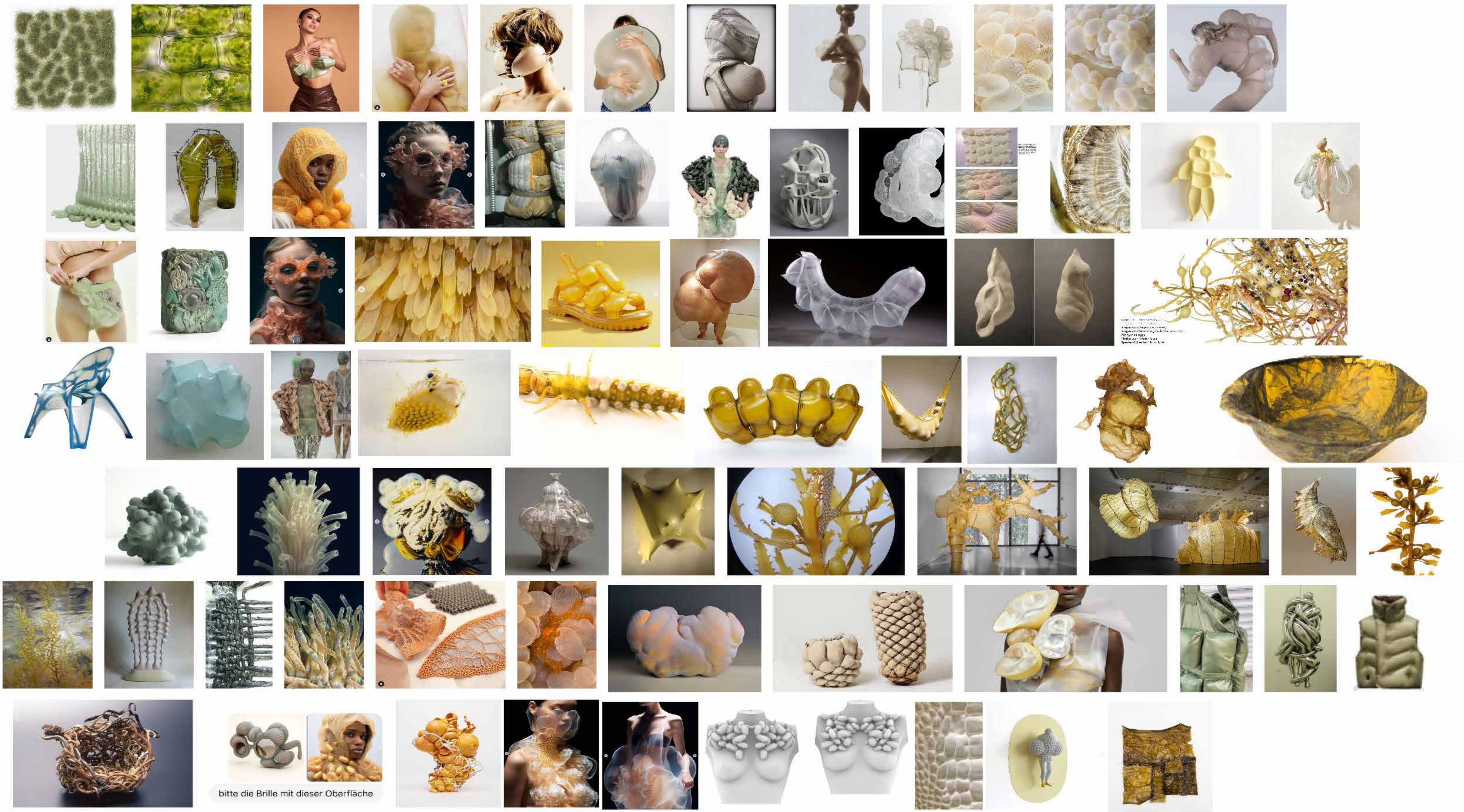






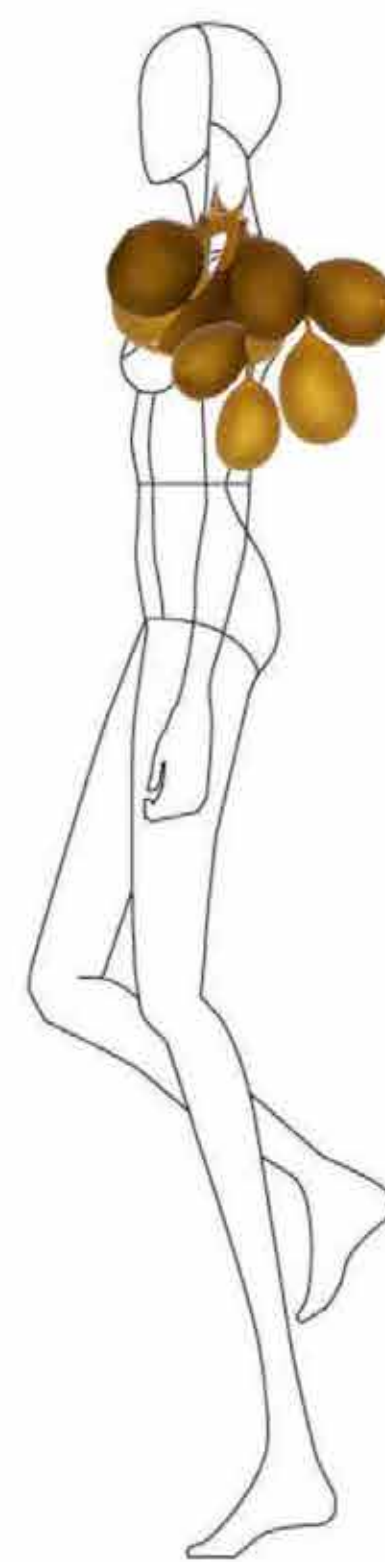
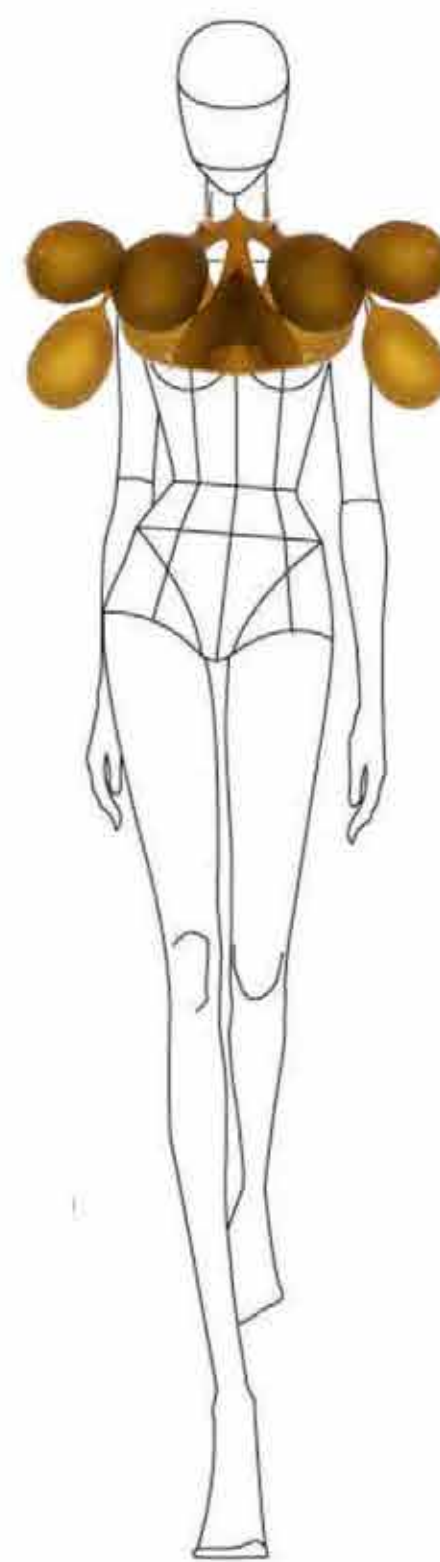
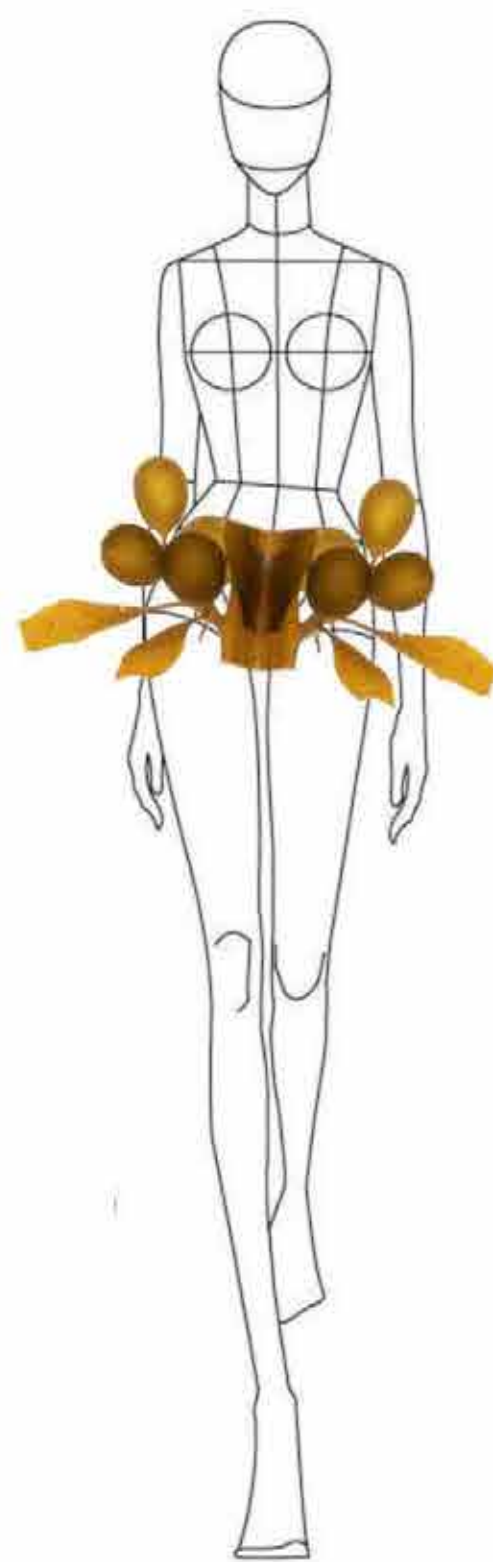
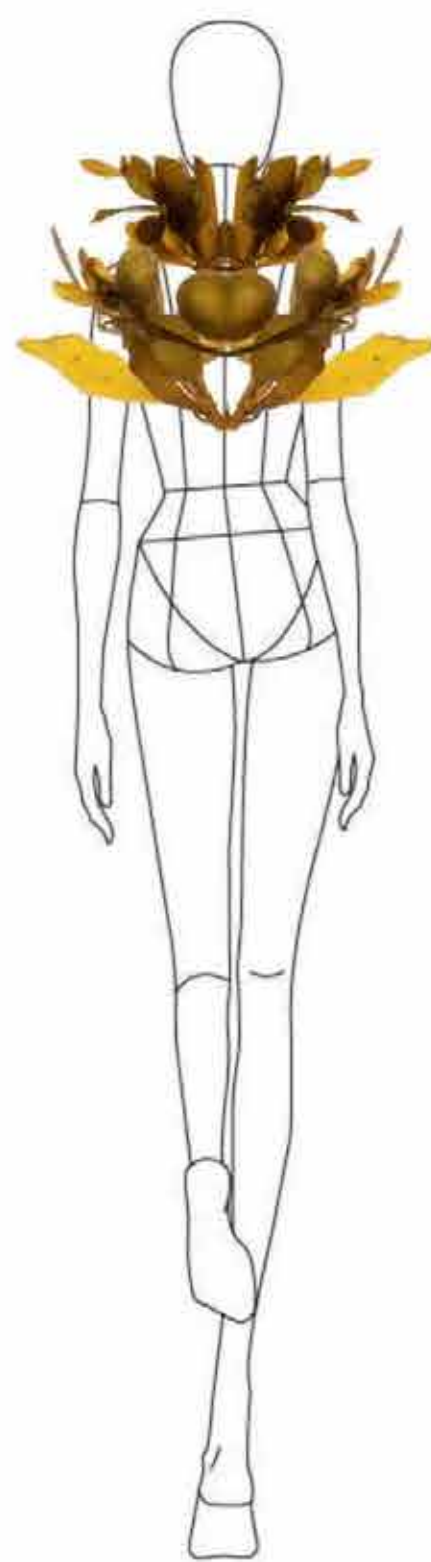
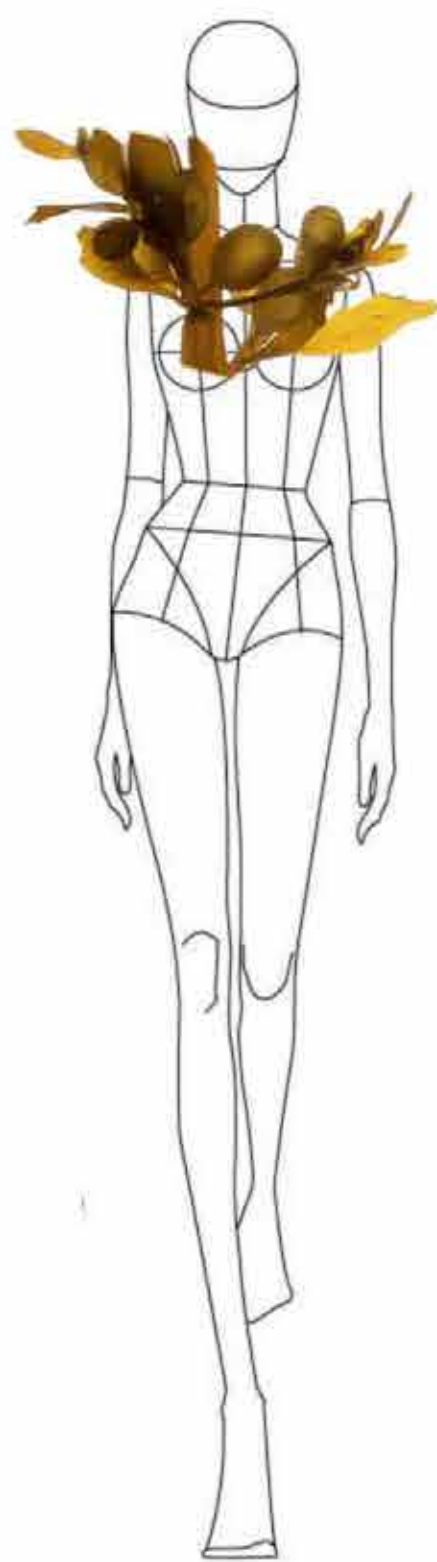
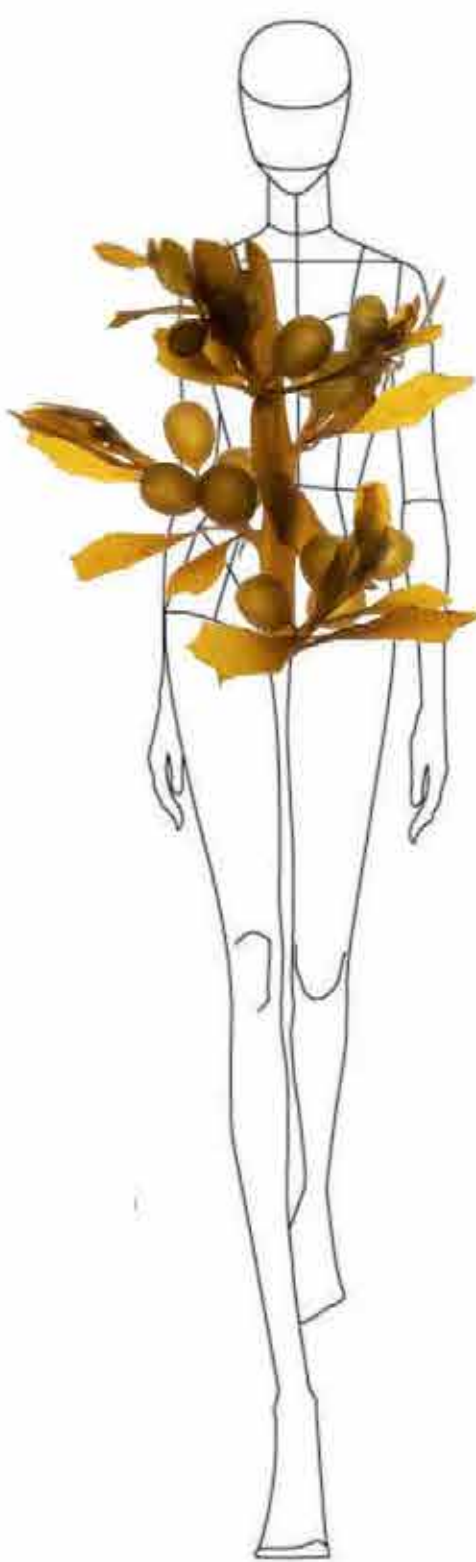
DESIGN

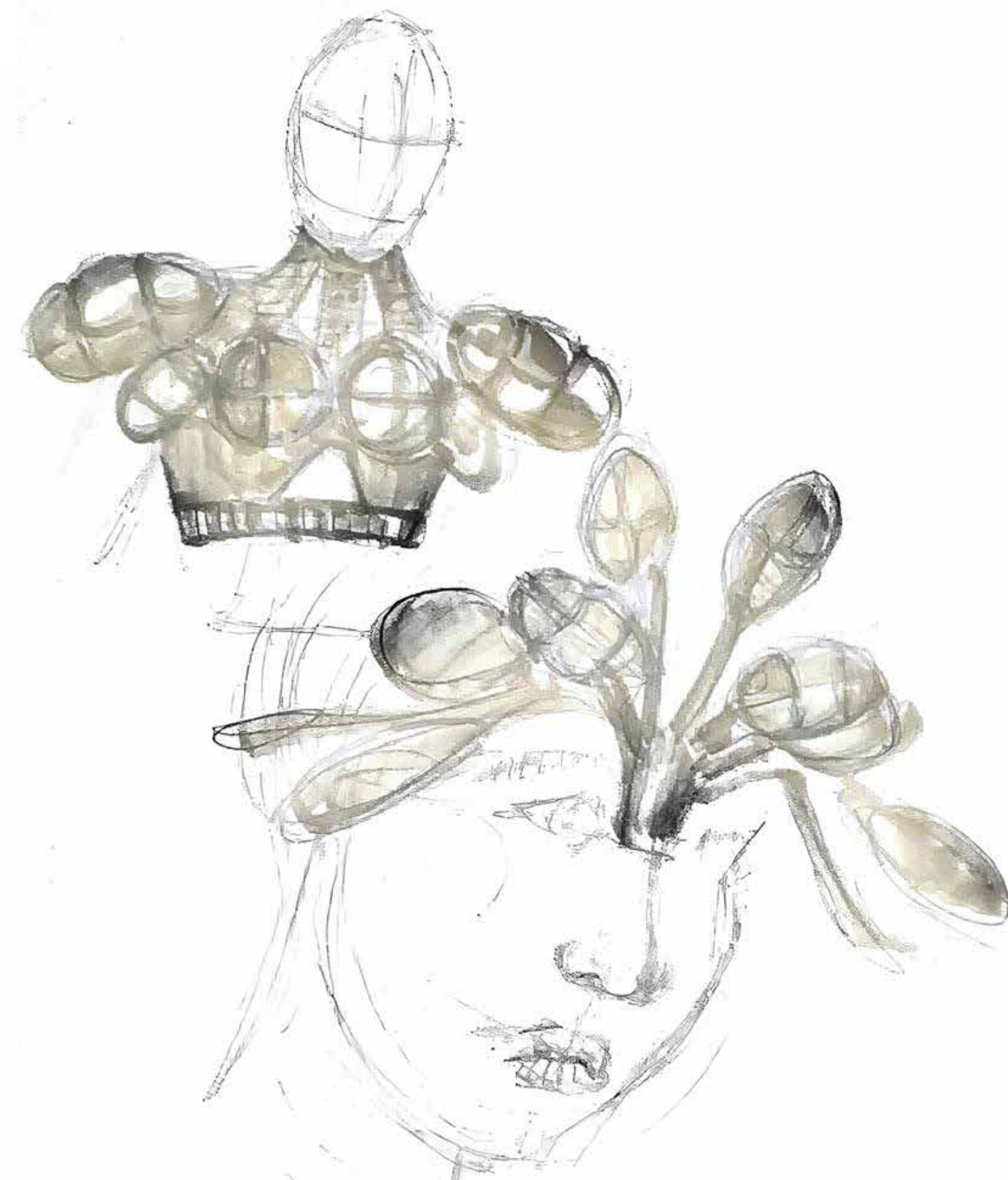
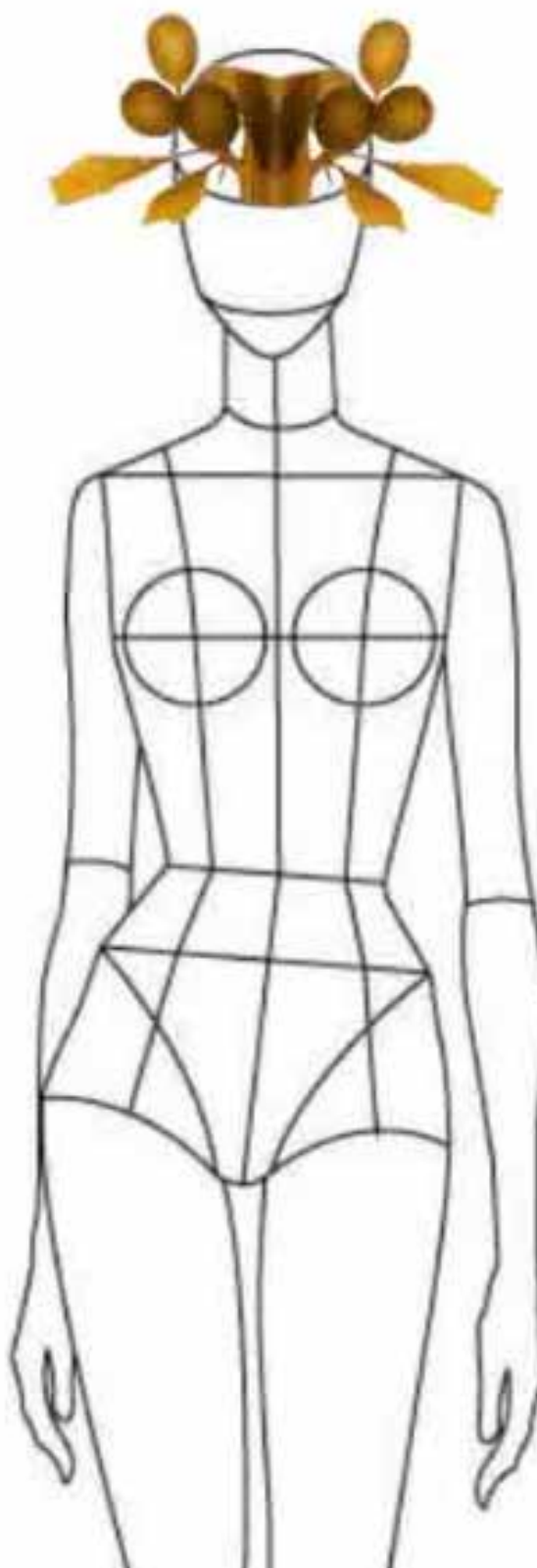
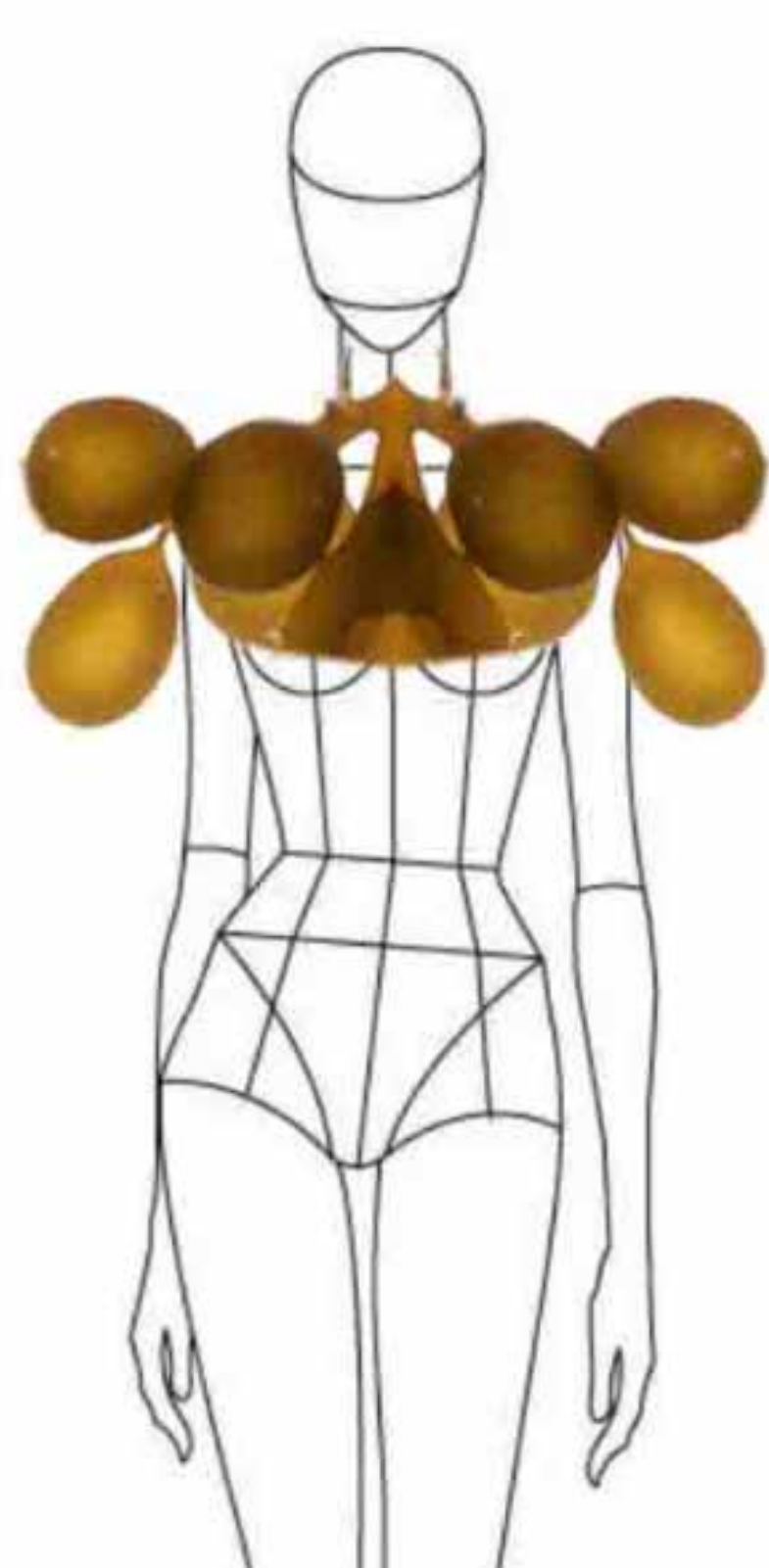


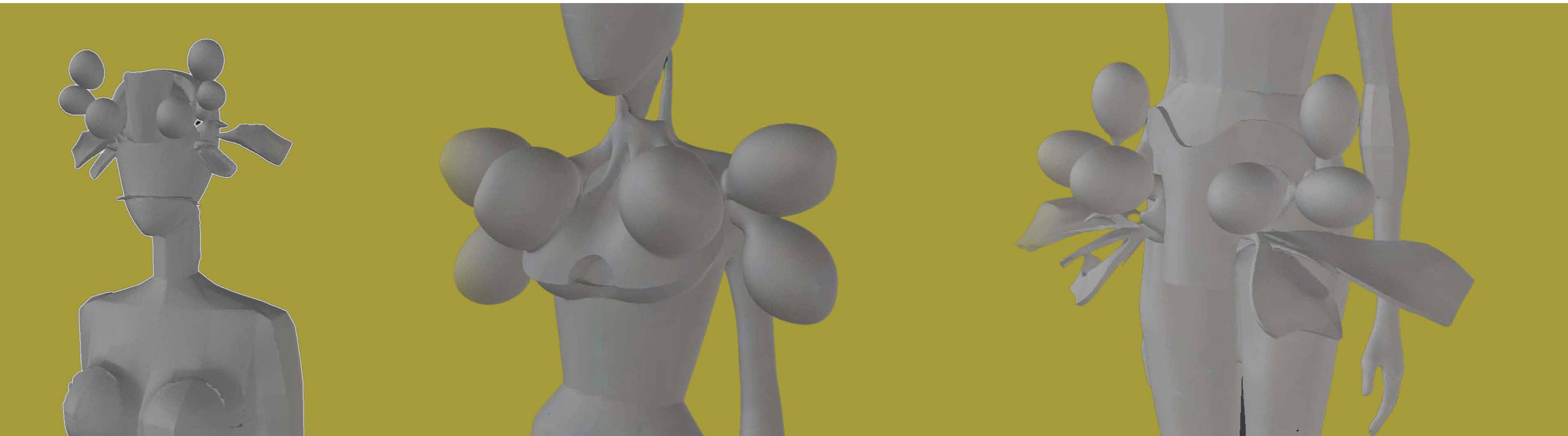


bitte die Brille mit dieser Oberfläche







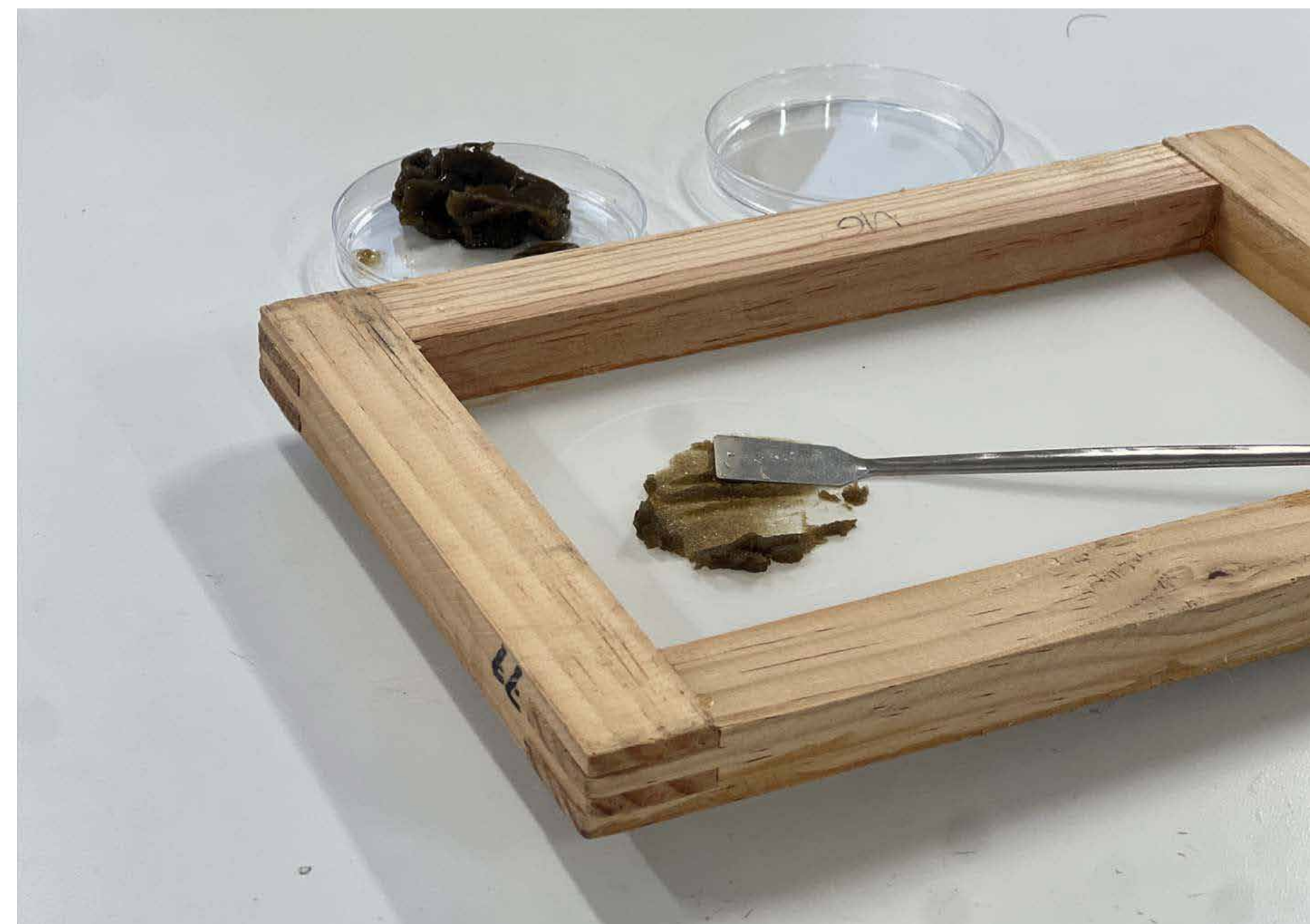


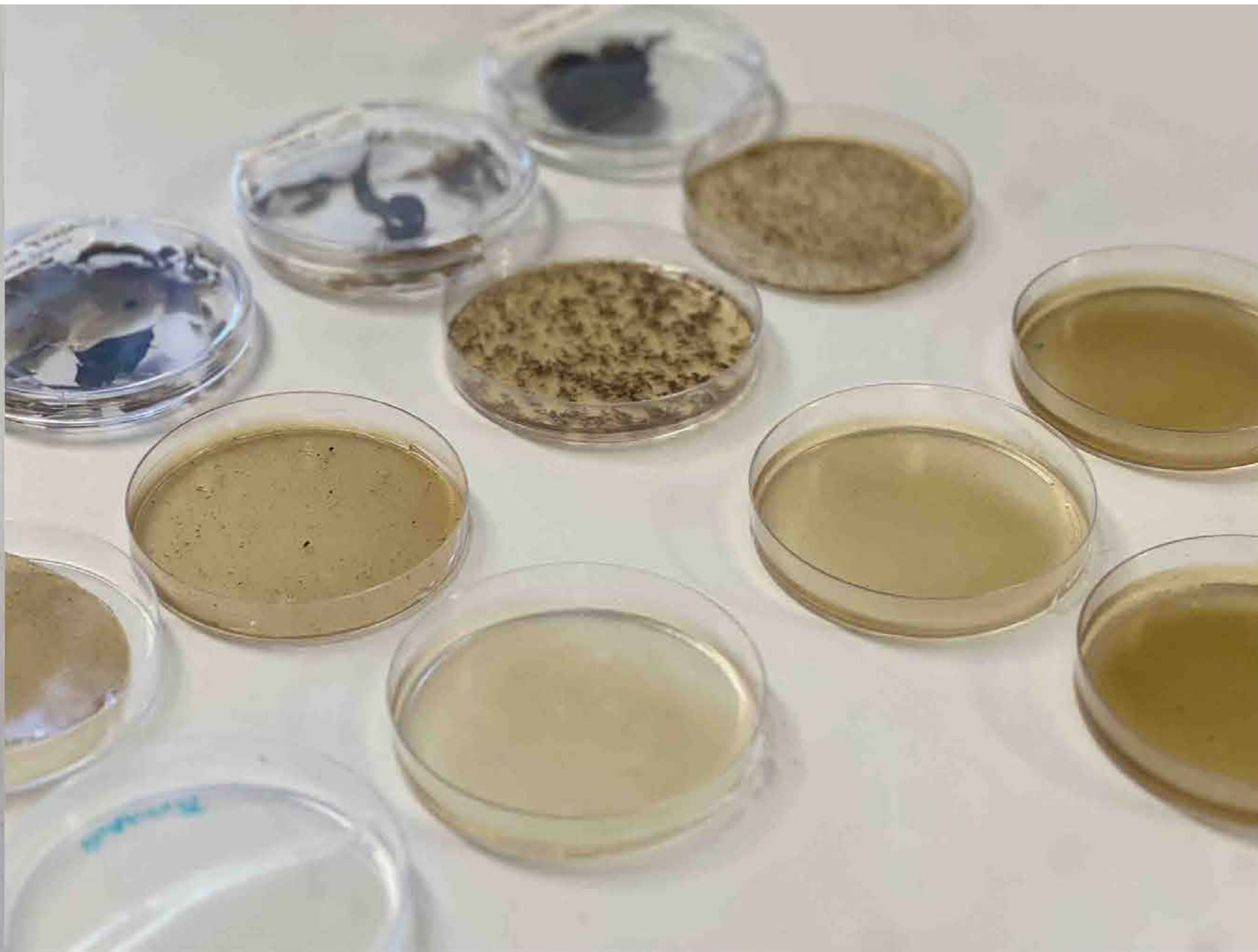


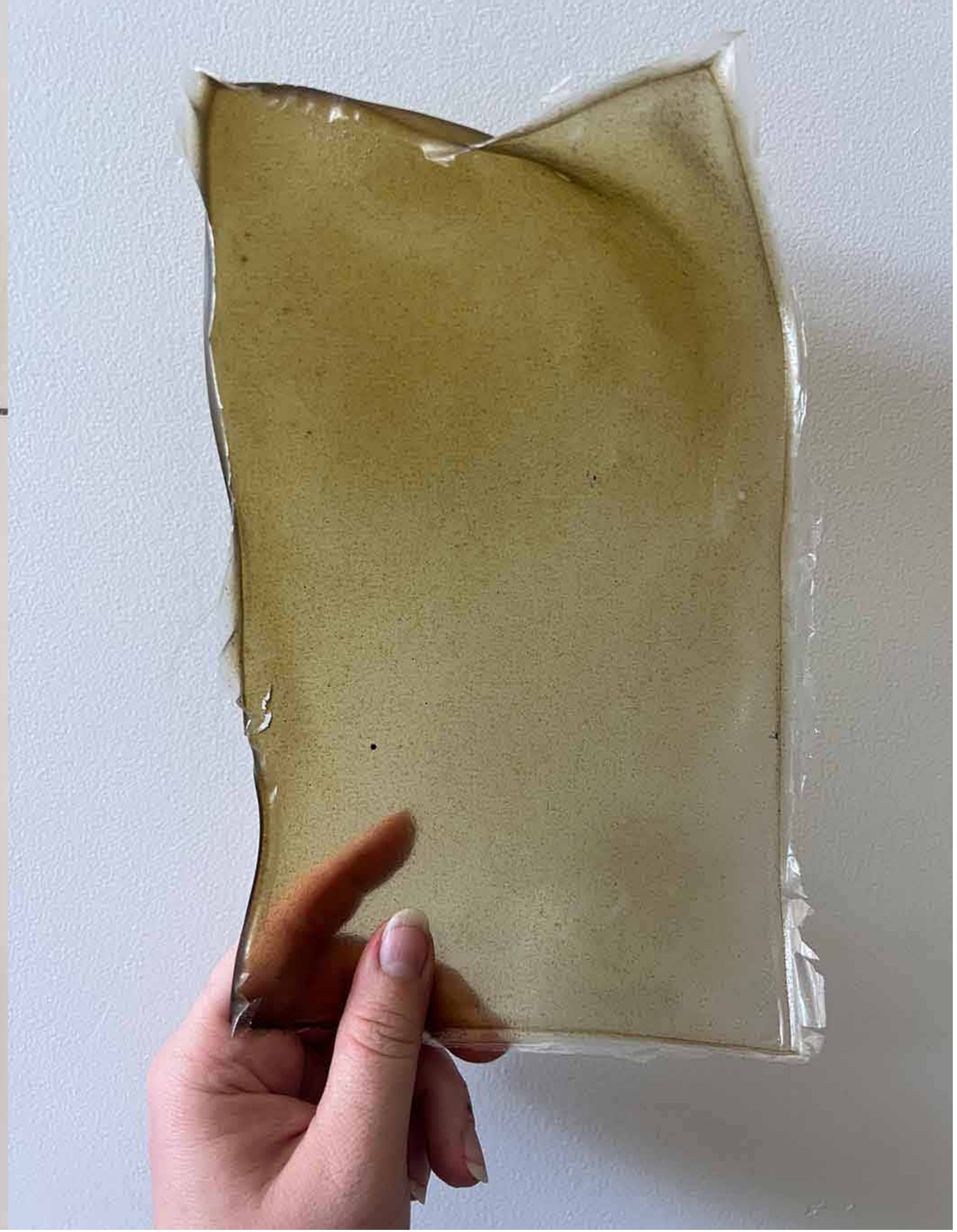
MATERIAL

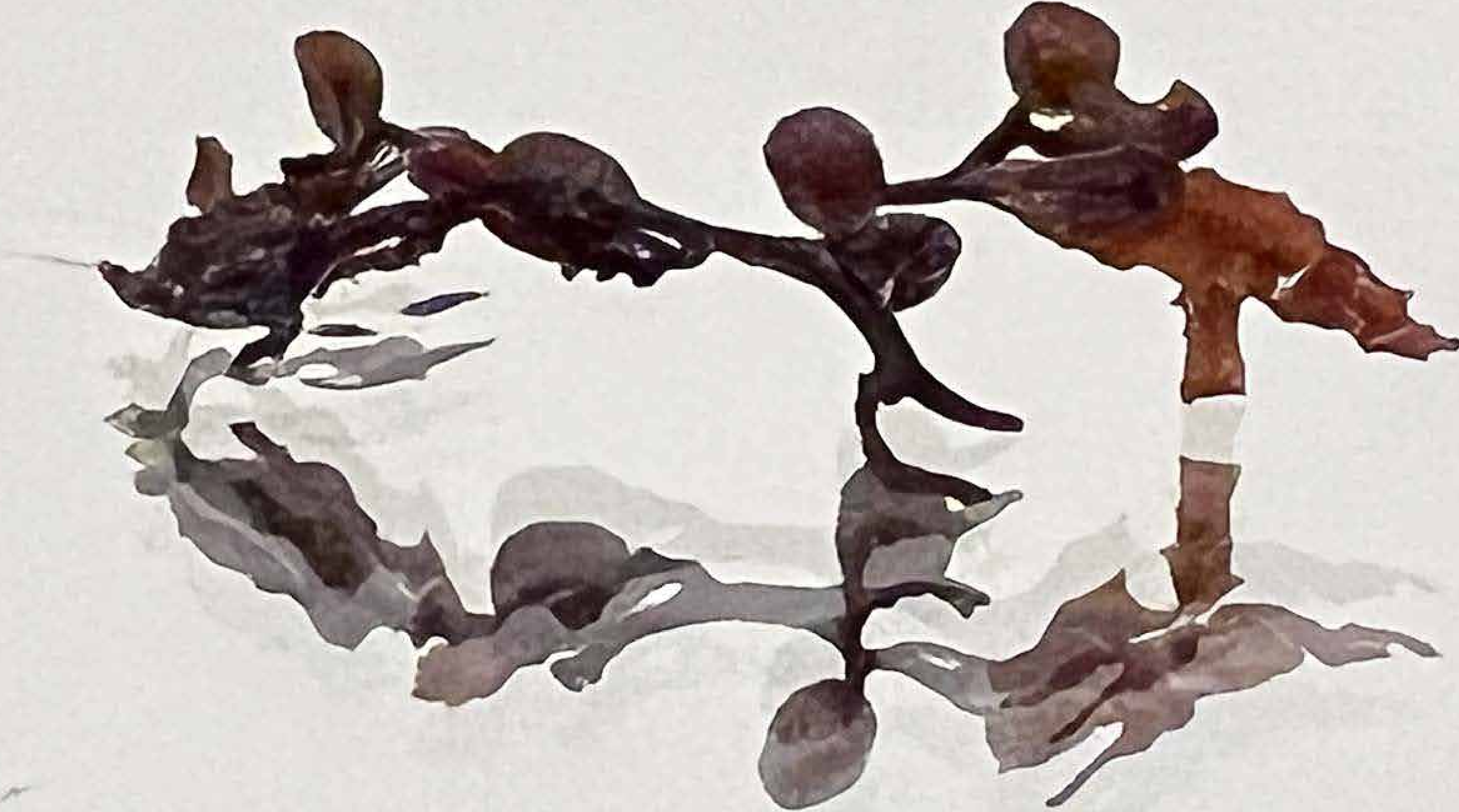




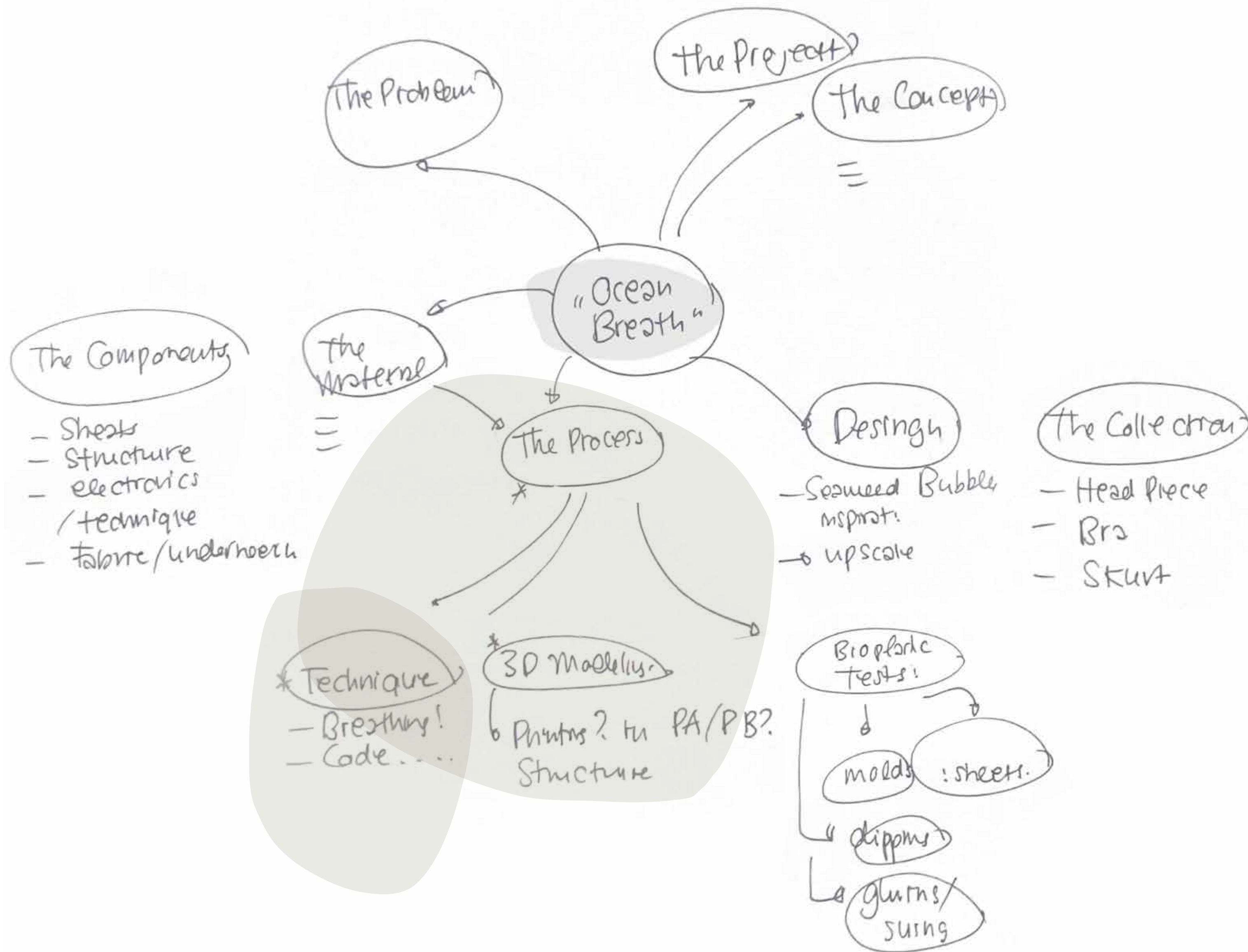














FABRICADEMY
textile and technology academy

IBERO
PUEBLA

MID TERM PRESENTATIONS

LAURA MUTH