

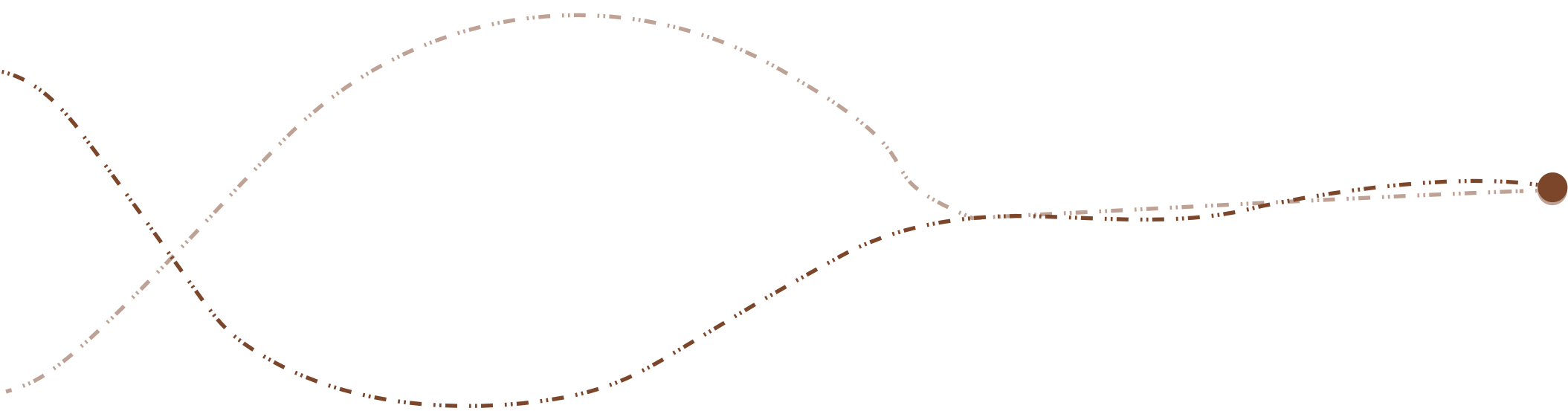


RESURRECT

Worn. Then Inhabited.

Simone Kiswani

“The end of use is not the end of life.”





“Everything continues, whether we design it to or not.”

But maybe we can decide for it how to continue?



Motive

Yearly, over 8 million tons of plastic pollute the ocean, up to 35% traced to textile/ornamental fashion industry

Increasing
Coral bleaching
risk up to 20 times

What would it take us to
shift from the center?





Resurrect

A **ritual-based wearable project** that questions the human hierarchy over nature.

Worn. Then Inhabited.

Exploring a **multi-life design** strategy through:

Terracotta modules that reinterpret **ornamental** fashion through a sustainable lens, which transition into a second life as **marine habitat**.



The Ritual

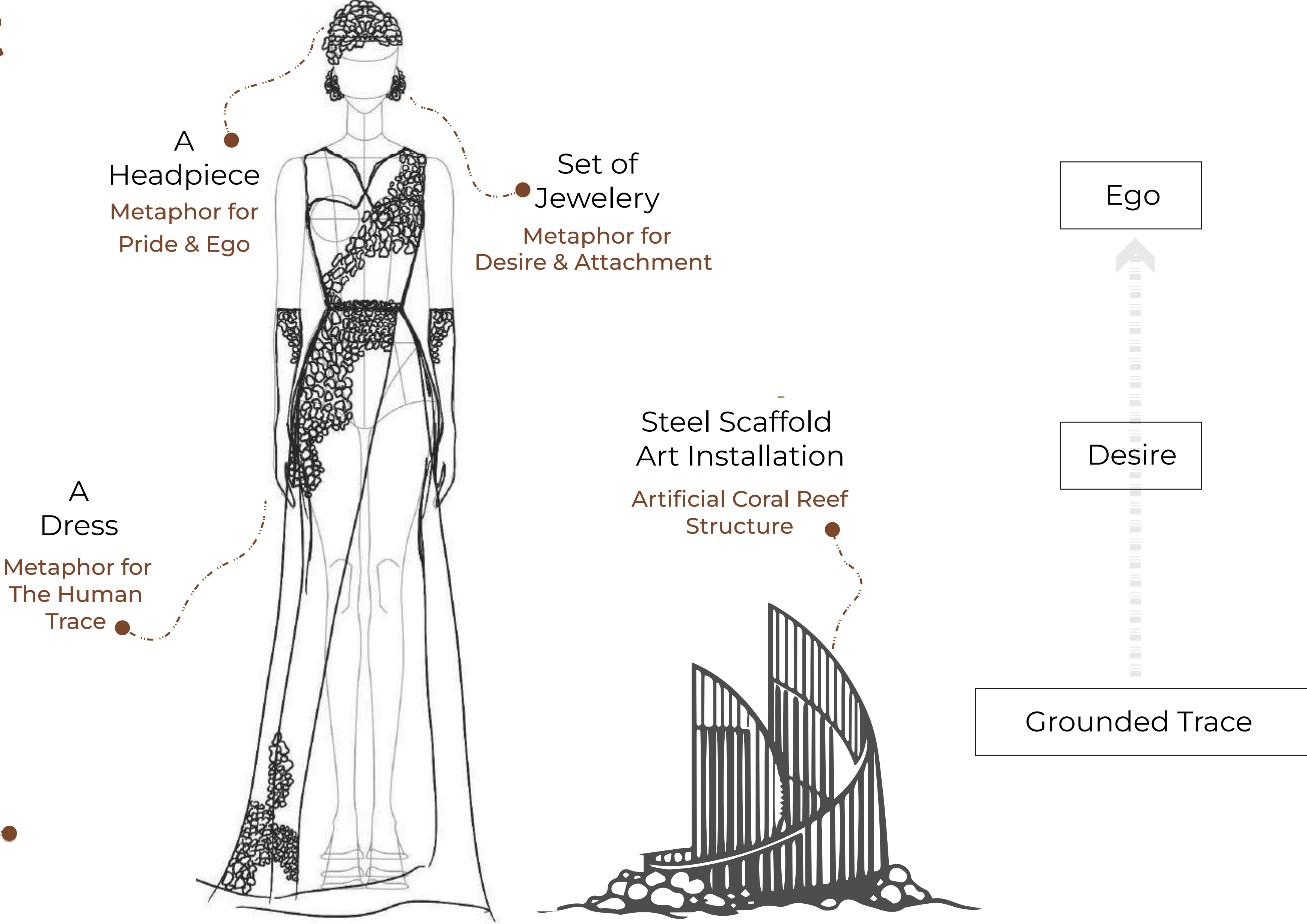
A symbolic act of disassembly

The clay modules composing the structure of the garment are **removed from the body** and reassembled underwater onto a steel scaffold, transforming into an artificial reef habitat.



The Project

A token to nature



Research Synthesis

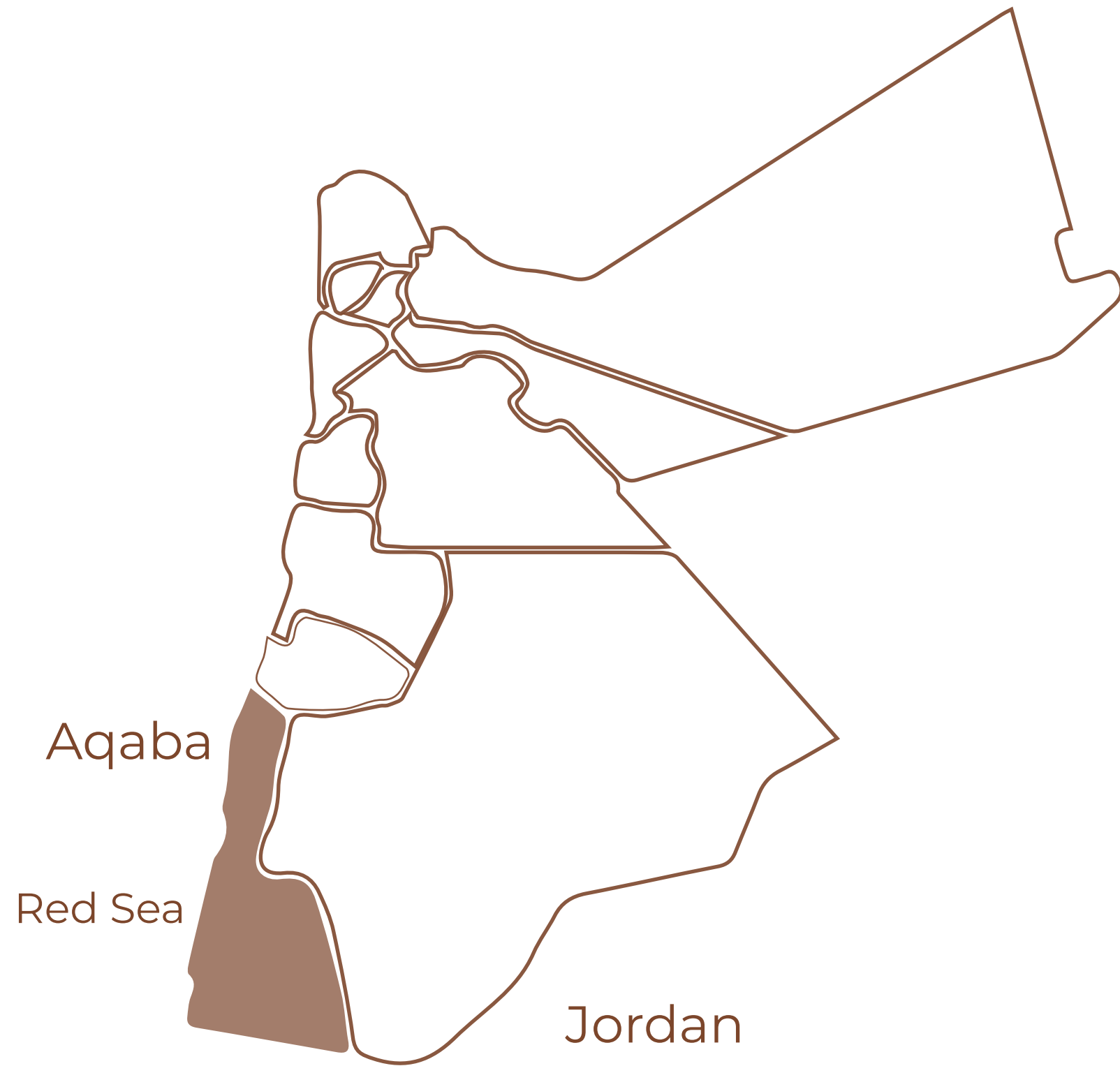
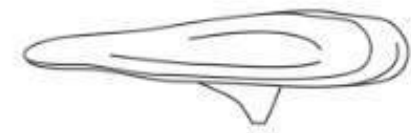
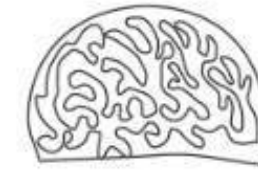


PLATE (PL)



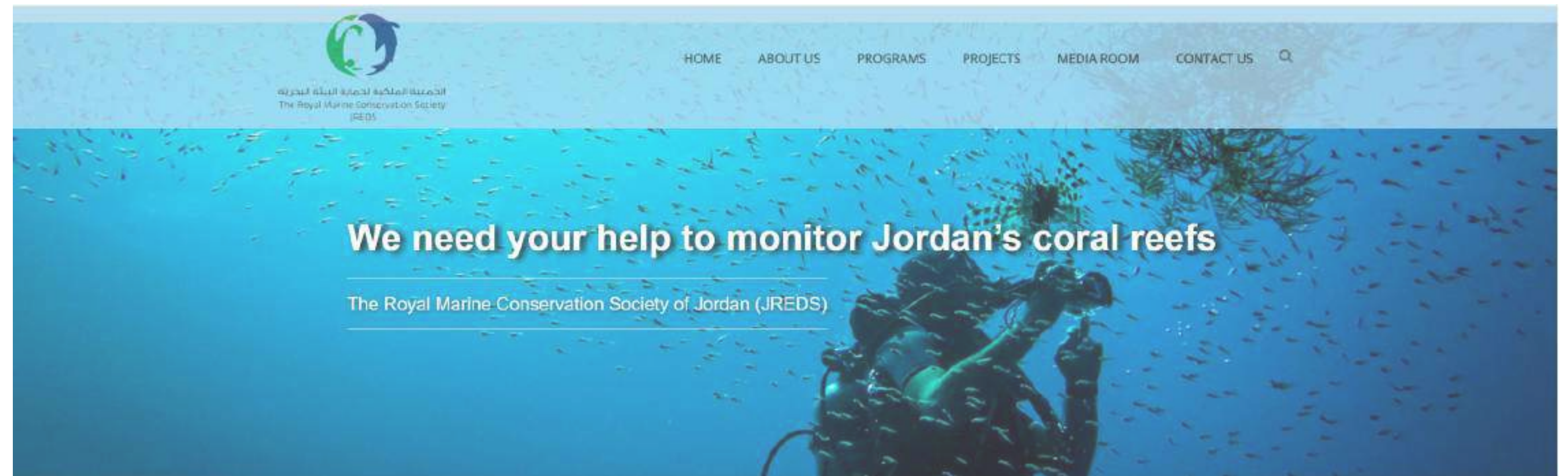
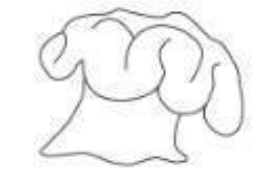
BOULDER (BO)



BRANCHING (BR)



SOFT (SO)



Reference: JREDS through Coral Watch

Research Synthesis

Clay can host life the way coral does

Coral Porosity:

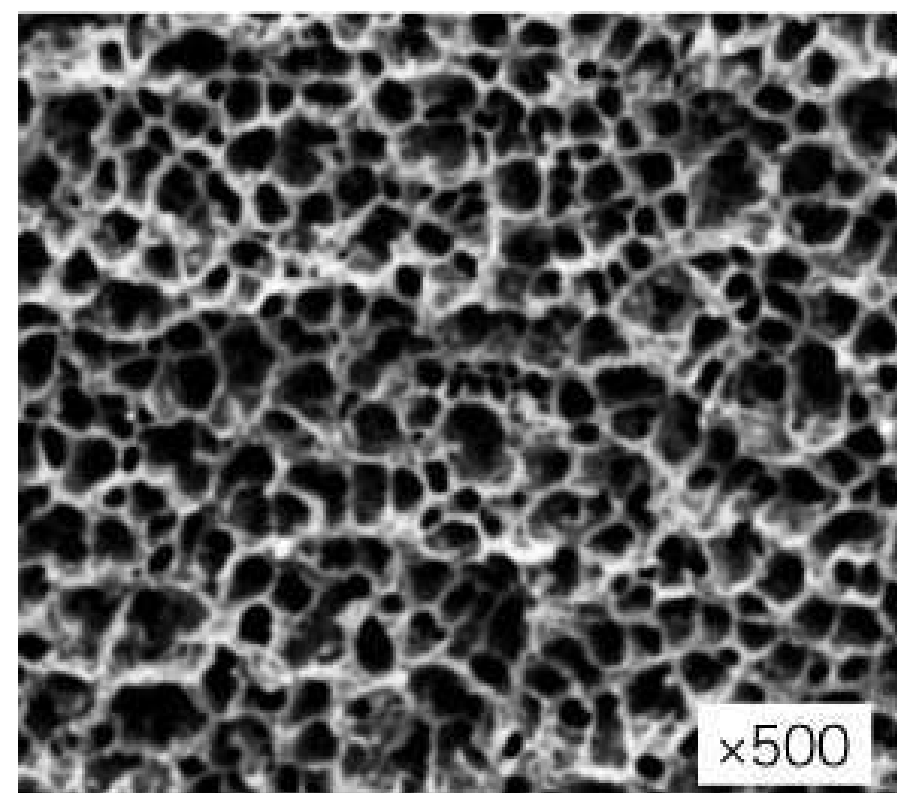
- Micro-pores (microns–mm)
- Macro cavities (mm–cm)
- Surface roughness

Clay porosity (controllable):

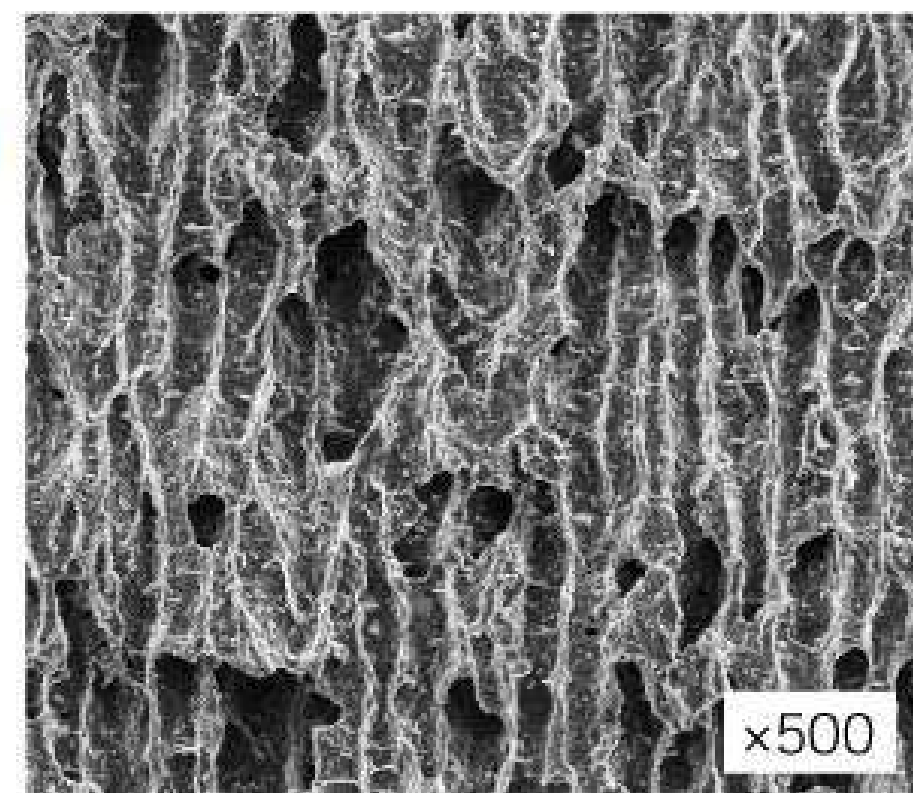
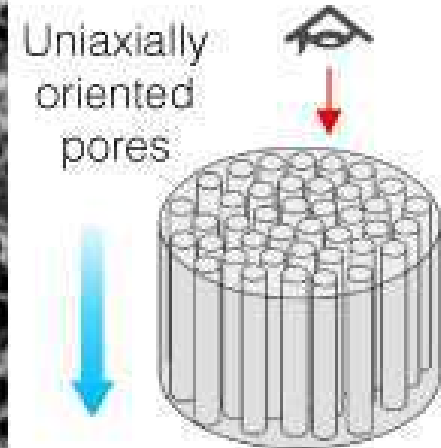
- Clay body choice
- Additives (sand, grog, sawdust)
- Firing temperature

This allows:

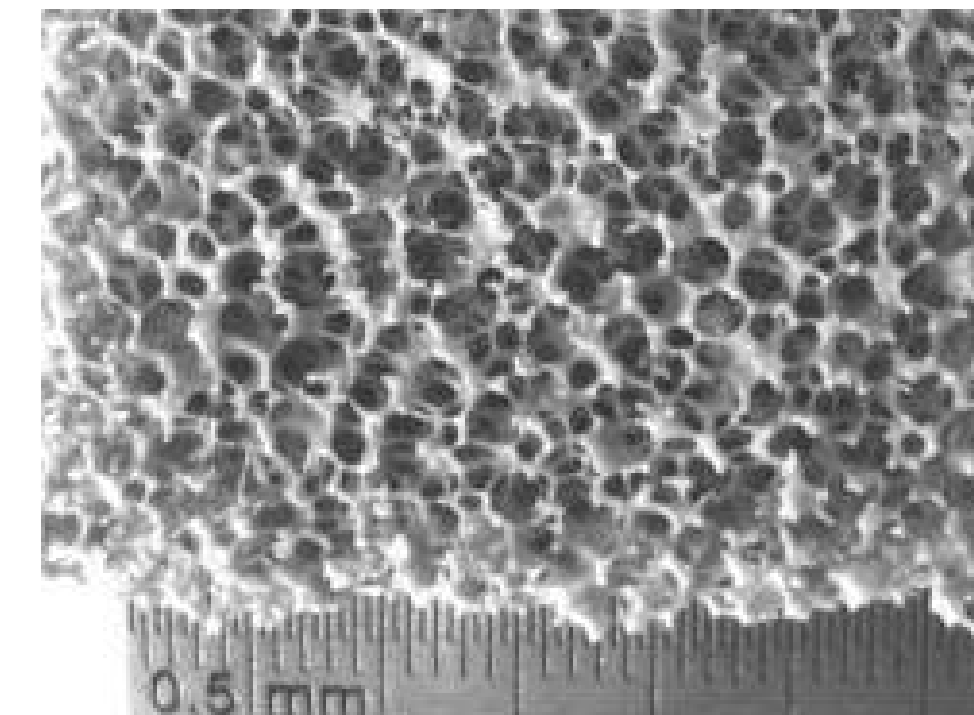
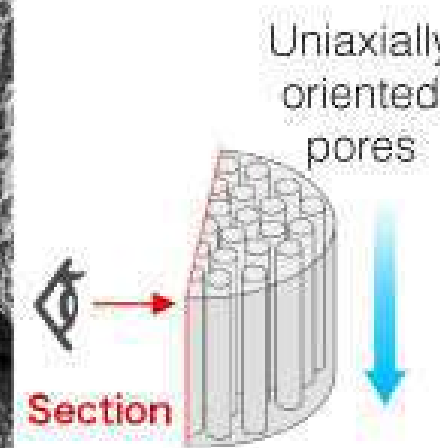
- Water flow
- Algae attachment
- Micro-organism shelter
- Larval settlement



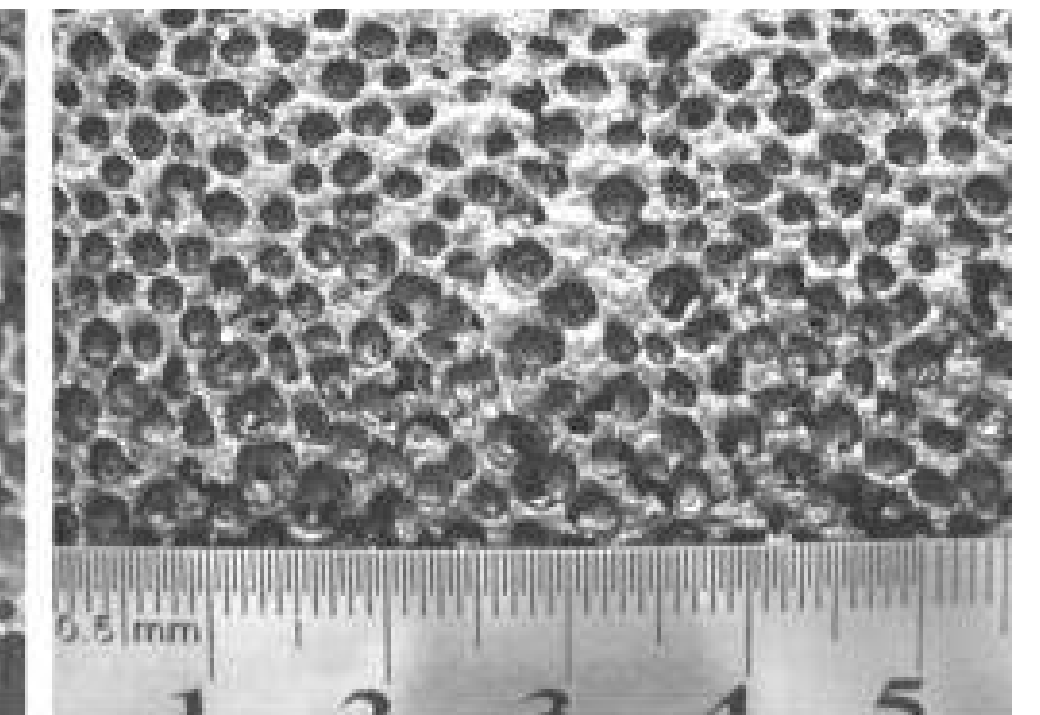
SEM image:
planar structural
view



SEM image:
vertical structural
view



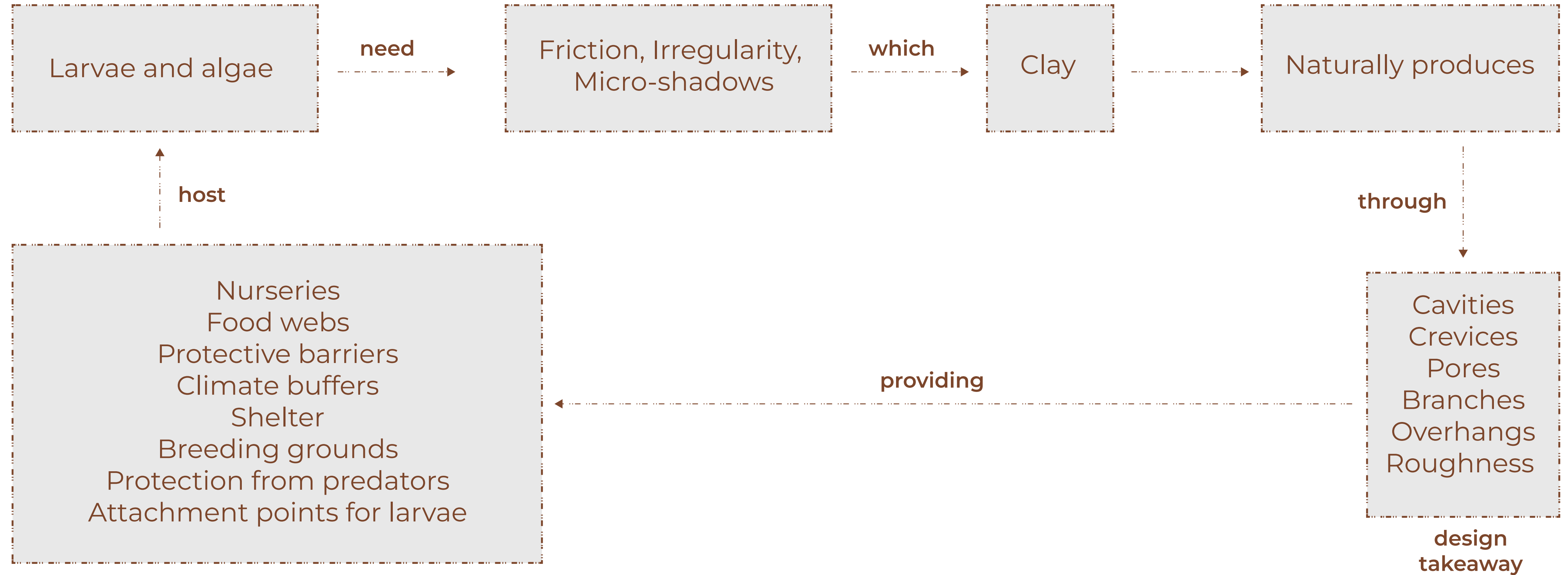
(a)



(b)

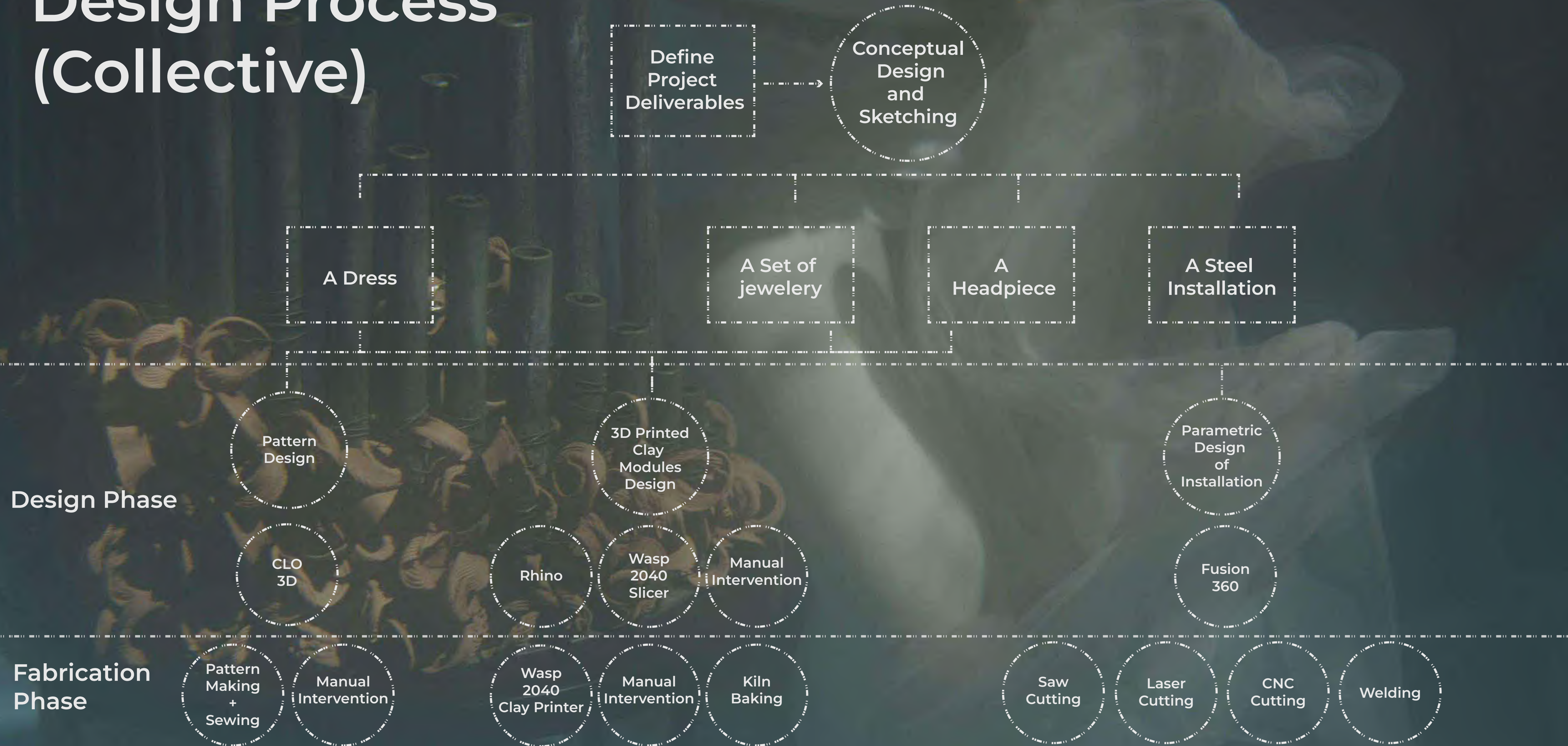
Full article: Macro-porous
processing and properties

Geometry Development

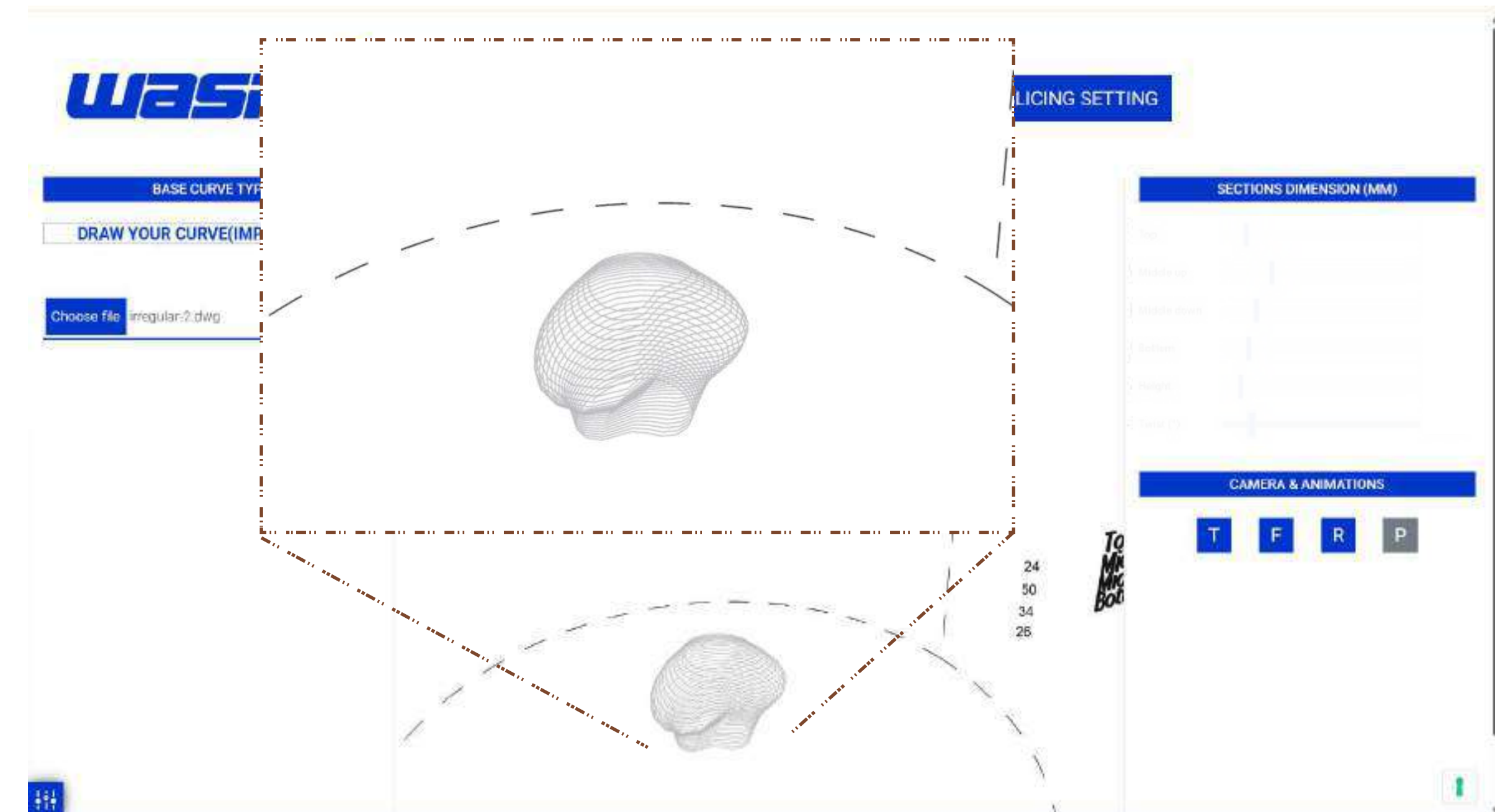
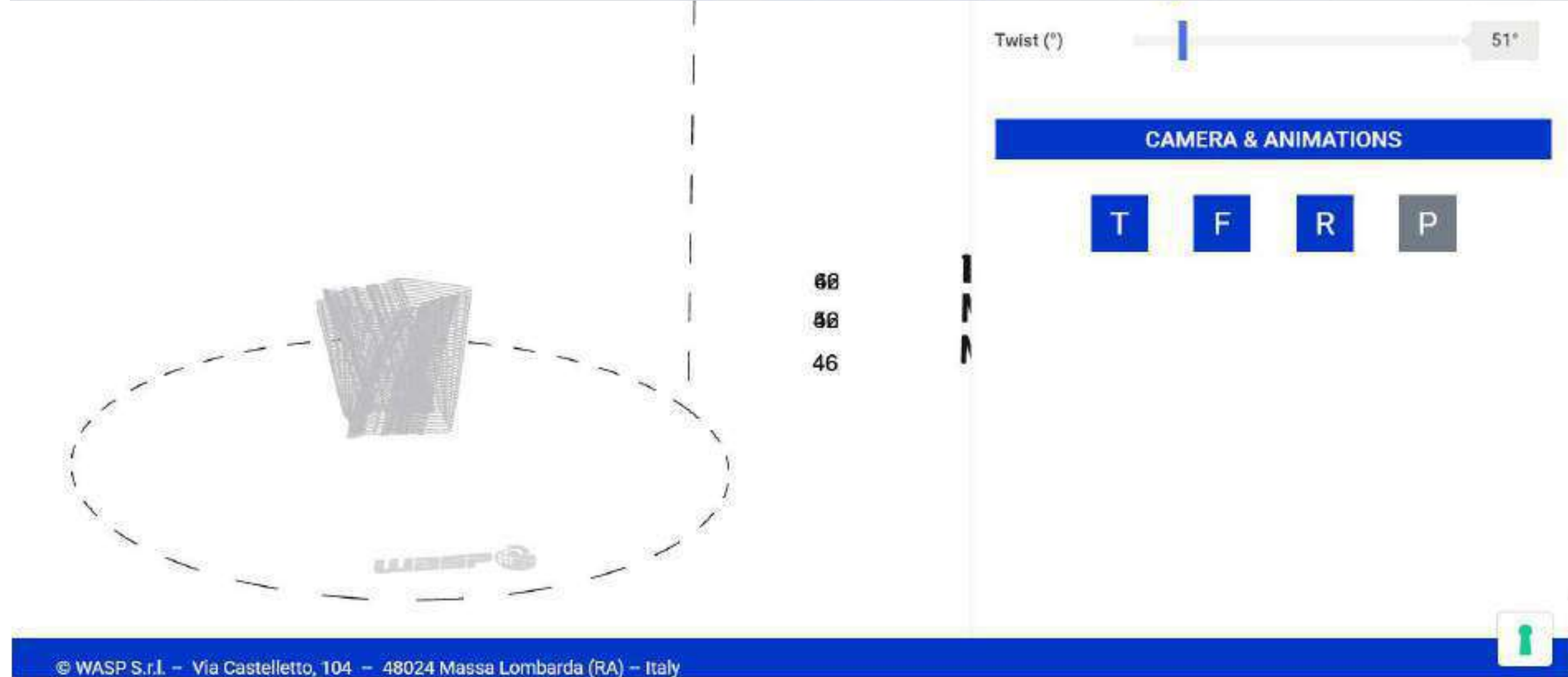
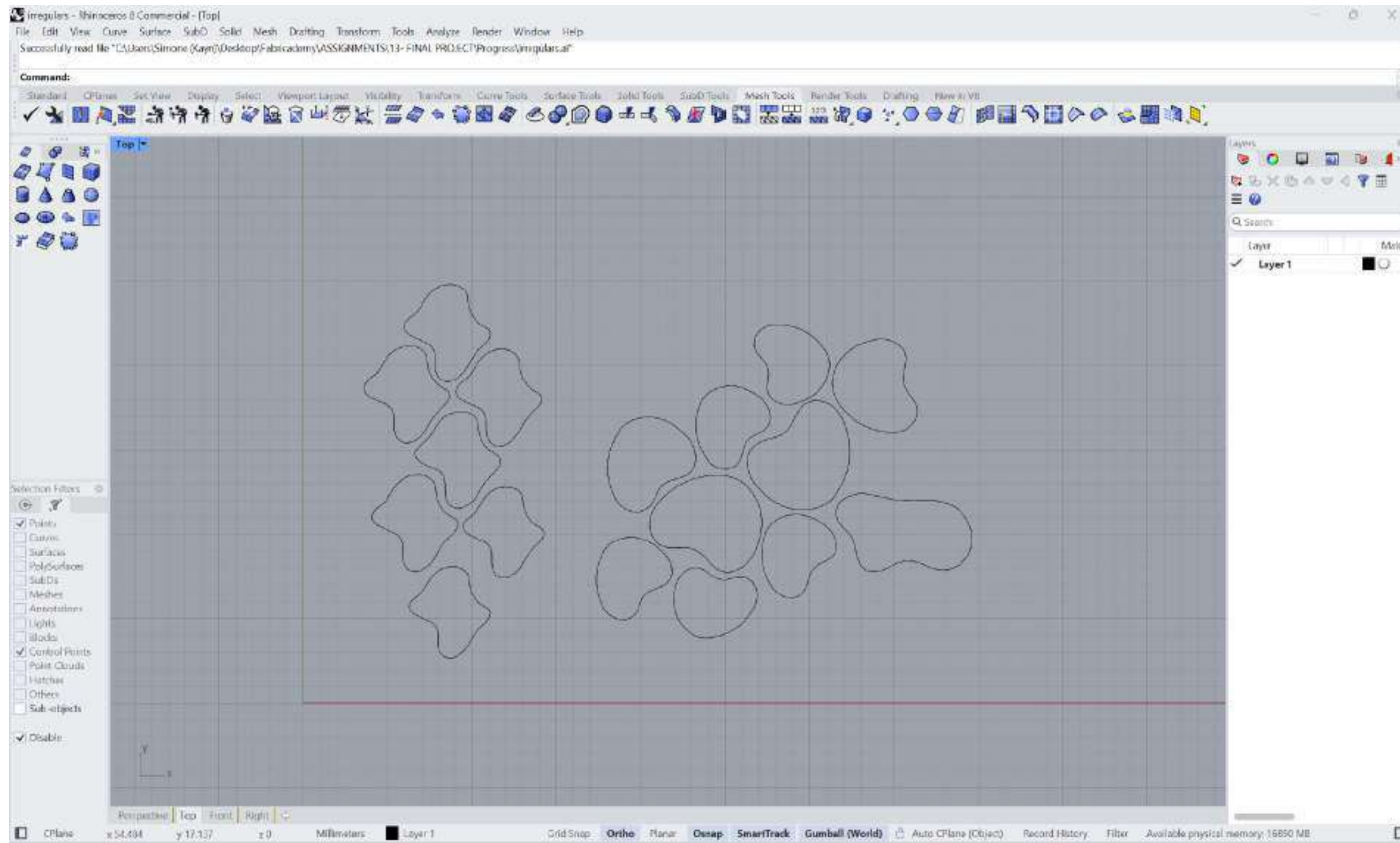


Clay elements geometry designed to evolve from initial use into coral reef.

Design Process (Collective)



Clay Modules Design



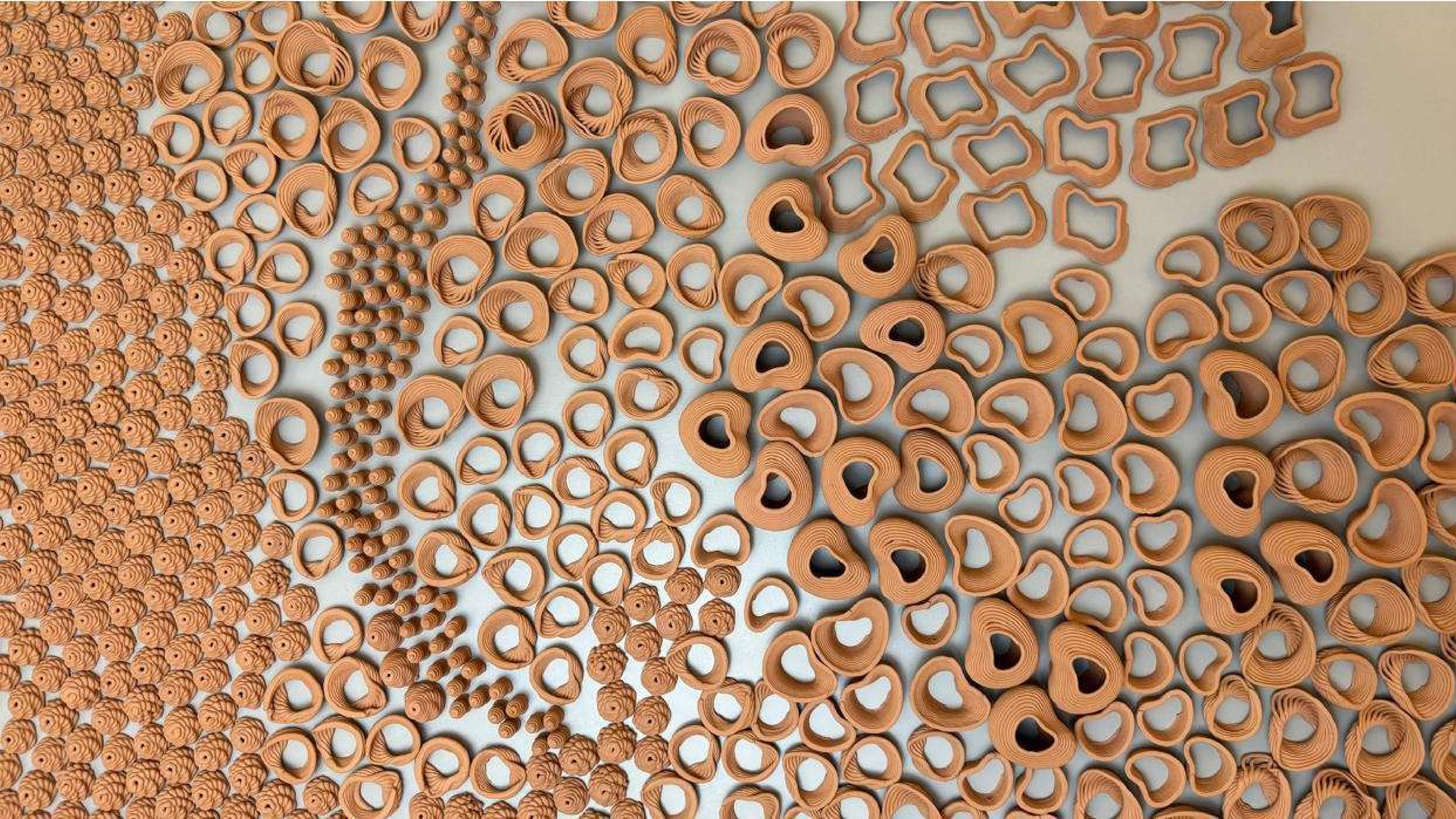
Investigating clay possibilities

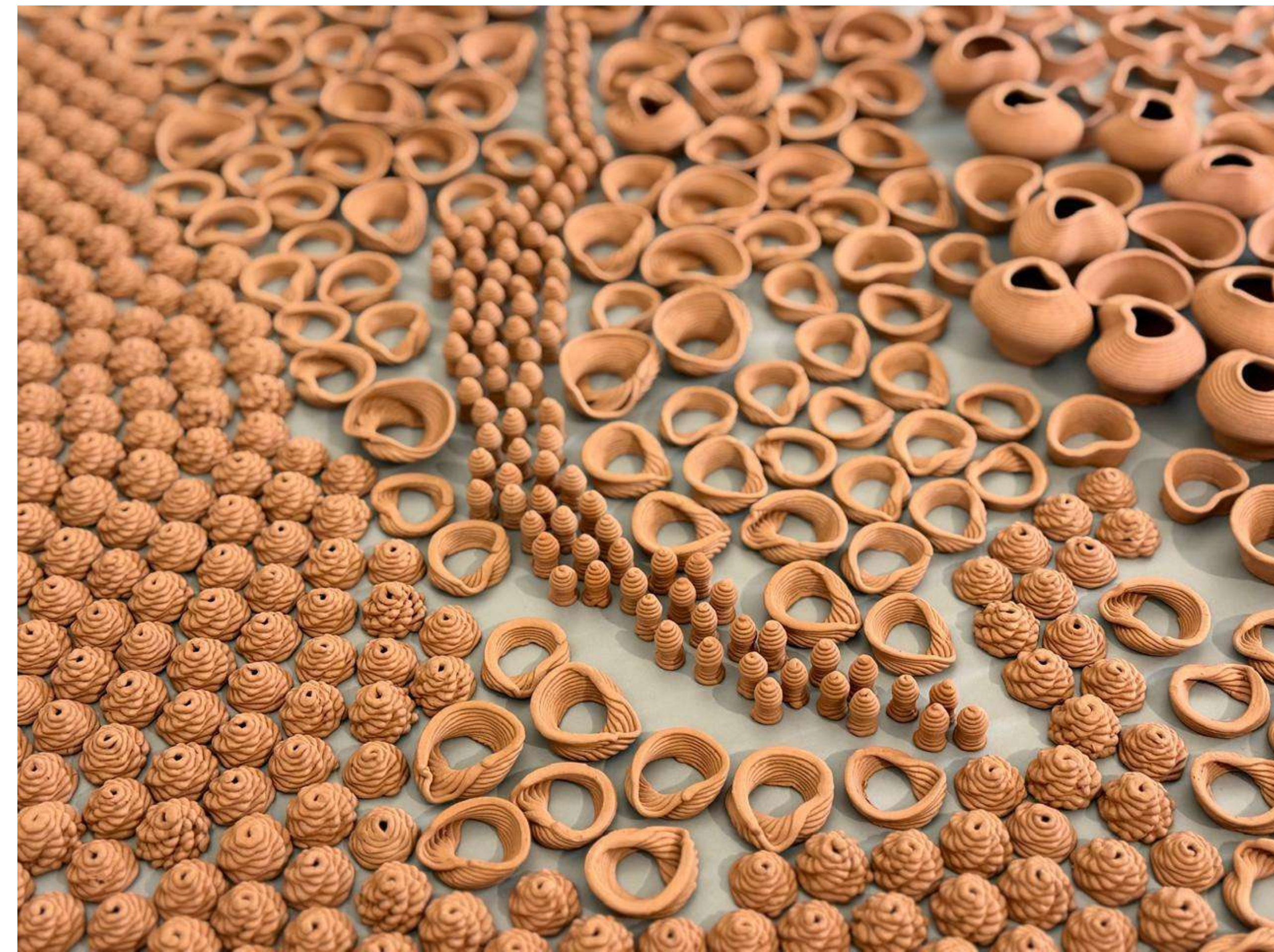


Clay 3D Printing Using Wasp 2040





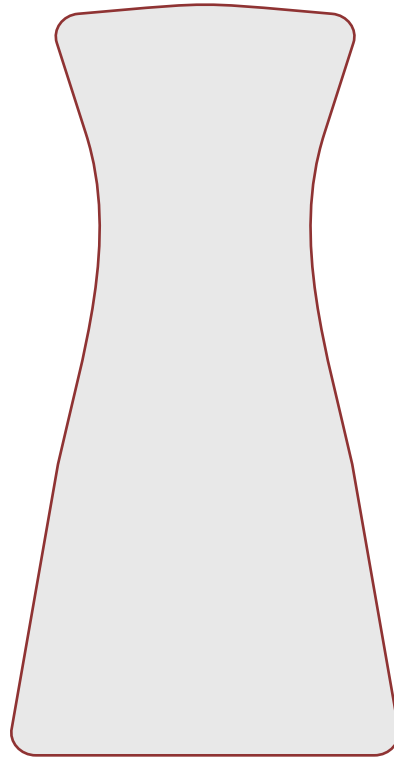




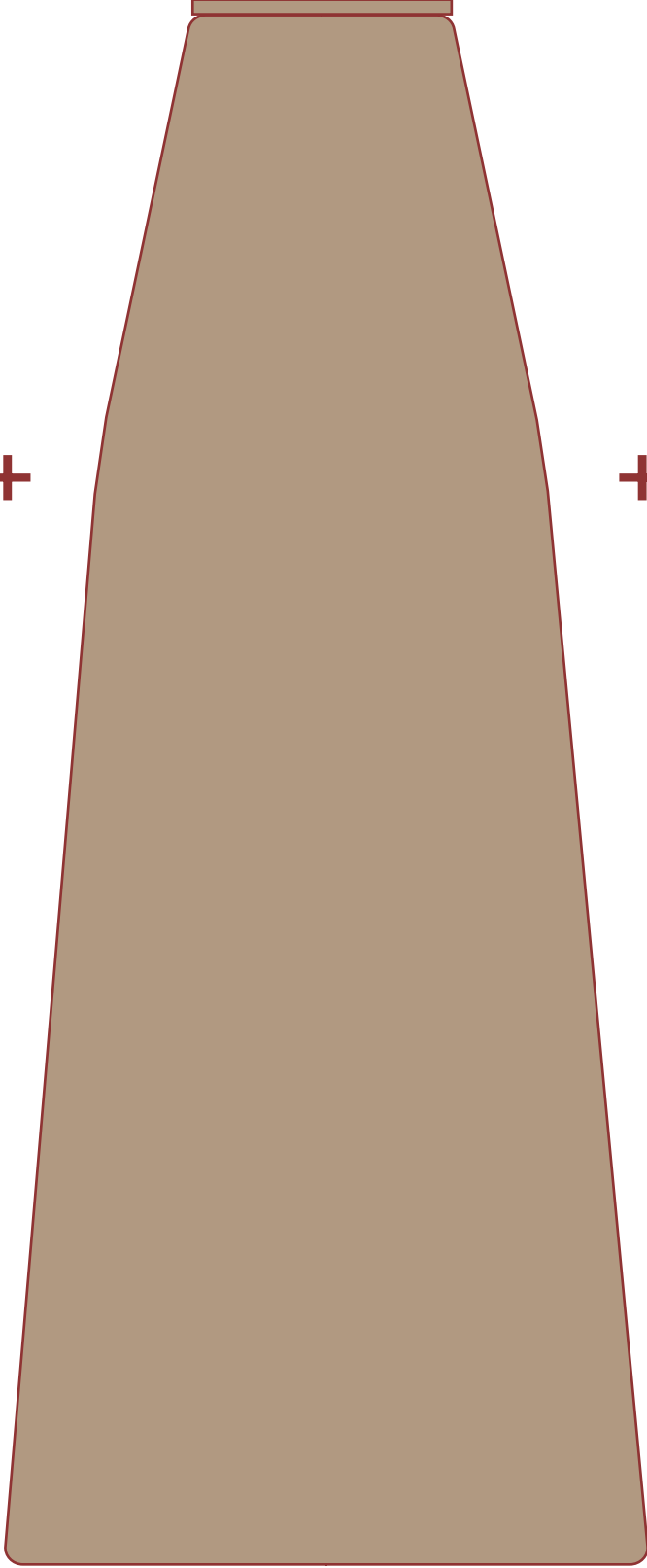
Investigating how distinct shapes establish a language, and how these languages can be woven together.

Garment Design

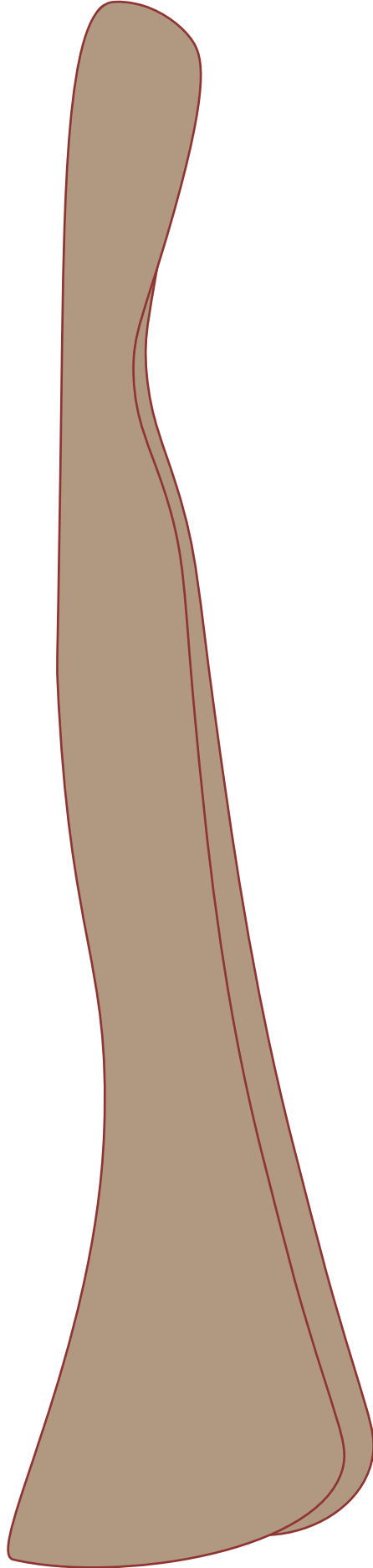
3 pieces



+

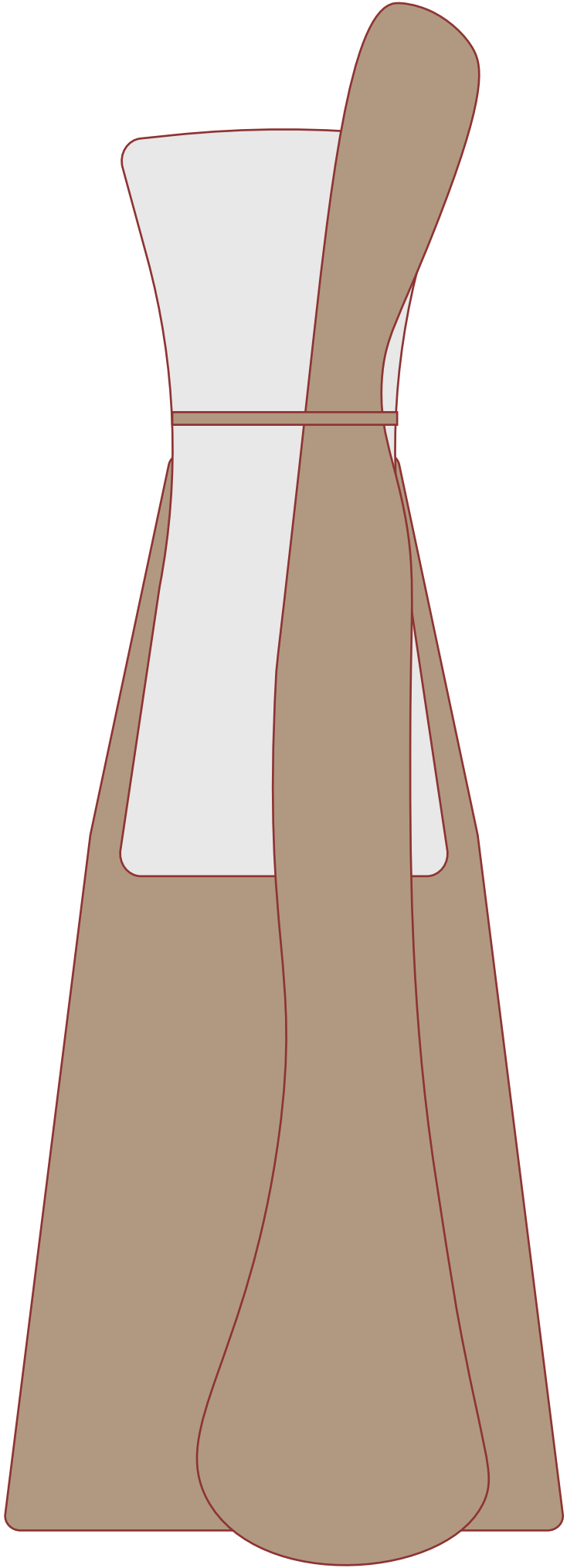


+



=

Assembly

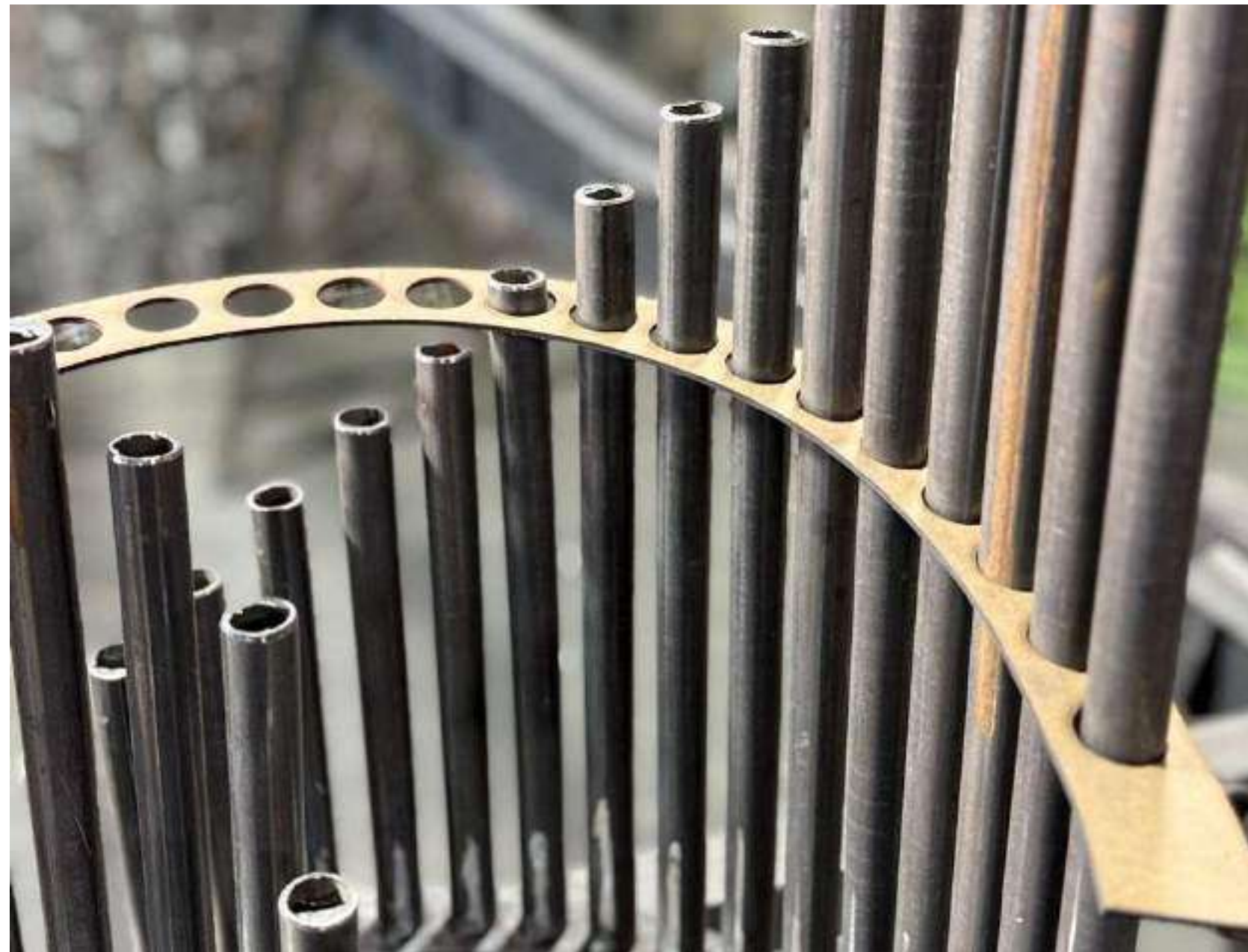
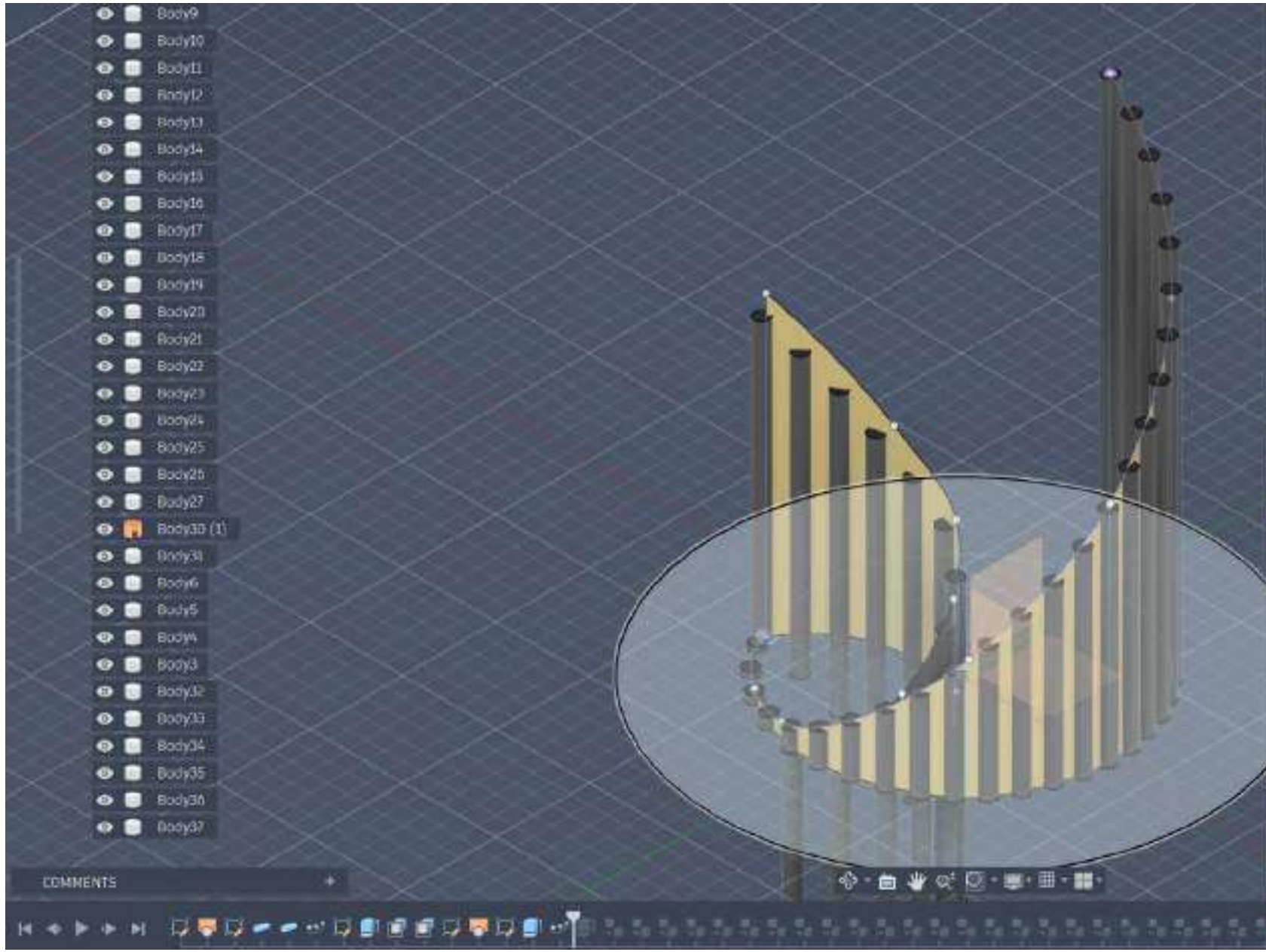




Accessories Design



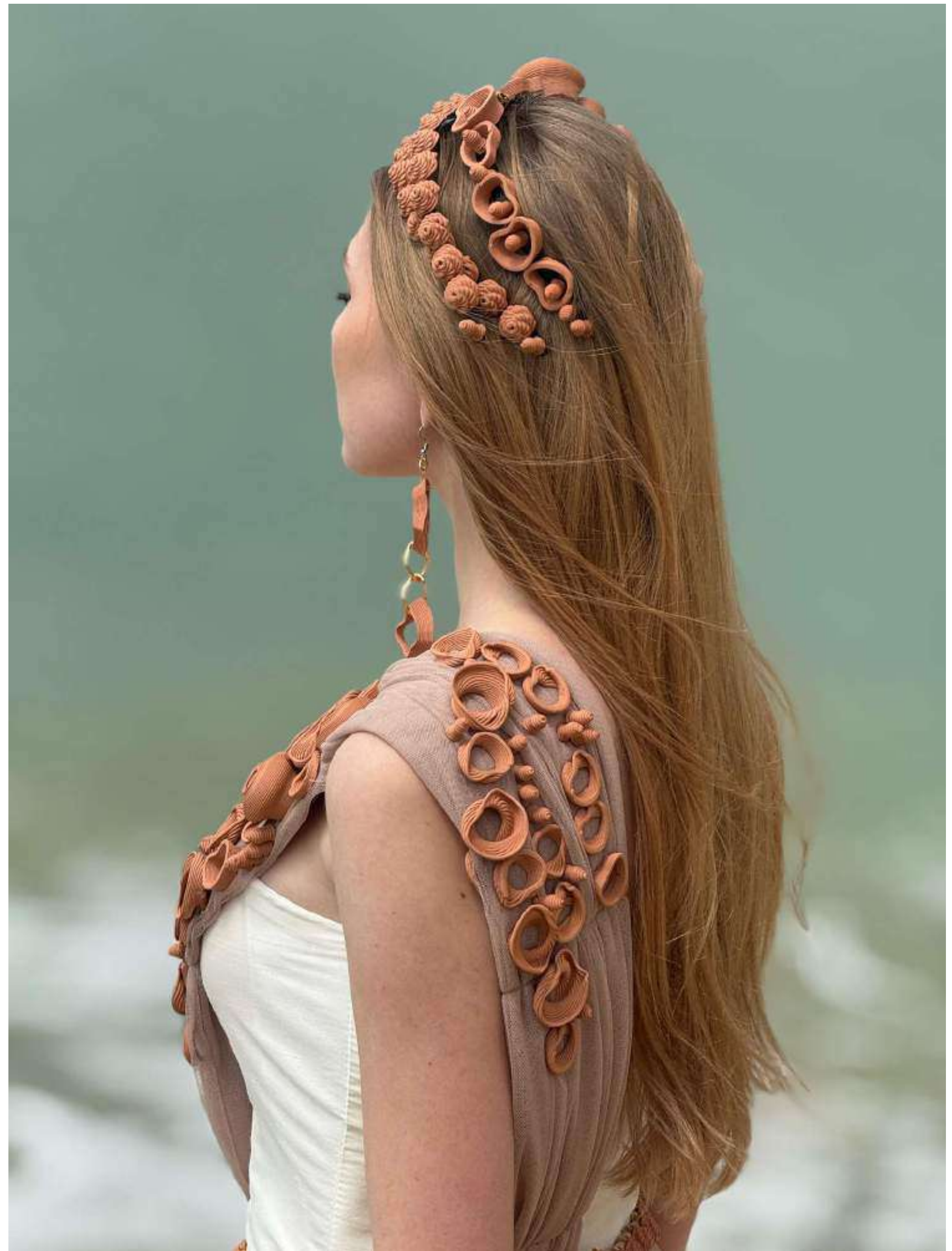
Steel Installation Design



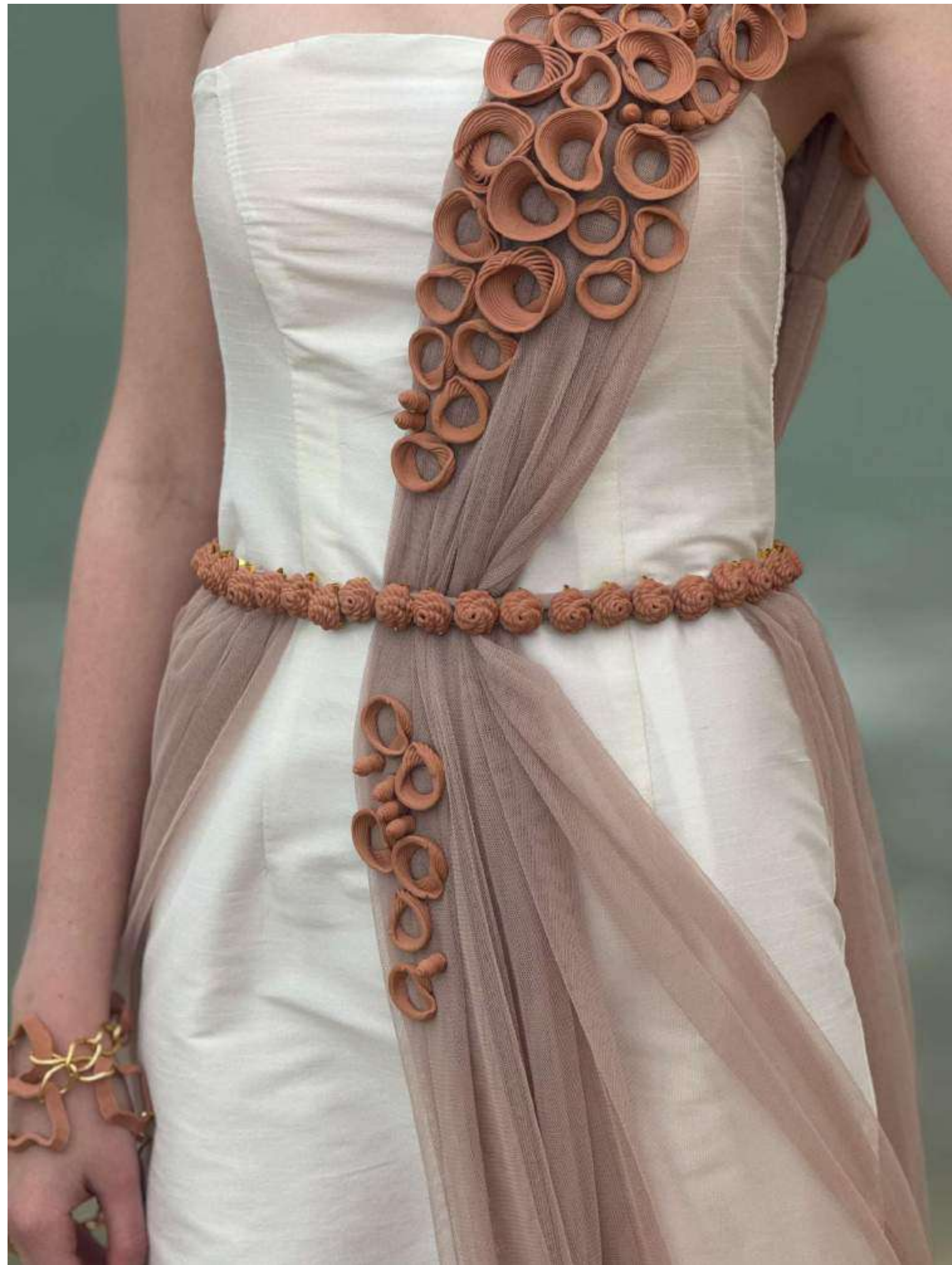
A woman with long, wavy brown hair is captured in a graceful, dynamic pose underwater. She is wearing a white, flowing dress with a lace-up back and a thin gold chain around her waist. Her arms are extended, and her body is arched, suggesting a dance or a fluid movement. The background is a soft, blueish-grey, creating a dreamlike atmosphere. The text "And it went like.." is centered over the image in a simple, brown font.

And it went like..









An underwater photograph of a vibrant coral reef. The scene is filled with various types of coral, including large, rounded, yellowish-brown structures and smaller, more intricate formations in shades of blue, purple, and red. Several dark-colored fish with yellow stripes are swimming around the coral. The water is clear and blue, with sunlight filtering down from the surface, creating a shimmering effect on the water's surface and illuminating the reef below.

Communal Practice

The Future?

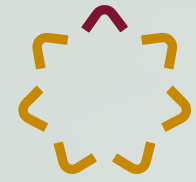
Commercial Approach

@zain zinc

 FABRICADEMY
textile and technology academy

A Program by | أمد برامج

مؤسسة ولي العهد
Crown Prince Foundation



مساحة الصناع
The Makerspace

